

RADIONIC EQUIPMENT RATE SHEETS

FOR

ACUPUNCTURE

2004 Edition

Published by: Bruce Copen Laboratories Ltd,
Unit 4, Lindfield Enterprise Park, Lindfield, West SusSex. RH16 2LX, UK.

Tel; ++44 (0)1444 487900

Fax; ++44 (0)1444 483555

[E-Mail; salesbrucecopen@aol.com](mailto:salesbrucecopen@aol.com)

All rights reserved. No part of this document may be reproduced, stored in a retrieval system, or transmitted in any form or by any means, electronic, mechanical, photocopying, recording or otherwise, without the prior written permission of Bruce Copen Laboratories Ltd.

RADIONIC EQUIPMENT RATE SHEETS

FOR

ACUPUNCTURE

2004 Edition

Published by: Bruce Copen Laboratories Ltd,
Unit 4, Lindfield Enterprise Park, Lindfield, West SusSex. RH16 2LX, UK.

Tel; ++44 (0)1444 487900

Fax; ++44 (0)1444 483555

[E-Mail; salesbrucecopen@aol.com](mailto:salesbrucecopen@aol.com)

All rights reserved. No part of this document may be reproduced, stored in a retrieval system, or transmitted in any form or by any means, electronic, mechanical, photocopying, recording or otherwise, without the prior written permission of Bruce Copen Laboratories Ltd.

ACUPUNCTURE

NOTES FOR USERS OF BRUCE COPEN LABORATORIES EQUIPMENT

This book of special rates has been prepared after a number of years of research with the assistance of Practitioners who use Copen Laboratories equipment - the result is the publication of this rates list by which you may use the rates for Analysis and Treatment. The rates can also be used for manufacturing Homoeopathic type medicines.

This book is illustrated with line drawings to indicate to the new Practitioner the correct location of the various points. It is important that in reading these rates that the whole number is read as one rate sequence, **IGNORING** the decimal point that appears to split the rate. The reason for the decimal point is separate the point rate from the location rate. For Example; the rate for location **G33** reads as **77210 . 09** in actual practice the rate number to be used is **7721009**. This is commonly known as a localisation rate.

The rates listed here may be used for Radionic analysis on any of the equipment produced by Bruce Copen Laboratories. The rates can also be programmed onto the EECS cards system (Electronic Encoding Card System), thus offering a vast guide to diagnostic procedures, or for the actual manufacture of Homoeopathic medicines in any potency.

These listed rates have been long sought after by those interested in the subject, we trust that they are of great use to you in the years to come. If you find that a particular rate you are after is not listed please contact one of our offices and we will endeavour to research and produce the required rate for you. If you are in possession of rates that you feel would be of interest to others and that they should be listed then please contact our offices and we would be happy to include them in the next edition.

PLEASE NOTE; The rates listed in this book can **ONLY** be used on Copen Laboratories equipment. Copen Laboratories hold no responsibility for usage on other types of equipment.

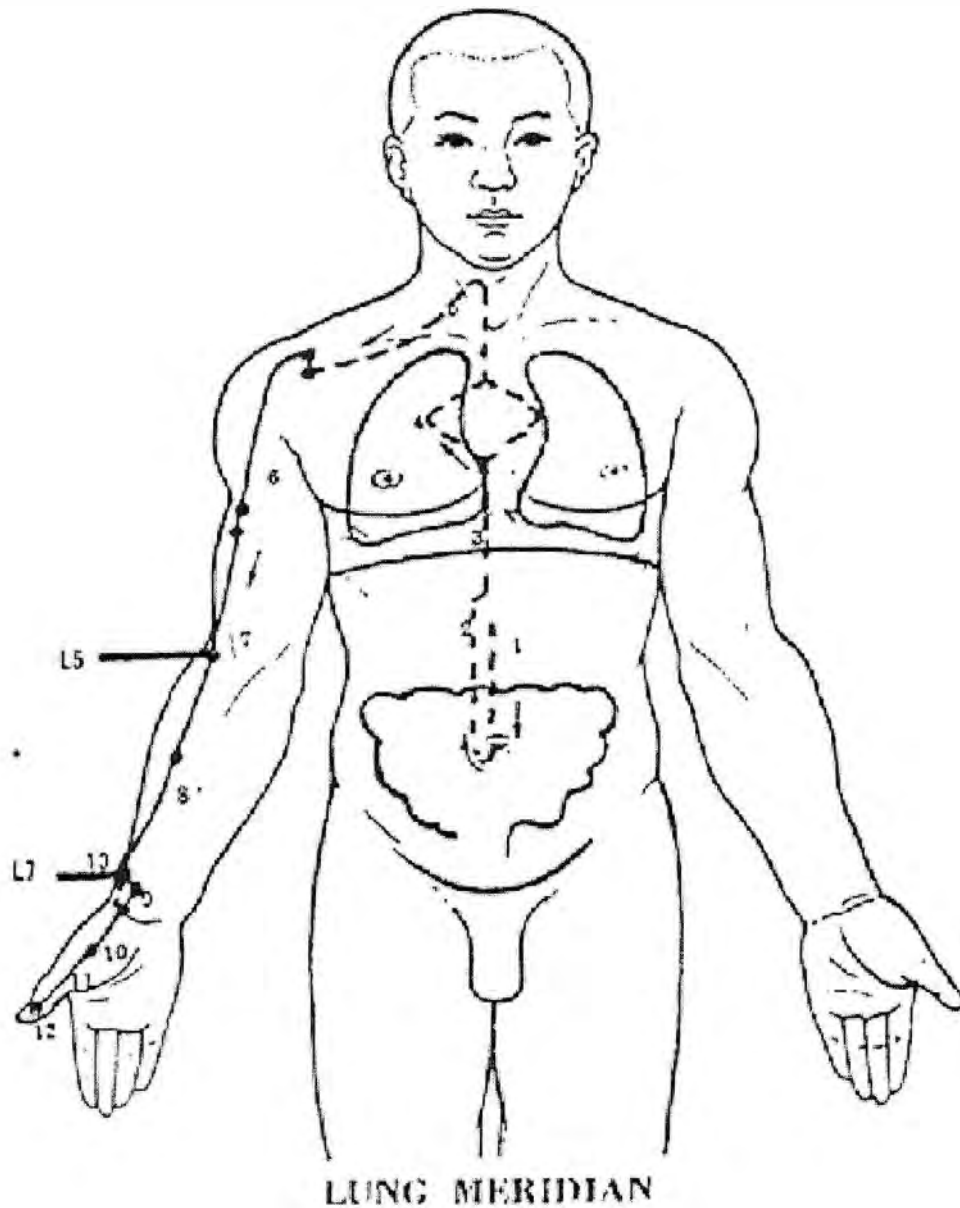
INDEX

	Page / s
MAIN MERIDIAN POINTS	4
Lungs	4
Large Intestine	5, 6
Stomach	7, 8, 9
Spleen	10, 11
Heart	12
Small Intestine	13, 14
Bladder	15, 16, 17
Kidney	18, 19
Circulation - Sex	20
Triple Warmer	21, 22
Gall Bladder	23, 24
Liver	25, 26
VESSEL POINTS	27
Conception	27, 28
Governing	29, 30
NON-MERIDIAN POINTS	31
Non-Meridian Points	31
NEW POINTS	32
New Points	32
Point of Tonification	32
Points of Sedation	33
The Source	33
Alarm Points	34
Associated Points	34
"Lo" Points (Coupled meridians)	35
Points of Entry	36
Points of Exit	36
The Five Elements (Yin Meridians)	37
The Five Elements (Yang Meridians)	38
Specialised Points	39
Illustrated Points	44 to 49
OUR CONTACT DETAILS	50

MAIN MERIDIAN POINTS

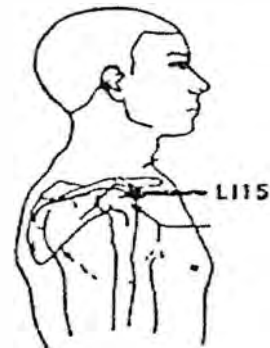
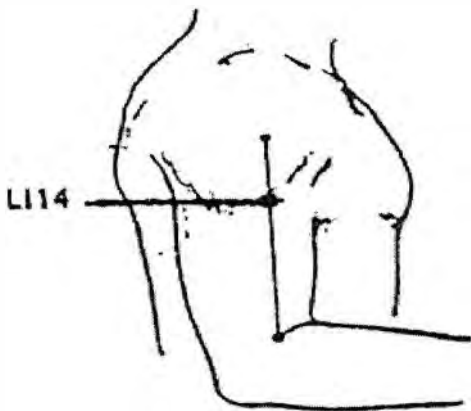
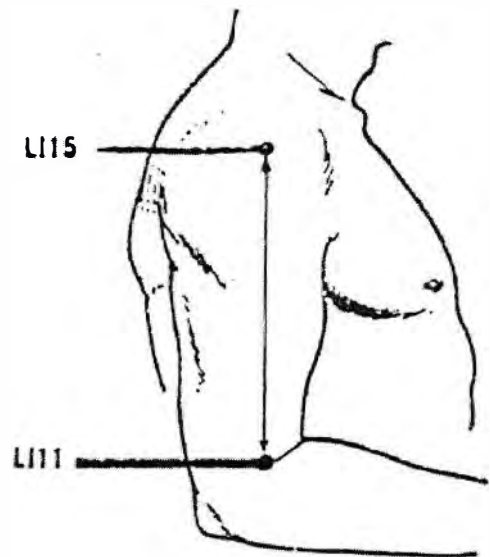
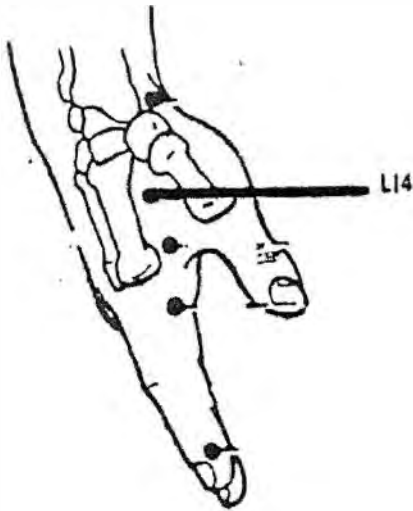
LUNGS

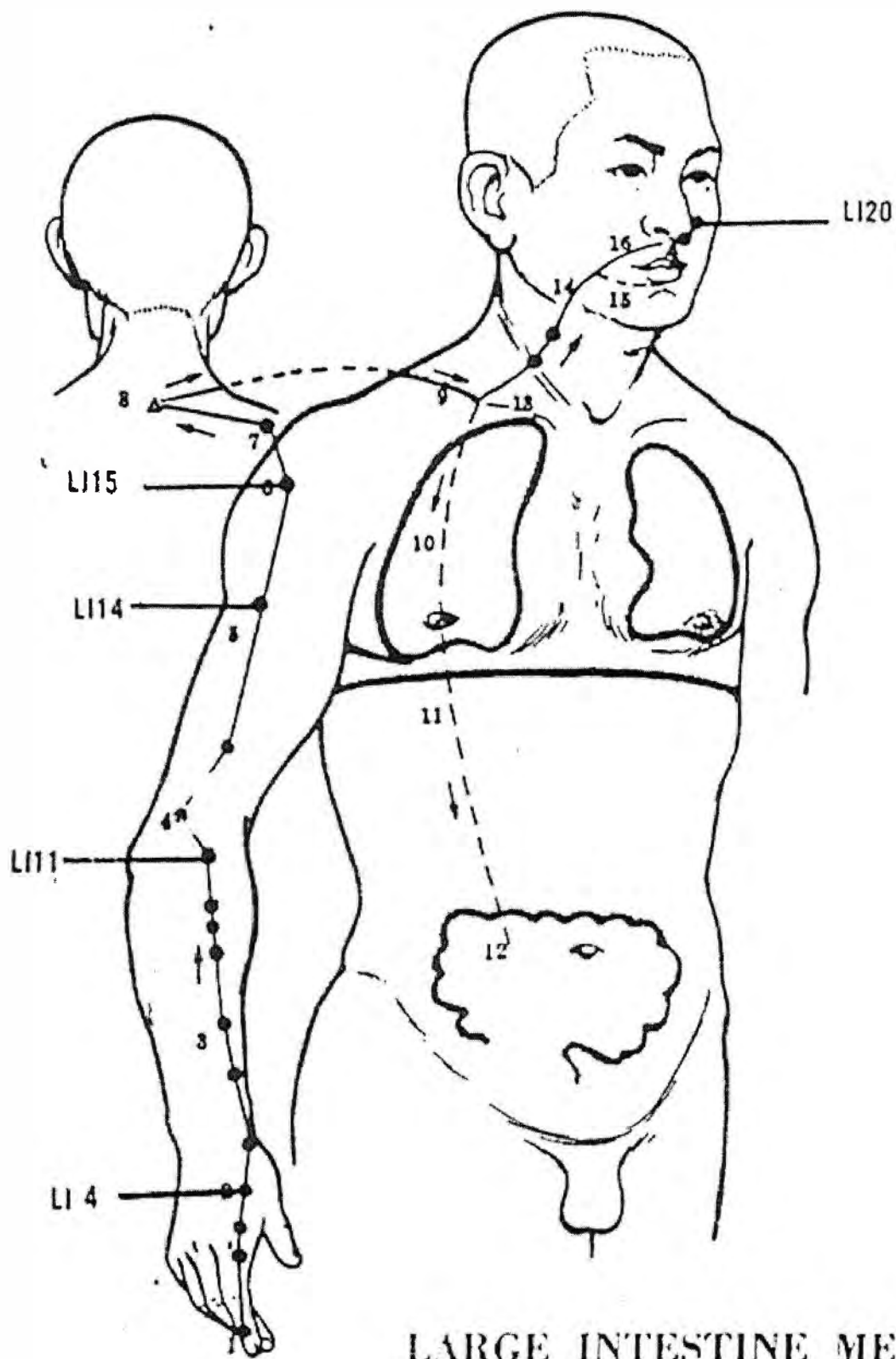
Lungs, main meridian	5555376
L 1	55610 . 96
L 2	552578
L 3	556381
L 4	552685
L 5	5510 . 451
L 6	550284
L 7	557784
L 8	554989
L 9	556564
L 10	556797
L 11	557971



LARGE INTESTINE

Large Intestine, main meridian	8898636
Li 1	88477
Li 2	886582
Li 3	884555
Li 4	88310 . 82
Li 5	882333
Li 6	886458
Li 7	883506
Li 8	885684
Li 9	88610 . 04
Li 10	886706
Li 11	8810 . 676
Li 12	8810 . 925
Li 13	886011
Li 14	887710 . 7
Li 15	888735
Li 16	888005
Li 17	887536
Li 18	887535
Li 19	886835
Li 20	886604





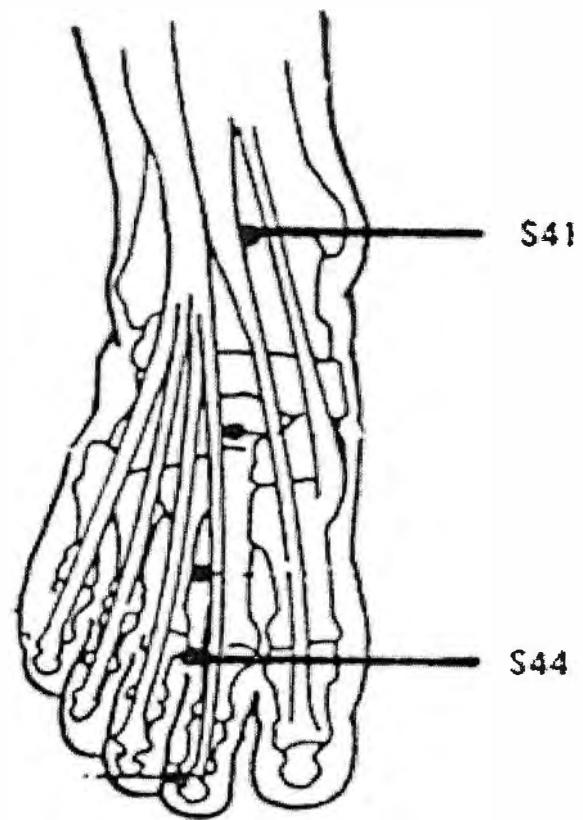
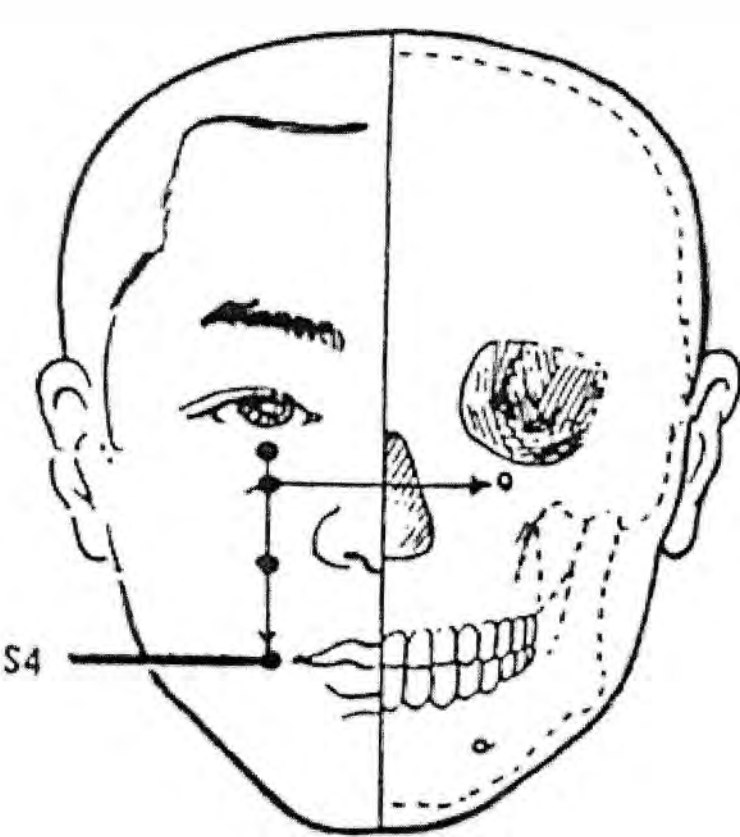
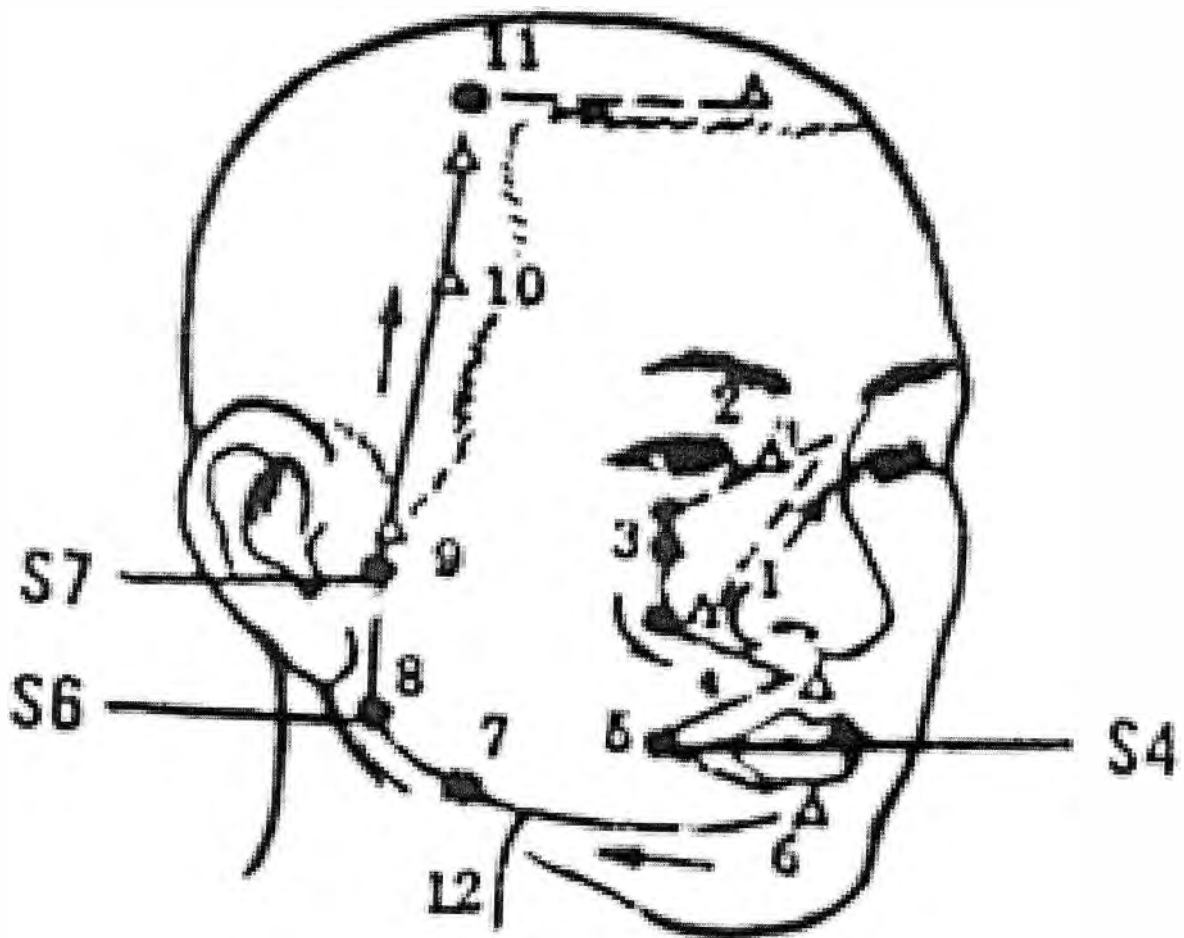
LARGE INTESTINE MERIDIAN

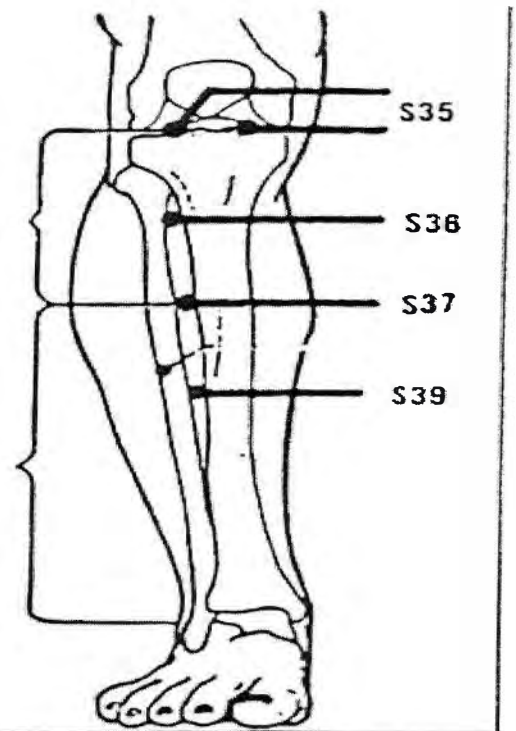
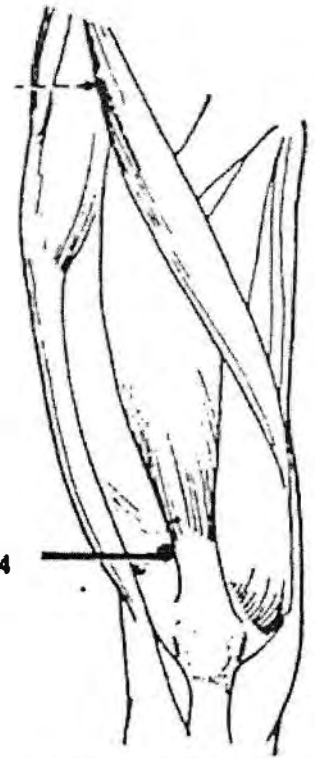
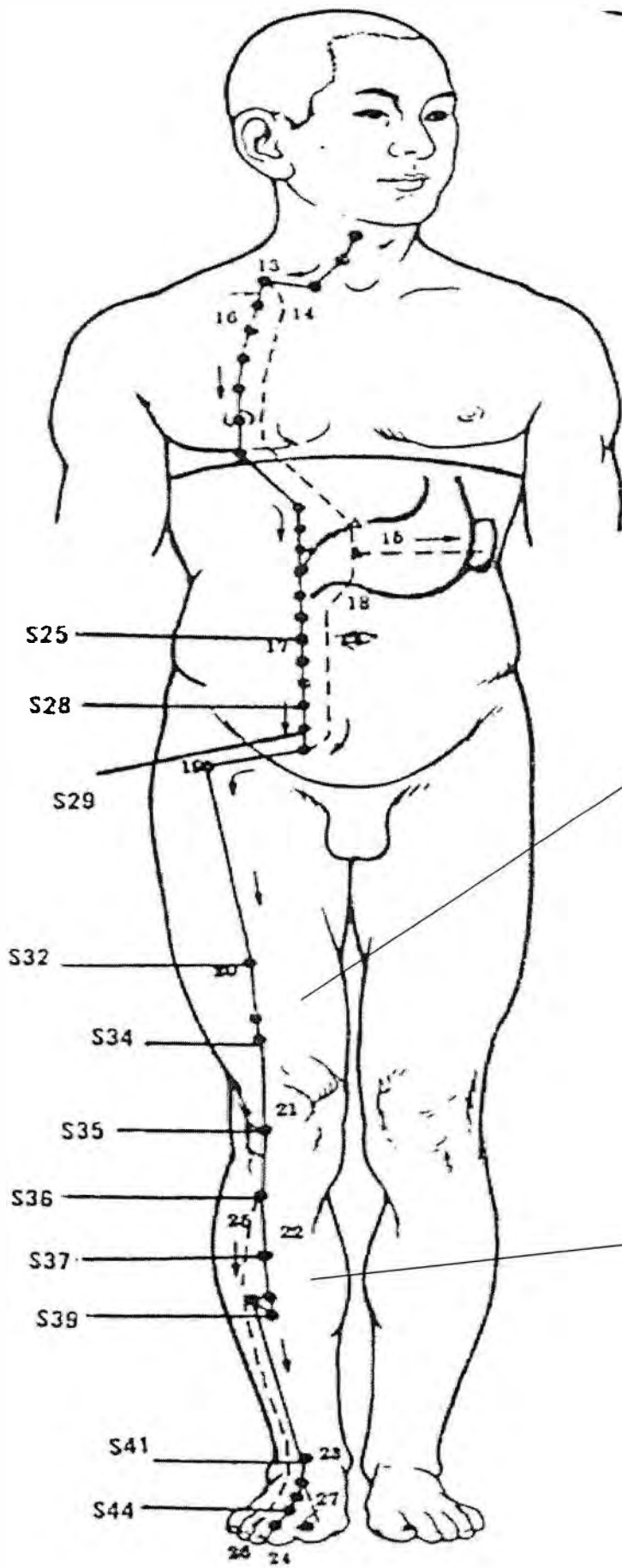
STOMACH

Stomach, main meridian

2263042

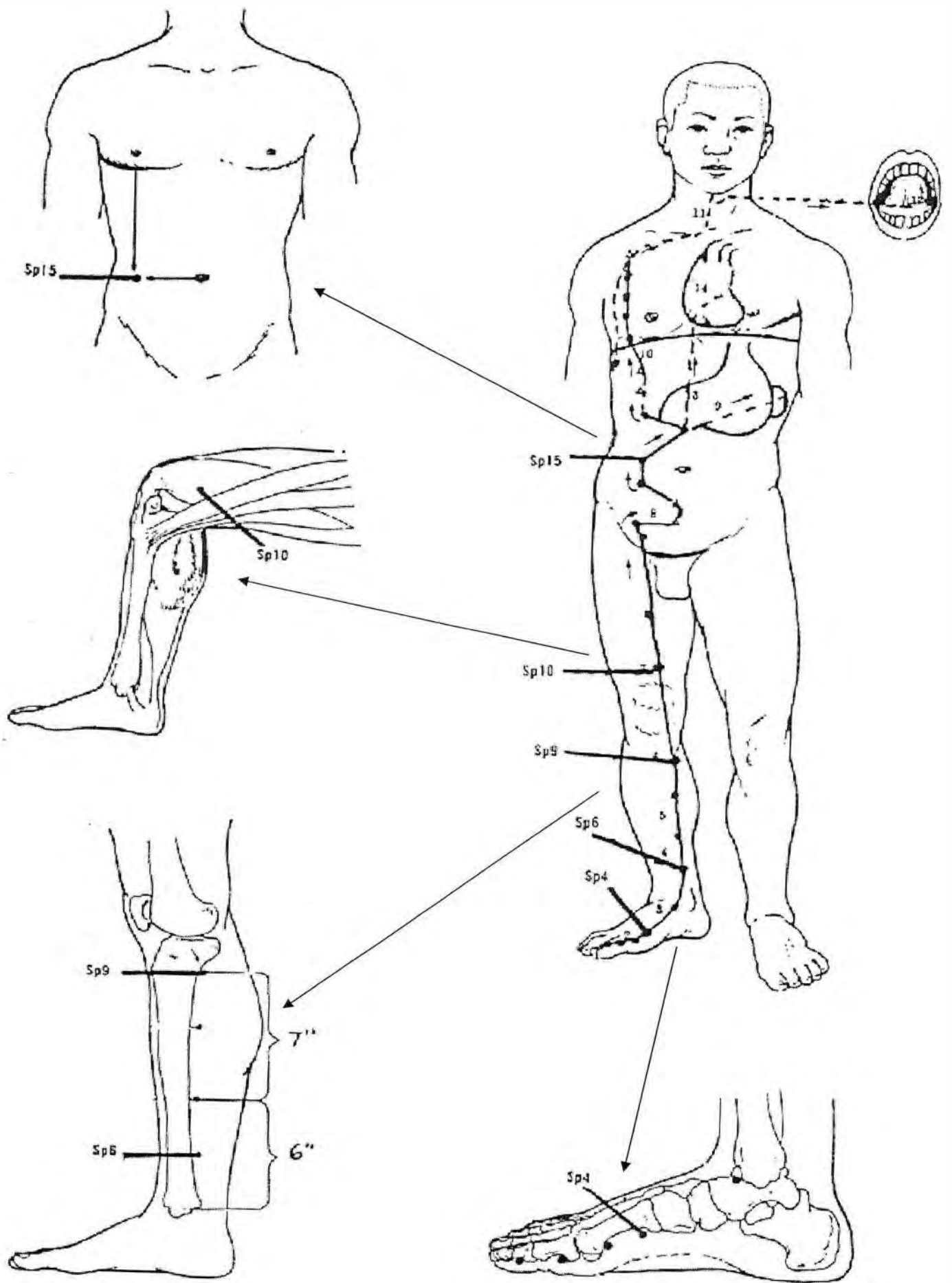
S 1	228845
S 2	22710 . 54
S 3	227233
S 4	225657
S 5	22710 . 24
S 6	227897
S 7	2210 . 687
S 8	225682
S 9	225652
S 10	226982
S 11	227603
S 12	226762
S 13	226792
S 14	227655
S 15	22510 . 52
S 16	225208
S 17	226909
S 18	2252310
S 19	227573
S 20	2288610
S 21	227864
S 22	226868
S 23	225525
S 24	223006
S 25	2210 . 486
S 26	226675
S 27	228999
S 28	225635
S 29	2277810
S 30	228893
S 31	227004
S 32	225664
S 33	226025
S 34	225710 . 7
S 35	227443
S 36	226506
S 37	22710 . 65
S 38	22010 . 98
S 39	22510 . 87
S 40	229964
S 41	22610 . 32
S 42	22610 . 10 . 3
S 43	226044
S 44	226499
S 45	2210 . 846





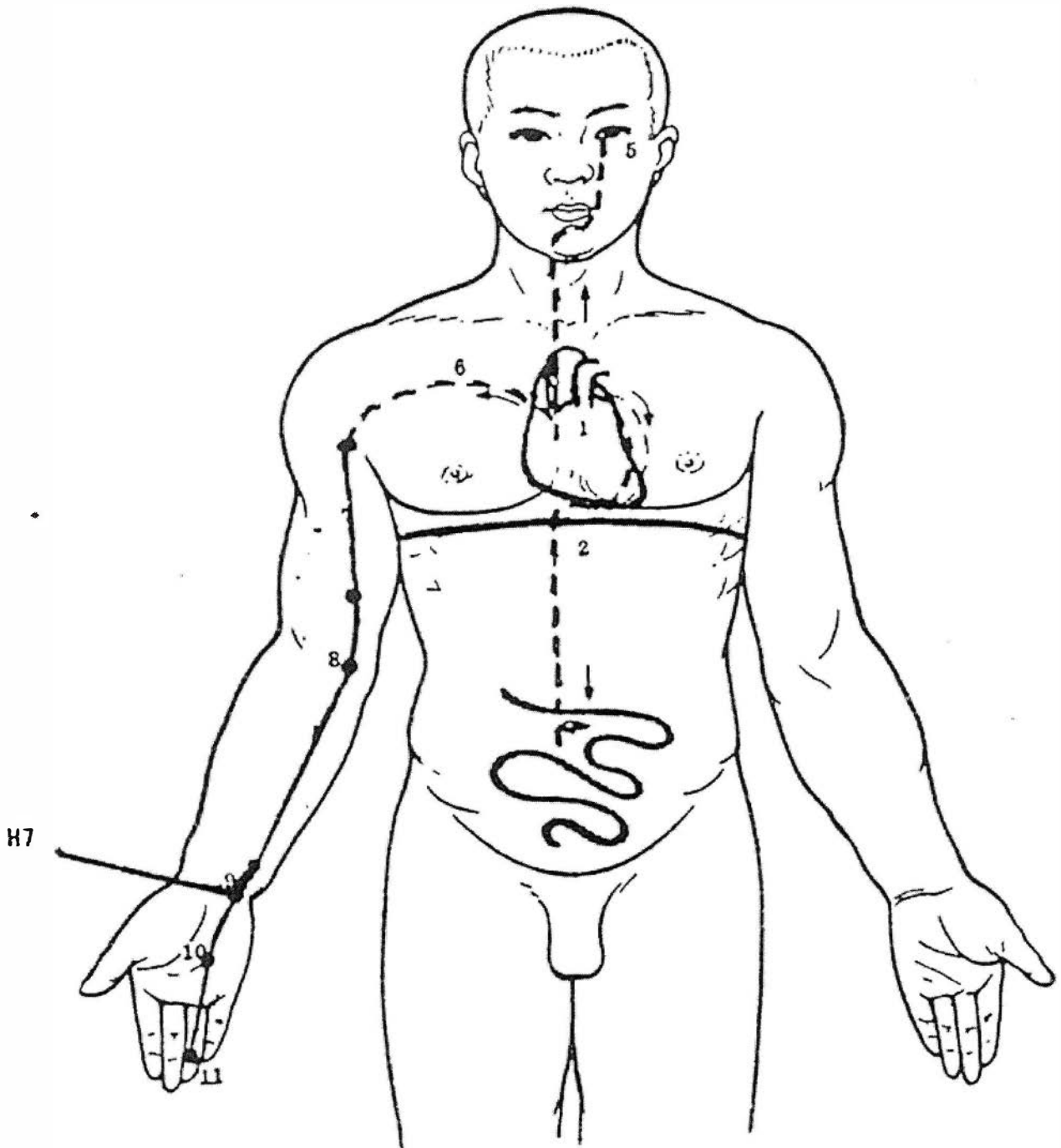
SPLEEN

Spleen, main meridian	686686
Sp 1	669655
Sp 2	557437
Sp 3	3362010
Sp 4	447891
Sp 5	5510 . 064
Sp 6	776202
Sp 7	335653
Sp 8	3366810
Sp 9	334347
Sp 10	88910 . 57
Sp 11	10 . 10 . 6066
Sp 12	448886
Sp 13	886223
Sp 14	998768
Sp 15	554258
Sp 16	993710 . 6
Sp 17	557878
Sp 18	225589
Sp 19	777741
Sp 20	002410 . 5
Sp 21	4446610



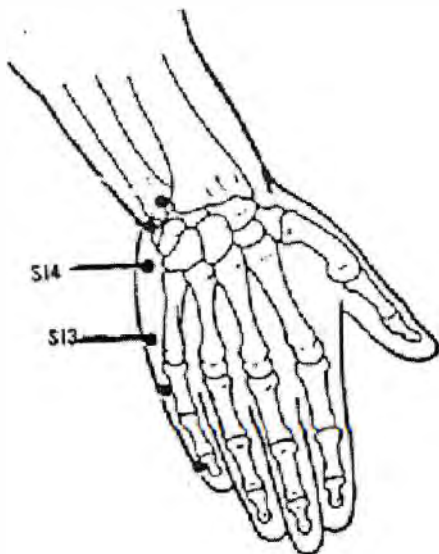
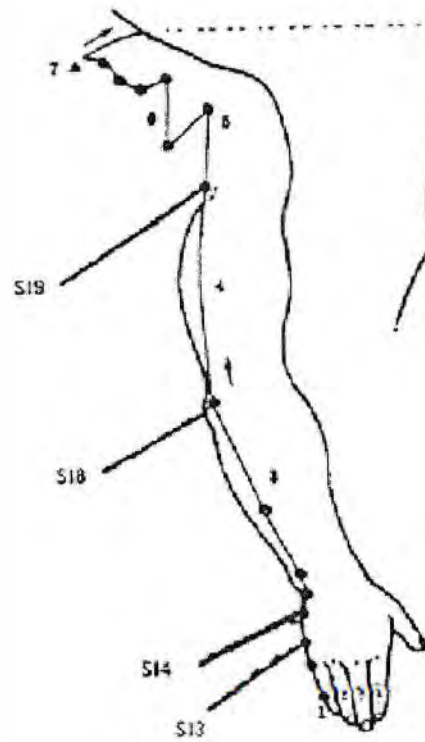
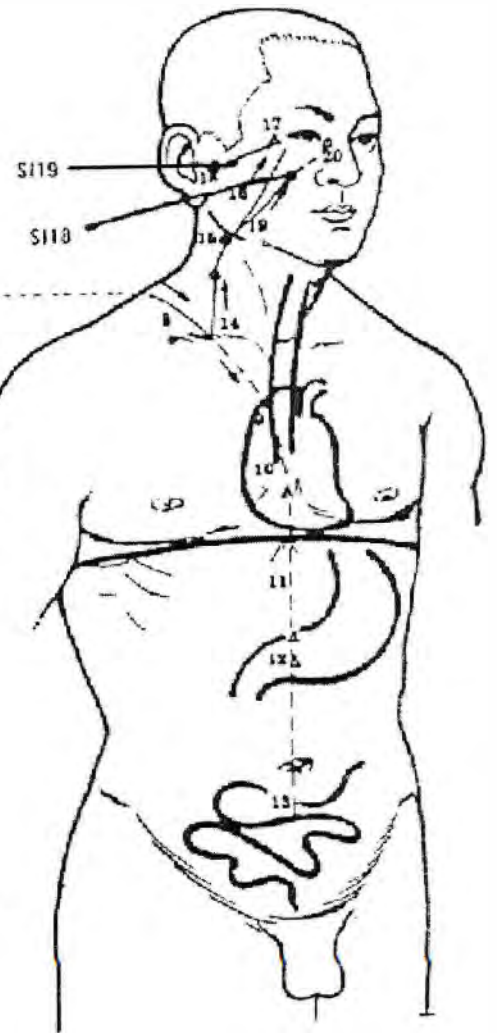
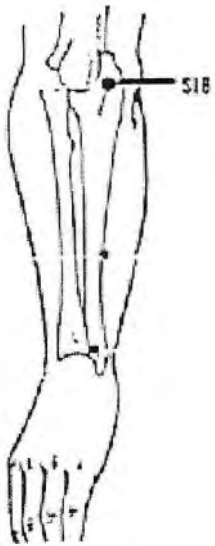
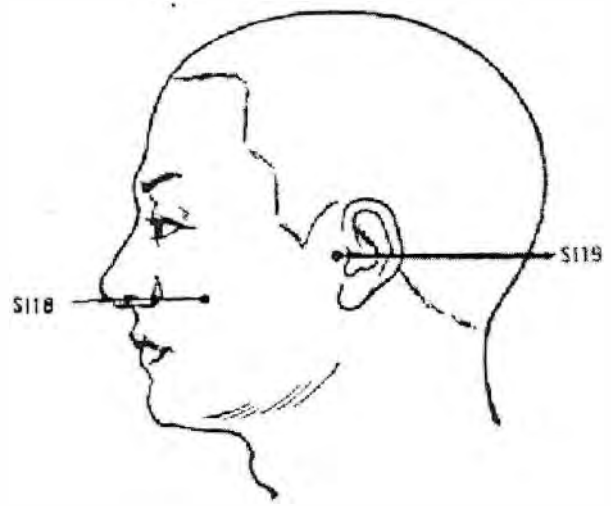
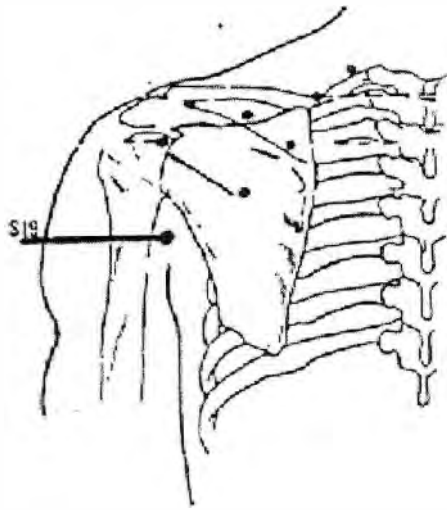
HEART

Heart, main meridian	3345234
H 1	335683
H 2	335784
H 3	337676
H 4	336364
H 5	335446
H 6	33510 . 77
H 7	3375810
H 8	335644
H 9	335217



SMALL INTESTINE

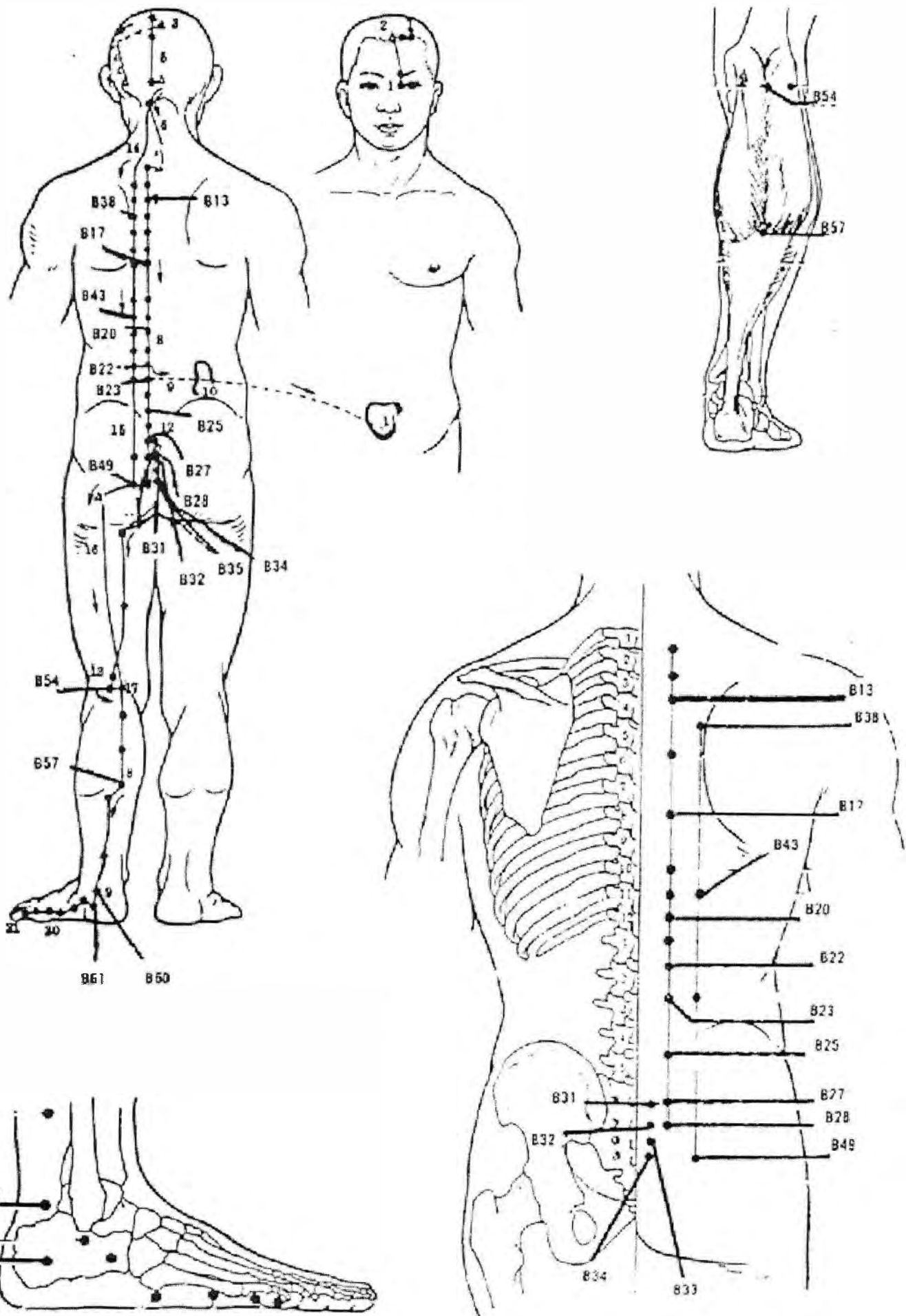
Small Intestine, main meridian	3301
Si 1	310 . 67
Si 2	57410
Si 3	510 . 35
Si 4	6210 . 3
Si 5	5476
Si 6	9865
Si 7	3322
Si 8	610 . 24
Si 9	4669
Si 10	9326
Si 11	710 . 94
Si 12	4102
Si 13	5134
Si 14	4955
Si 15	76710
Si 16	5525
Si 17	5233
Si 18	4202
Si 19	6445



BLADDER

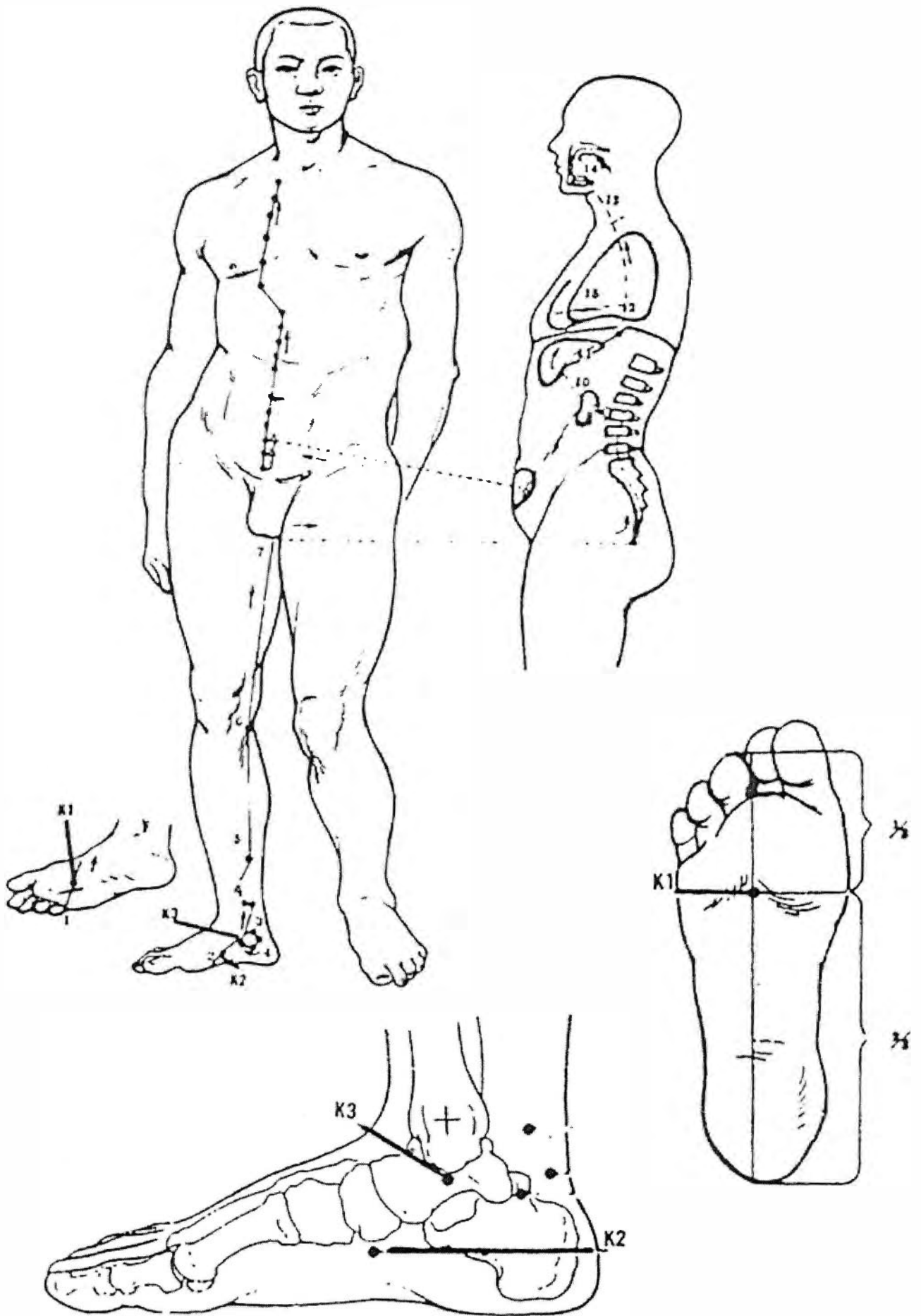
Bladder, main meridian	4444677
B 1	447842
B 2	446652
B 3	445221
B 4	442341
B 5	445138
B 6	447535
B 7	445352
B 8	448994
B 9	445364
B 10	444343
B 11	44510 . 32
B 12	448663
B 13	446754
B 14	445254
B 15	445810 . 5
B 16	447845
B 17	447948
B 18	445798
B 19	44610 . 91
B 20	449662
B 21	44510 . 68
B 22	445424
B 23	447698
B 24	448788
B 25	446546
B 26	444333
B 27	445322
B 28	446551
B 29	440048
B 30	4485510
B 31	446822
B 32	446025
B 33	447696
B 34	440510 . 5
B 35	446887
B 36	443462
B 37	448644
B 38	447405
B 39	445612
B 40	443553
B 41	444411
B 42	445664
B 43	4410 . 10 . 87
B 44	447355
B 45	444328
B 46	447643

B 47	443431
B 48	447745
B 49	445621
B 50	445063
B 51	441010 . 62
B 52	447698
B 53	444511
B 54	443002
B 55	44610 . 52
B 56	44710 . 66
B 57	445559
B 58	446910 . 2
B 59	44610 . 64
B 60	445577
B 61	446105
B 62	44910 . 52
B 63	443351
B 64	445097
B 65	445151
B 66	440068
B 67	447389



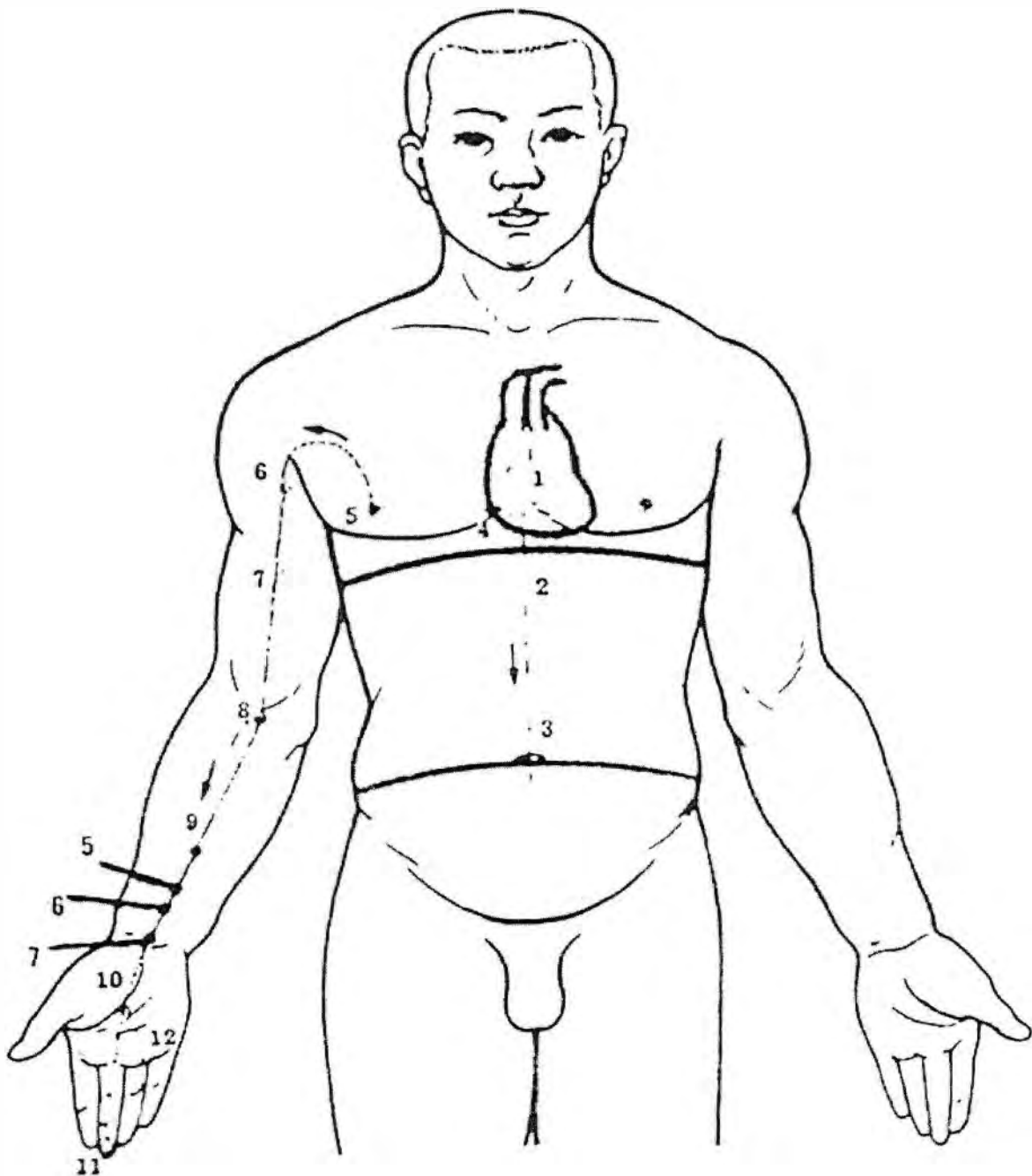
KIDNEY

Kidney, main meridian	1144223
K 1	111038
K 2	113645
K 3	113704
K 4	113104
K 5	1110 . 545
K 6	116542
K 7	115610 . 4
K 8	115142
K 9	115585
K 10	113746
K 11	116554
K 12	117558
K 13	110366
K 14	118599
K 15	114775
K 16	114969
K 17	117914
K 18	11710 . 32
K 19	115306
K 20	116988
K 21	116588
K 22	115273
K 23	110966
K 24	115310 . 5
K 25	110910 . 3
K 26	115936
K 27	116845



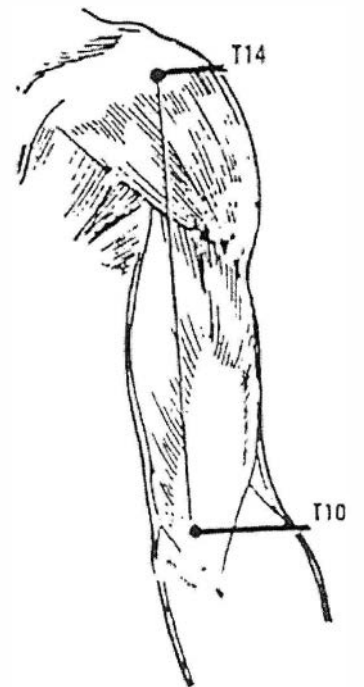
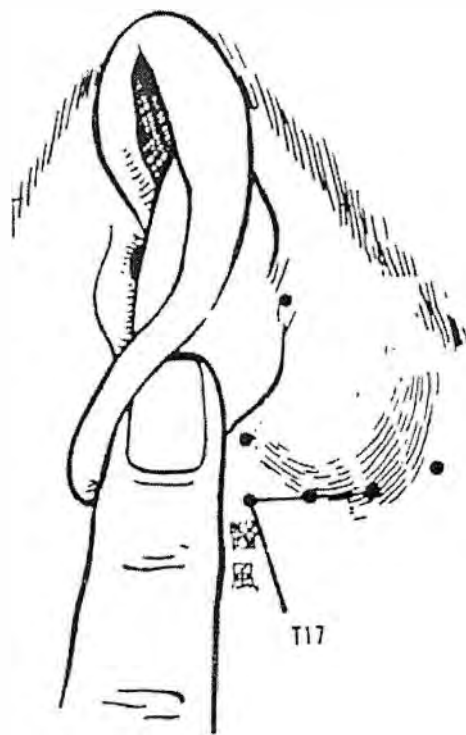
CIRCULATION-SEX

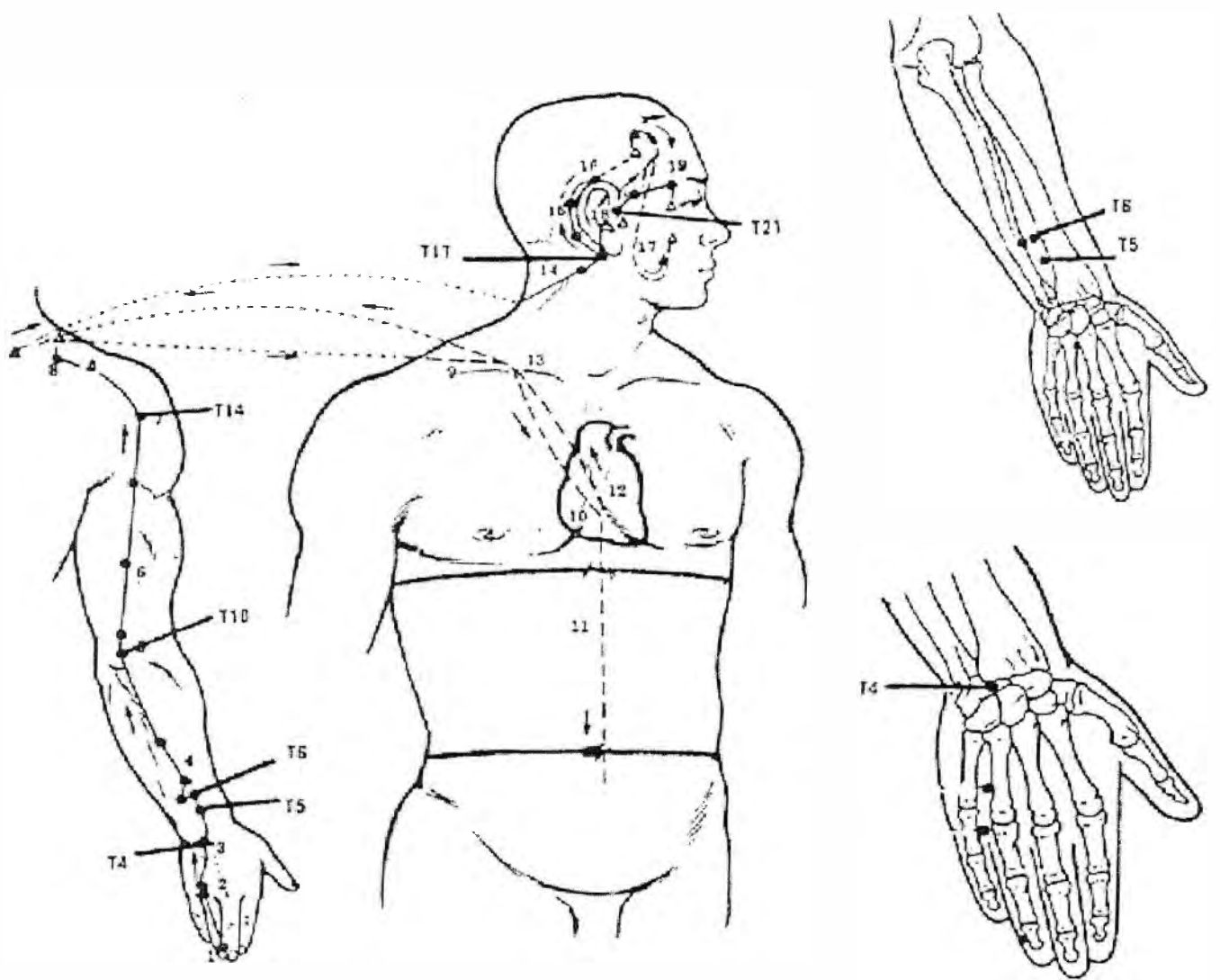
Circulation - Sex, main meridian	9990097
Cx 1	997769
Cx 2	996655
Cx 3	997466
Cx 4	9967610
Cx 5	995664
Cx 6	997835
Cx 7	996710 . 2
Cx 8	996835
Cx 9	995844



TRIPLE WARMER

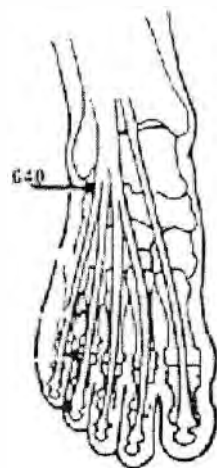
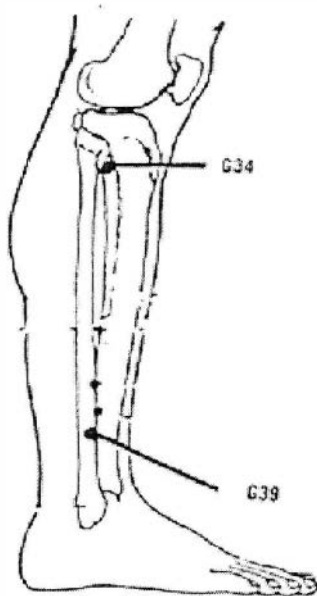
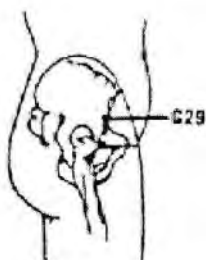
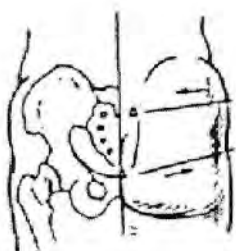
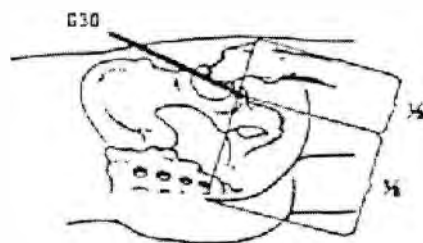
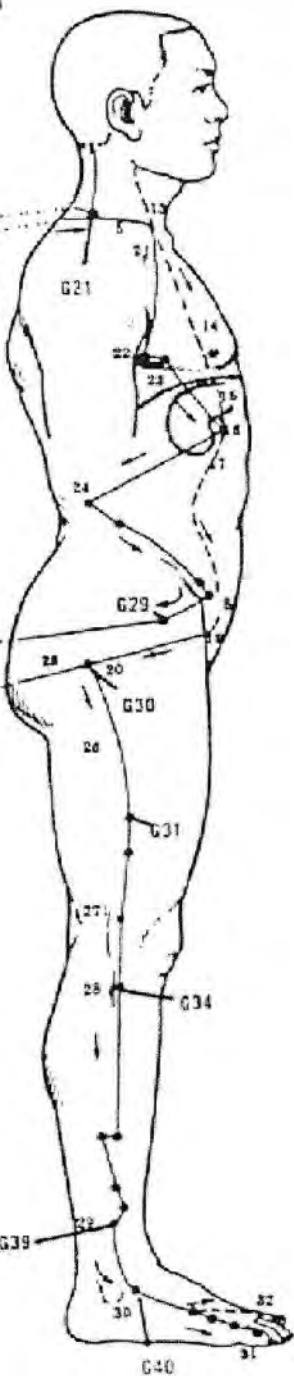
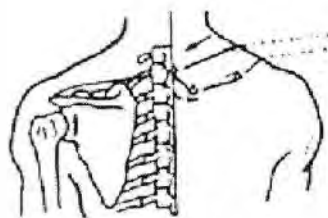
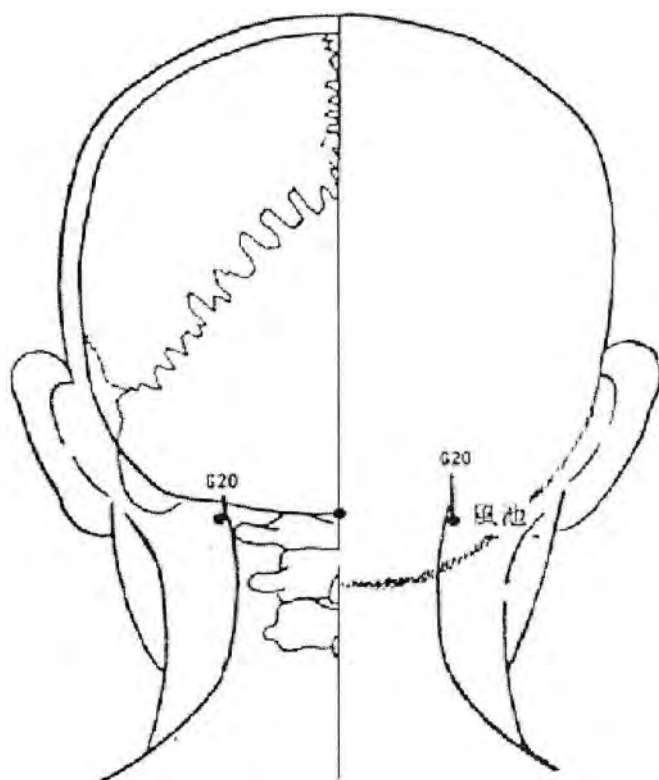
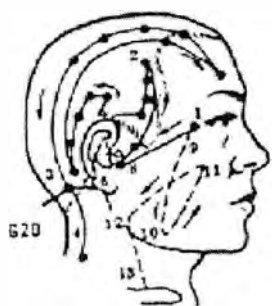
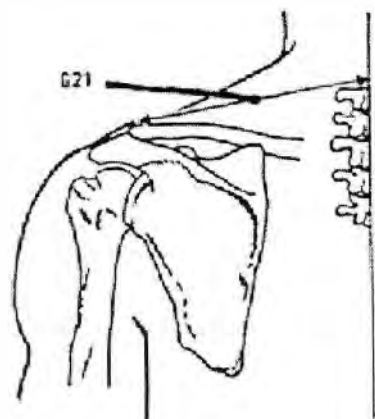
Triple Warmer, main meridian	66910 . 10 . 66
T 1	6610 . 779
T 2	665862
T 3	665902
T 4	663364
T 5	6646610
T 6	6675710
T 7	667659
T 8	665804
T 9	665854
T 10	667111
T 11	667792
T 12	662905
T 13	665565
T 14	667643
T 15	665910 . 5
T 16	6610 . 653
T 17	665689
T 18	664035
T 19	667576
T 20	665888
T 21	665526
T 22	668834
T 23	66710 . 76





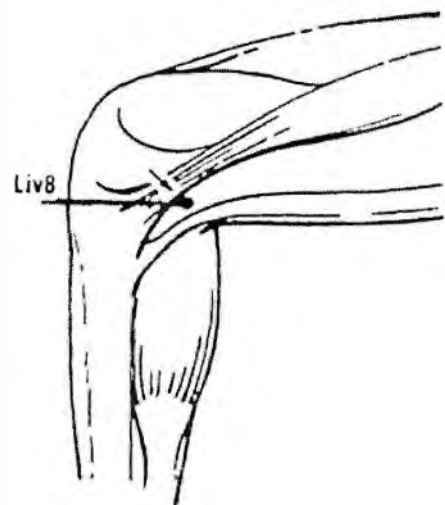
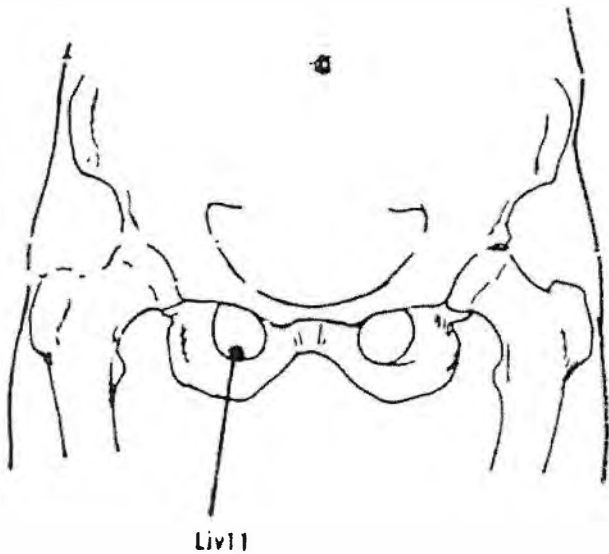
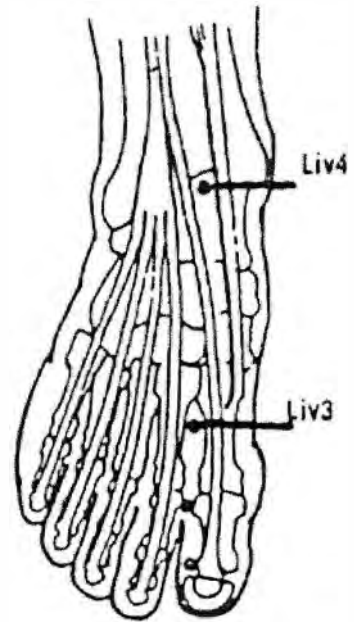
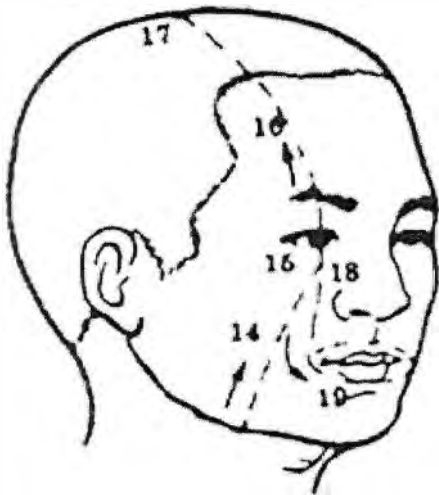
GALL BLADDER

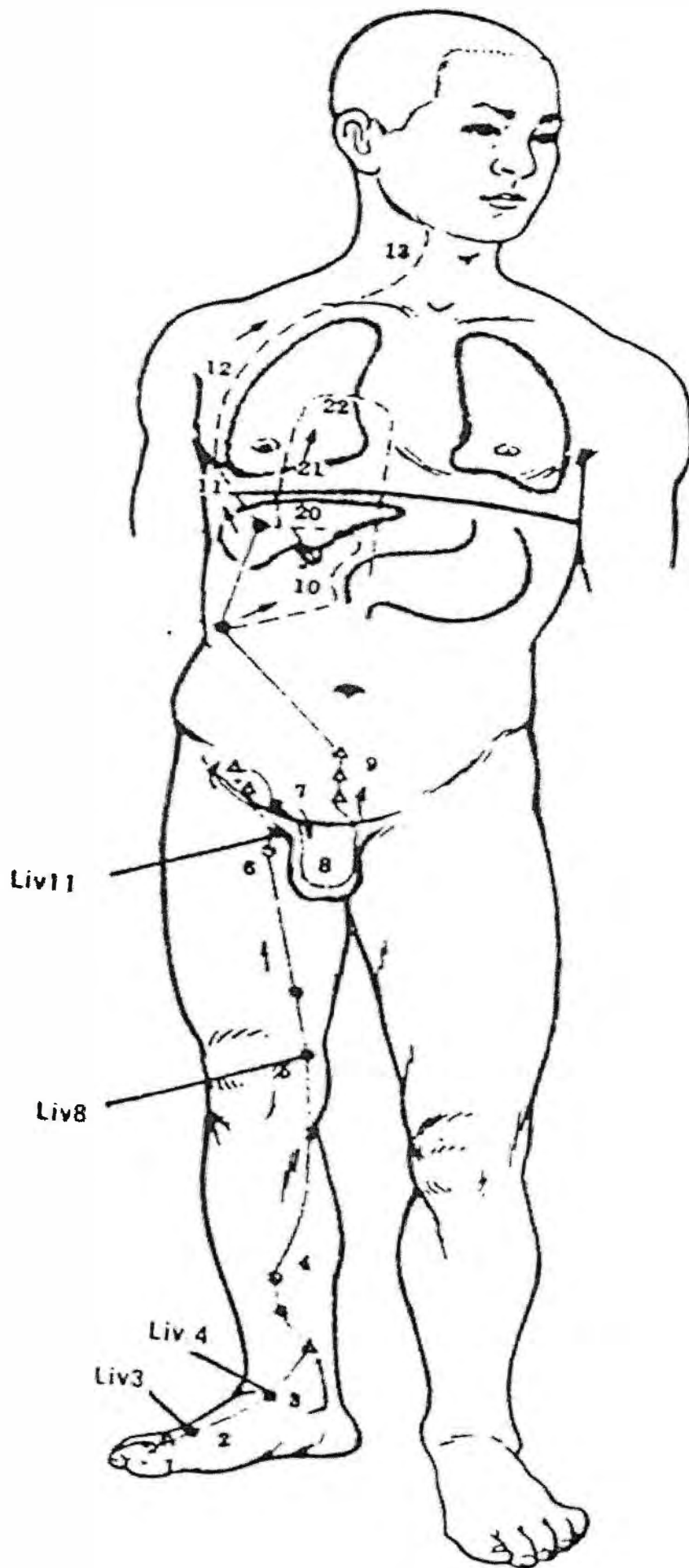
Gall Bladder, main meridian	7794556
G 1	774510 . 7
G 2	774525
G 3	778556
G 4	776877
G 5	773108
G 6	77810 . 64
G 7	775853
G 8	776658
G 9	77610 . 36
G 10	776904
G 11	775643
G 12	776867
G 13	778522
G 14	775421
G 15	777658
G 16	779503
G 17	774441
G 18	77610 . 55
G 19	776452
G 20	773775
G 21	7763710
G 22	775516
G 23	775427
G 24	777053
G 25	774231
G 26	775774
G 27	777823
G 28	775445
G 29	776332
G 30	777221
G 31	770773
G 32	77710 . 34
G 33	77210 . 09
G 34	775574
G 35	7723610
G 36	779201
G 37	773847
G 38	771278
G 39	776886
G 40	775710 . 5
G 41	777331
G 42	774467
G 43	775525
G 44	773438



LIVER

Liver, main meridian	10 . 10 . 84064
Liv 1	10 . 10 . 4285
Liv 2	10 . 10 . 8335
Liv 3	10 . 10 . 6967
Liv 4	10 . 10 . 8304
Liv 5	10 . 10 . 3349
Liv 6	10 . 10 . 5625
Liv 7	10 . 10 . 5764
Liv 8	10 . 10 . 0876
Liv 9	10 . 10 . 5487
Liv 10	10 . 10 . 5803
Liv 11	10 . 10 . 5164
Liv 12	10 . 10 . 6637
Liv 13	10 . 10 . 5759
Liv 14	10 . 10 . 8907

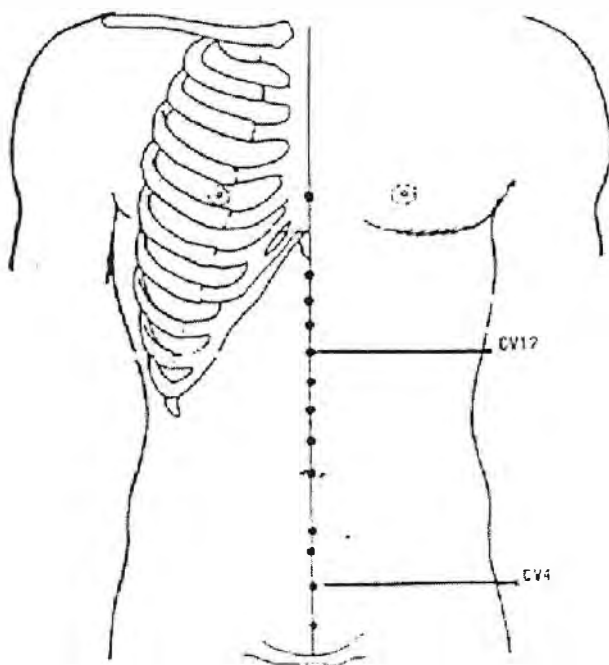


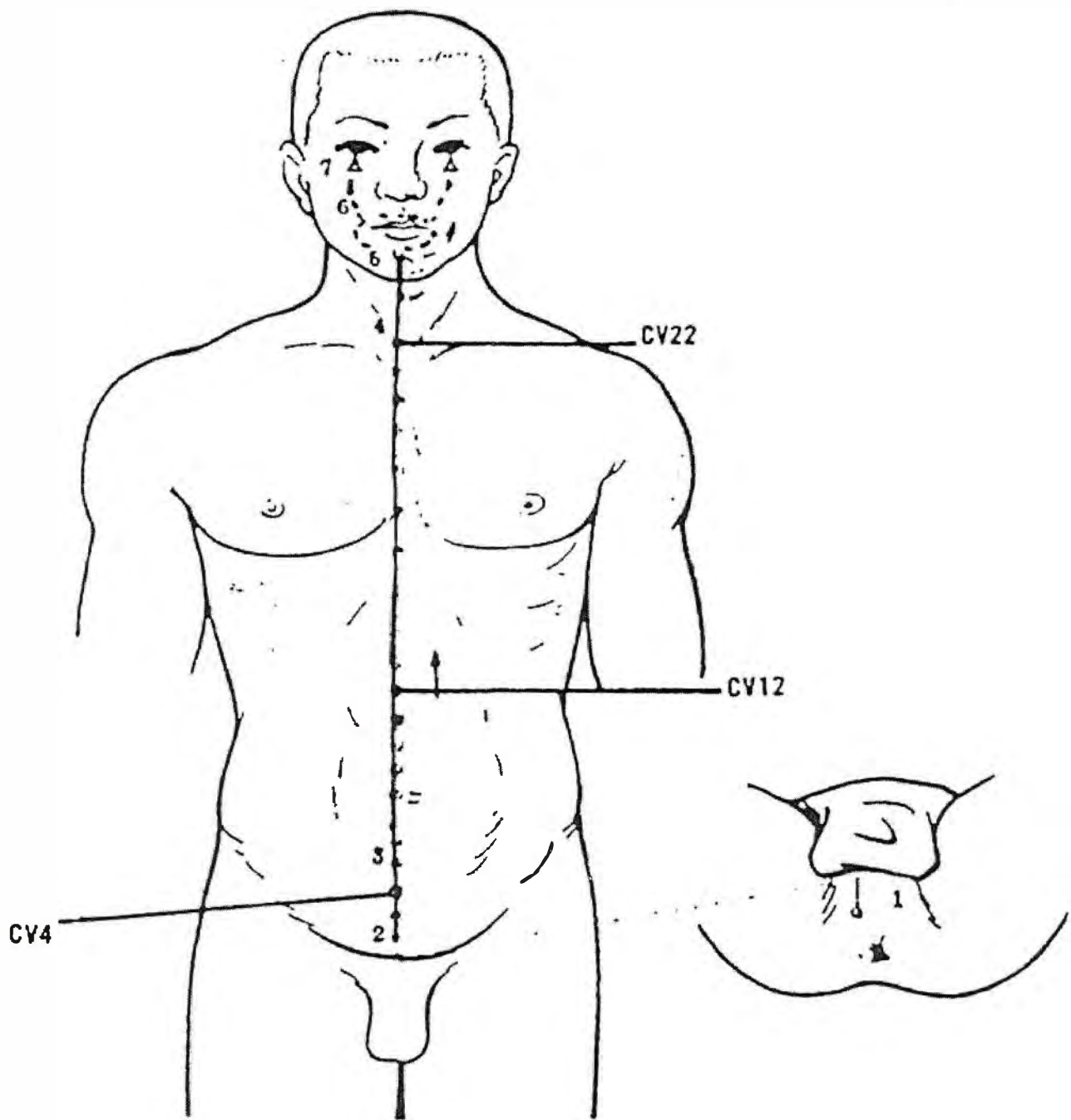


VESSEL POINTS

CONCEPTION VESSEL POINTS

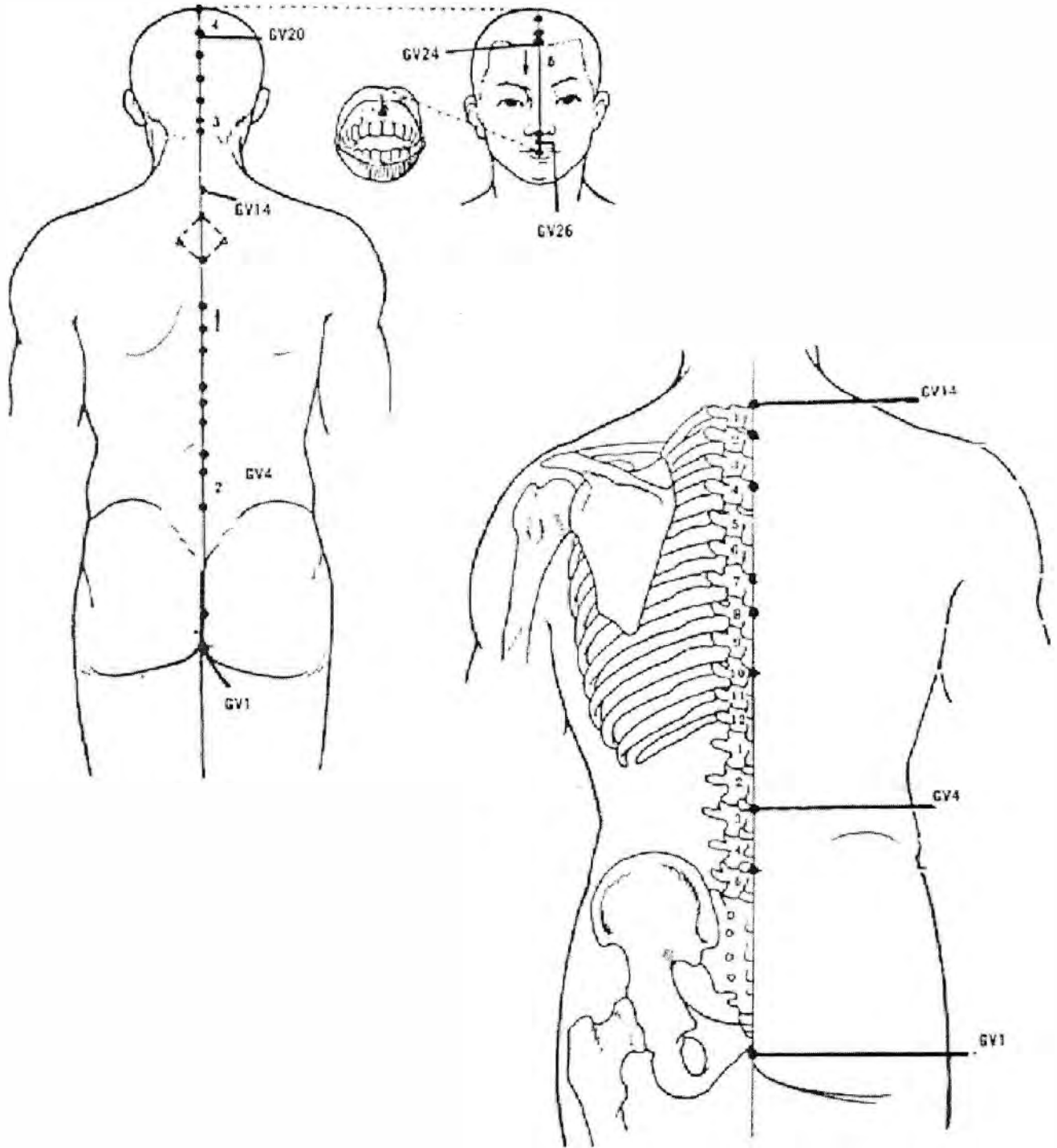
Conception vessel, main meridian	222448111
Cv 1	22282624
Cv 2	2224410 . 83
Cv 3	22211204
Cv 4	222410 . 38
Cv 5	22250643
Cv 6	22267532
Cv 7	22256566
Cv 8	22244475
Cv 9	22255249
Cv 10	22256332
Cv 11	222610 . 014
Cv 12	22210 . 6504
Cv 13	22237335
Cv 14	222810 . 523
Cv 15	222410 . 443
Cv 16	2227710 . 31
Cv 17	222710 . 407
Cv 18	22210 . 7656
Cv 19	22210 . 5326
Cv 20	222810 . 436
Cv 21	222610 . 711
Cv 22	22286766
Cv 23	222810 . 664
Cv 24	22257910 . 7





GOVERNING VESSEL POINTS

Governing vessel, main meridian	666769426
Gv 1	66668622
Gv 2	66658874
Gv 3	66664424
Gv 4	666710 . 768
Gv 5	66683053
Gv 6	6666410 . 53
Gv 7	66658876
Gv 8	66662877
Gv 9	66674633
Gv 10	66652121
Gv 11	66635863
Gv 12	6665510 . 64
Gv 13	66663886
Gv 14	66678575
Gv 15	66610 . 3932
Gv 16	66674789
Gv 17	66610 . 3404
Gv 18	666907798
Gv 19	66674792
Gv 20	66686810 . 7
Gv 21	66682534
Gv 22	66653311
Gv 23	66601627
Gv 24	6669610 . 97
Gv 25	66677767
Gv 26	66655375
Gv 27	66610 . 7033
Gv 28	66666952



NON-MERIDIAN POINTS

Non-meridian points

X 1	44475861
X 2	44492387
X 3	44443321
X 4	44477436
X 5	44455422
X 6	44457919
X 7	44418843
X 8	44422844
X 9	44477966
X 10	44421217
X 11	4442398
X 12	44446612
X 13	44466856
X 14	44464641
X 15	44499833
X 16	44483218
X 17	44455618
X 18	444510 . 632
X 19	44410 . 7987
X 20	44485664
X 21	44454448
X 22	44462507
X 23	44433449
X 24	44484921
X 25	44404562
X 26	444910 . 723
X 27	4442310 . 44
X 28	444669910
X 29	44410 . 7718
X 30	44440379
X 31	44481366
X 32	4449910 . 11
X 33	444110 . 723
X 34	44448826
X 35	44463336
X 36	44410 . 7177
X 37	44494826
X 38	444314410
X 39	44499135
X 40	44444610 . 6
X 41	44424828
X 42	4447210 . 29
X 43	44455161
X 44	44436910 . 3

NEW POINTS

New Points

N 1	88874361
N 2	88810 . 2143
N 3	888910 . 369
N 4	88865599
N 5	88844256
N 6	88866410 . 1
N 7	88879777
N 8	88891146
N 9	88886852
N 10	88843352
N 11	888610 . 10 . 13
N 12	88871682
N 13	8888710 . 47
N 14	88858813

POINTS OF TONIFICATION

Points of tonification

Lungs	point L 9	556564
Large Intestine	point Li 11	8810 . 676
Stomach	point S 41	22610 . 32
Spleen	point Sp 2	557437
Heart	point H 9	335217
Small Intestine	point Si 3	510 . 35
Bladder	point B 67	447389
Kidney	point K 7	115610 . 4
Circulation - Sex	point Cx 9	995844
Triple Warmer	point T 3	665902
Gall Bladder	point G 43	775525
Liver	point Liv 8	10 . 10 . 0876

POINTS OF SEDATION

Points of sedation

Lungs	point L 5	5510 . 451
Large Intestine	point Li 2	886582
	point Li 3	884555
Stomach	point S 45	2210 . 846
Spleen	point Sp 5	5510 . 064
Heart	point H 7	33758 . 10
Small Intestine	point Si 8	610 . 24
Bladder	point B 65	445151
Kidney	point K 1	111038
	point K 2	113645
Circulation - Sex	point Cx 7	996710 . 2
Triple Warmer	point T 10	667111
Gall Bladder	point G 38	771278
Liver	point Liv 2	10 . 10 . 8335

THE SOURCE

The source

Lungs	point L 9	556564
Large Intestine	point Li 4	88310 . 82
Stomach	point S 42	22610 . 10 . 3
Spleen	point Sp 3	3362010
Heart	point H 7	3375810
Small Intestine	point Si 8	610 . 24
Bladder	point B 64	445097
Kidney	point K 5	1110 . 545
Circulation - Sex	point Cx 7	996710 . 2
Triple Warmer	point T 4	663364
Gall Bladder	point G 40	775710 . 5
Liver	point Liv 3	10 . 10 . 6967

ALARM POINTS

Alarm points

Lungs		point L 1	55610 . 96
Large Intestine		point S 25	2210 . 486
Stomach		point Cv 12	22210 . 6504
Spleen		point Liv 13	10 . 10 . 5759
Heart		point Cv 14	222810 . 523
Small Intestine		point Cv 4	222410 . 38
Bladder		point Cv 3	22211204
Kidney		point G 25	774231
Circulation - Sex		point Cv 15	222410 . 443
Triple Warmer	(main)	point Cv 5	22250643
Triple Warmer	(superior)	point Cv 17	222710 . 407
Triple Warmer	(middle)	point Cv 12	22210 . 6504
Triple Warmer	(inferior)	point Cv 7	22256566
Gall Bladder	(main)	point G 24	777053
Gall Bladder	(secondary)	point G 23	775427
Liver		point Liv 14	10 . 10 . 8907

ASSOCIATED POINTS

Associated points

Lungs		point B 13	446754
Large Intestine		point B 25	446546
Stomach		point B 21	44510 . 68
Spleen		point B 20	449662
Heart		point B15	445810 . 5
Small Intestine		point B 27	445322
Bladder		point B 28	446551
Kidney		point B 23	447698
Circulation - Sex		point B 14	445254
Triple Warmer		point B 22	445424
Gall Bladder		point B 19	44610 . 01
Liver		point B 18	445798
Governing vessel		point B 16	447845

"Lo" POINTS

"Lo" points

Coupled meridians

Lungs	Yin	point L 7	557784
Large Intestine	Yang	point Li 6	886458

Coupled meridians

Stomach	Yin	point S 40	229964
Spleen	Yang	point Sp 4	447891

Coupled meridians

Heart	Yin	point H 5	335446
Small Intestine	Yang	point Si 7	3322

Coupled meridians

Bladder	Yin	point B 58	446910 . 2
Kidney	Yang	point K 6	116542

Coupled meridians

Circulation-Sex	Yin	point Cx 6	997835
Triple Warmer	Yang	point T 5	6646610

Coupled meridians

Gall Bladder	Yin	point G 37	773847
Liver	Yang	point Liv 5	10 . 10 . 3349

POINTS OF ENTRY

Points of entry

Lung	point L 1	55610 . 96
Large Intestine	point Li 4	88310 . 82
Stomach	point S 1	228845
Spleen	point Sp 1	669655
Heart	point H 1	335683
Small Intestine	point Si 1	310 . 67
Bladder	point B 1	447842
kidney	point K 1	111038
Circulation-Sex	point Cx 1	997769
Triple Warmer	point T 1	6610 . 779
Gall Bladder	point G 1	774510 . 7
Liver	point Liv 1	10 . 10 . 4285

POINTS OF EXIT

Points of exit

Lung	point L 7	557784
Large Intestine	point Li 20	886604
Stomach	point S 42	22610 . 10 . 3
Spleen	point Sp 21	4446610
Heart	point H 9	335217
Small Intestine	point Si 19	6445
Bladder	point B 67	447389
kidney	point K 22	115273
Circulation-Sex	point Cx 8	996835
Triple Warmer	point T 23	66710 . 76
Gall Bladder	point G 41	777331
Liver	point Liv 14	10 . 10 . 8907

THE FIVE ELEMENTS

The five elements

YIN Meridians

Lung

Earth	point L 9	556564
Fire	point L 10	556797
Metal	point L 8	554989
Water	point L 5	5510 . 451
Wood	point L 11	557971

Heart

Earth	point H 7	3375810
Fire	point H 8	335644
Metal	point H 4	336364
Water	point H 3	337676
Wood	point H 9	335217

Circulation-Sex

Earth	point Cx 2	996710 . 2
Fire	point Cx 8	996835
Metal	point Cx 5	996554
Water	point Cx 3	997466
Wood	point Cx 9	995844

Liver

Earth	point Li 3	10 . 10 . 6967
Fire	point Li 2	10 . 10 . 8335
Metal	point Li 4	10 . 10 . 8304
Water	point Li 8	10 . 10 . 0876
Wood	point Li 1	10 . 10 . 4285

Spleen

Earth	point Sp 3	3362010
Fire	point Sp 2	557437
Metal	point Sp 5	5510 . 064
Water	point Sp 9	334347
Wood	point Sp 1	669655

Kidney

Earth	point K 5	1110 , 545
Fire	point K 2	113645
Metal	point K 7	115610 . 4
Water	point K 10	113746
Wood	point K 1	111038

THE FIVE ELEMENTS

The five elements

YANG Meridians

Large Intestine

Earth	point Li 11	8810 . 676
Fire	point Li 5	882333
Metal	point Li 1	884777
Water	point Li 2	886582
Wood	point Li 3	884555

Small Intestine

Earth	point Si 8	610 . 24
Fire	point Si 5	5476
Metal	point Si 1	310 . 67
Water	point Si 2	57410
Wood	point Si 3	510 . 35

Triple Warmer

Earth	point T 10	667111
Fire	point T 6	6675710
Metal	point T 1	6610 . 779
Water	point T 2	665862
Wood	point T 3	665902

Gall Bladder

Earth	point G 34	775574
Fire	point G 38	771278
Metal	point G 44	773438
Water	point G 43	775525
Wood	point G 41	777331

Stomach

Earth	point S 36	226506
Fire	point S 41	22610 . 32
Metal	point S 45	2210 . 846
Water	point S 44	226499
Wood	point S 43	226044

Bladder

Earth	point B 54	443002
Fire	point B 60	445577
Metal	point B 67	447389
Water	point B 66	440068
Wood	point B 65	445151

SPECIALISED POINTS

Specialised points

General "Lo" Points

Cx 6		997835
T 5		6646610
L 7		557784
Cv 1		22282624
Gv 1		66668622

Group "Lo" Points

T 8	three Yang meridians of arm	665804
Cx 5	three Yin meridians of arm	995664
G 39	three Yang meridians of leg	776886
Sp 6	three Yin meridians of leg	776202

Centre Reunion General Points

B 17	reunion of Yang and Yin	447948
Li 4	reunion of Yang	88310 . 82
Gv 13	reunion of Yang	66663886
Gv 19	reunion of Yang	66674792

Centre Reunion Particular Points

Liv 13	reunion of five Tsang organs	10 . 10 . 5759
Cv 12	reunion of five Fu organs	22210 . 6504
Cv 17	reunion of breath energy	222710 . 407
Cv 15	reunion of vital centres	222410 . 443
S 36	reunion of energy	226506
S 30	reunion of food	228893

Extra Associated Points

B 17	diaphragm	447948
B 24	upper lumbar region	448788
B 26	lower lumbar region	444333
B 29	sacrum	440048
B 30	anal sphincter	4485510

Independent Associated Points

Gv 2	renal area	66658874
Si 10	arm	9326
K 16	central abdomen	114969
Li 15	middle shoulder	888735
Si 14	outside shoulder	4955
Liv 3	spasms	10 . 10 . 6967

SPECIALISED POINTS

Specialised points

Sp 5	Veins, joints	5510 . 064
S 32	Veins, arteries	225664
G 20	Vago-sympathetic	773775
B 10	Vago-sympathetic	444343
G 34	Muscles	775574
K 2	Slight vago-sympathetic	113645
B 38	Augments haematopoesis	447405
B 17	Blood, diaphragm	447948
B 60	pain, nervousness	445577
K 24	Nervousness, insomnia, cardiac	115310 . 5
B 54	Nervousness, skin, sciatica	443002
Si 3	Rheumatism of arm, eyes	510 . 35
Li 4	Ears, catarrhal	88310 . 82
S 36	Psyco-somatic	226506
G 39	Bone marrow, leucocytosis	776886
B 11	Bone marrow, leucocytosis	44510 . 32
L 9	Arteries and veins	556564
Cx 9	Arteries and veins	995844
Gv 4	Impotence, lumbago	666710 . 768
Gv 25	Nose, back	66677767
Gv 11	Mania	66635863

Shokanten

Greater Yang	Small intestine - Bladder	K 12	117558
Lesser Yang	Triple Warmer - Gall Bladder	S 25	2210 . 486
Sunlight Yang	Large intestine - Stomach	S 27	228999
Greater Yin	Lung - Spleen	Liv 13	10 . 10 . 5759
Absolute Yin	Circulation-Sex - Liver	Liv 14	10 . 10 . 8907
Lesser Yin	Heart - Kidney	K 16	114969
Lesser Yang		K 21	116588
Absolute Yin		K 19	115306

Meeting Points

Lung and Spleen	L 1	56610 . 96
Circulation-Sex and Liver	Cx 1	997769
Small Intestine and Bladder	B 1	447842
Triple Warmer and Gall Bladder	G 1	774510 . 7
Large Intestine and Stomach	Li 20	886604

SPECIALISED POINTS

The Meeting Points HO

Yang of Foot

Stomach	Lower meeting point	S 36	226506
Gall Bladder	Lower meeting point	G 34	775574
Bladder	Lower meeting point	B 54	443002

Yang of Hand

Large Intestine	Lower meeting point	S 37	22710 . 65
Large Intestine	Upper meeting point	Li 11	8810 . 676
Triple Warmer	Lower meeting point	B 53	444511
Triple Warmer	Upper meeting point	T 10	667111
Small Intestine	Lower meeting point	S 39	22510 . 87
Small Intestine	Upper meeting point	Si 8	610 . 24

The Points "Window of the Sky"

S 9	225652
Li 18	887535
T 16	6610 . 653
B 10	444343
L 3	556381
Cv 22	22286766
Gc 15	66610 . 3932
Si 16	5525
Si 17	5233
Cx 1	997769

SPECIALISED POINTS

The Sixty Six Antique Points

Lungs

1	L 11	557971
2	L 10	556797
3	L 9	556564
4	L 9	556564
5	L 8	554989
6	L 5	5510 . 451

Spleen

1	Sp 1	669655
2	Sp 2	557437
3	Sp 3	3362010
4	Sp 3	3362010
5	Sp 5	5510 . 064
6	Sp 9	334347

Heart

1	H 9	335217
2	H 8	335644
3	H 7	3375810
4	H 7	3375810
5	H 4	336364
6	H 3	337676

Kidney

1	K 1	111038
2	K 2	113645
3	K 5	1110 . 545
4	K 5	1110 . 545
5	K 7	115610 . 4
6	K 10	113746

Circulation-Sex

1	Cx 9	995844
2	Cx 8	996835
3	Cx 7	996710 . 2
4	Cx 7	996710 . 2
5	Cx 5	995664
6	Cx 3	997466

Liver

1	Liv 1	10 . 10 . 4285
2	Liv 2	10 . 10 . 8335
3	Liv 3	10 . 10 . 6967
4	Liv 3	10 . 10 . 6967
5	Liv 4	10 . 10 . 8304
6	Liv 8	10 . 10 . 0876

SPECIALISED POINTS

The Sixty Six Antique Points

Large Intestine

1	Li 1	884777
2	Li 2	886582
3	Li 3	884555
4	Li 4	88310 . 82
5	Li 5	882333
6	Li 11	8810 . 676

Stomach

1	S 45	2210 . 846
2	S 44	226499
3	S 43	226044
4	S 42	22610 . 10 . 3
5	S 41	22610 . 32
6	S 36	226506

Small Intestine

1	Si 1	310 . 67
2	Si 2	57410
3	Si 3	510 . 35
4	Si 4	6210 . 3
5	Si 5	5476
6	Si 8	610 . 24

Bladder

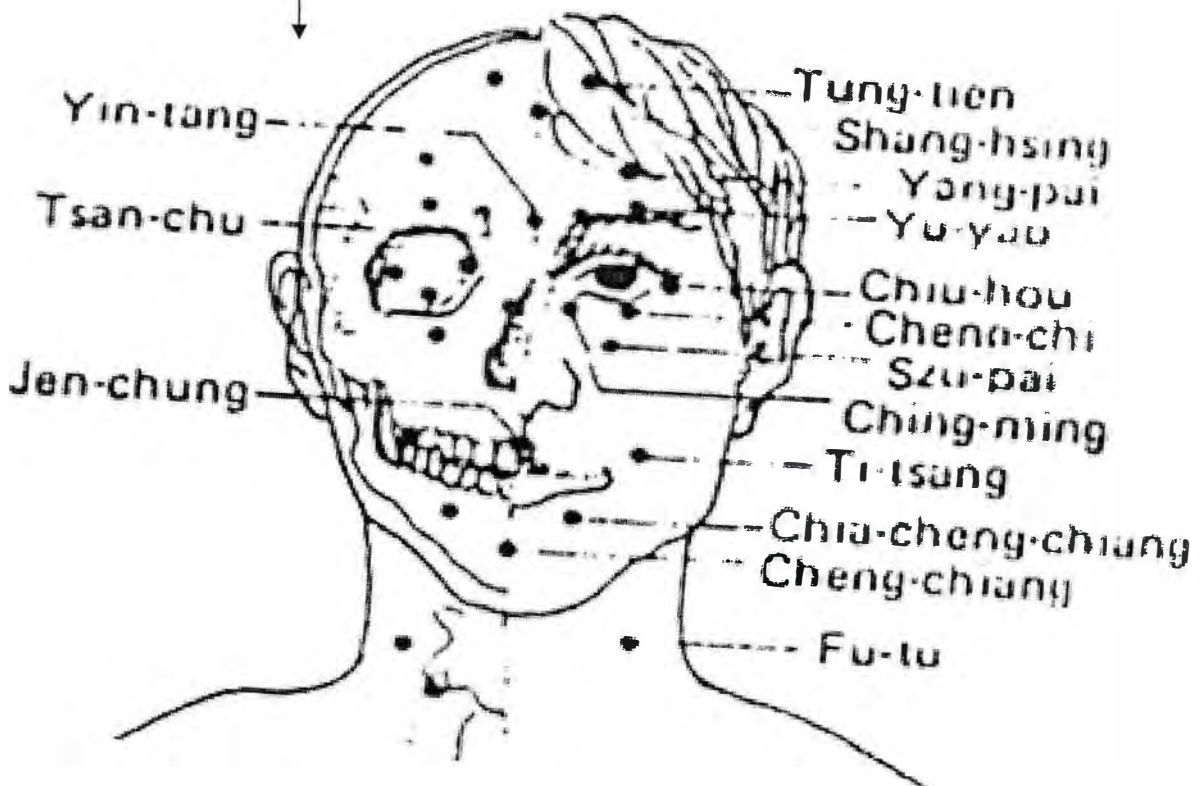
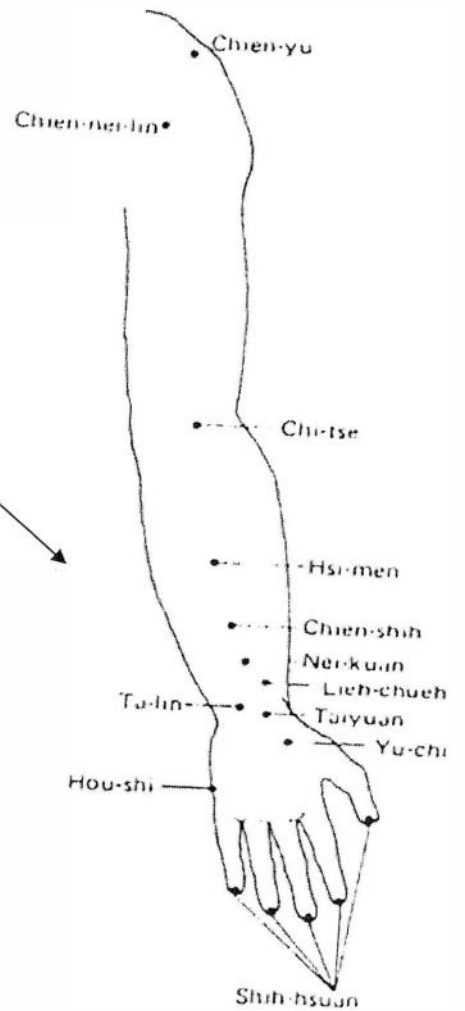
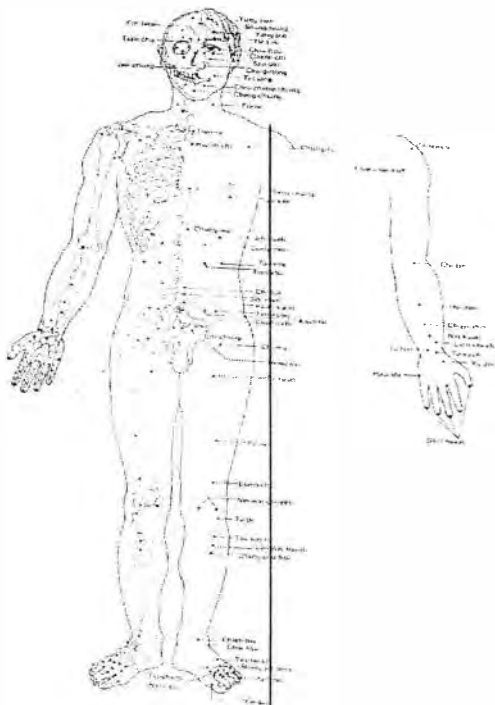
1	B 67	447389
2	B 66	440068
3	B 65	445151
4	B 54	445097
5	B 60	445577
6	B 54	443002

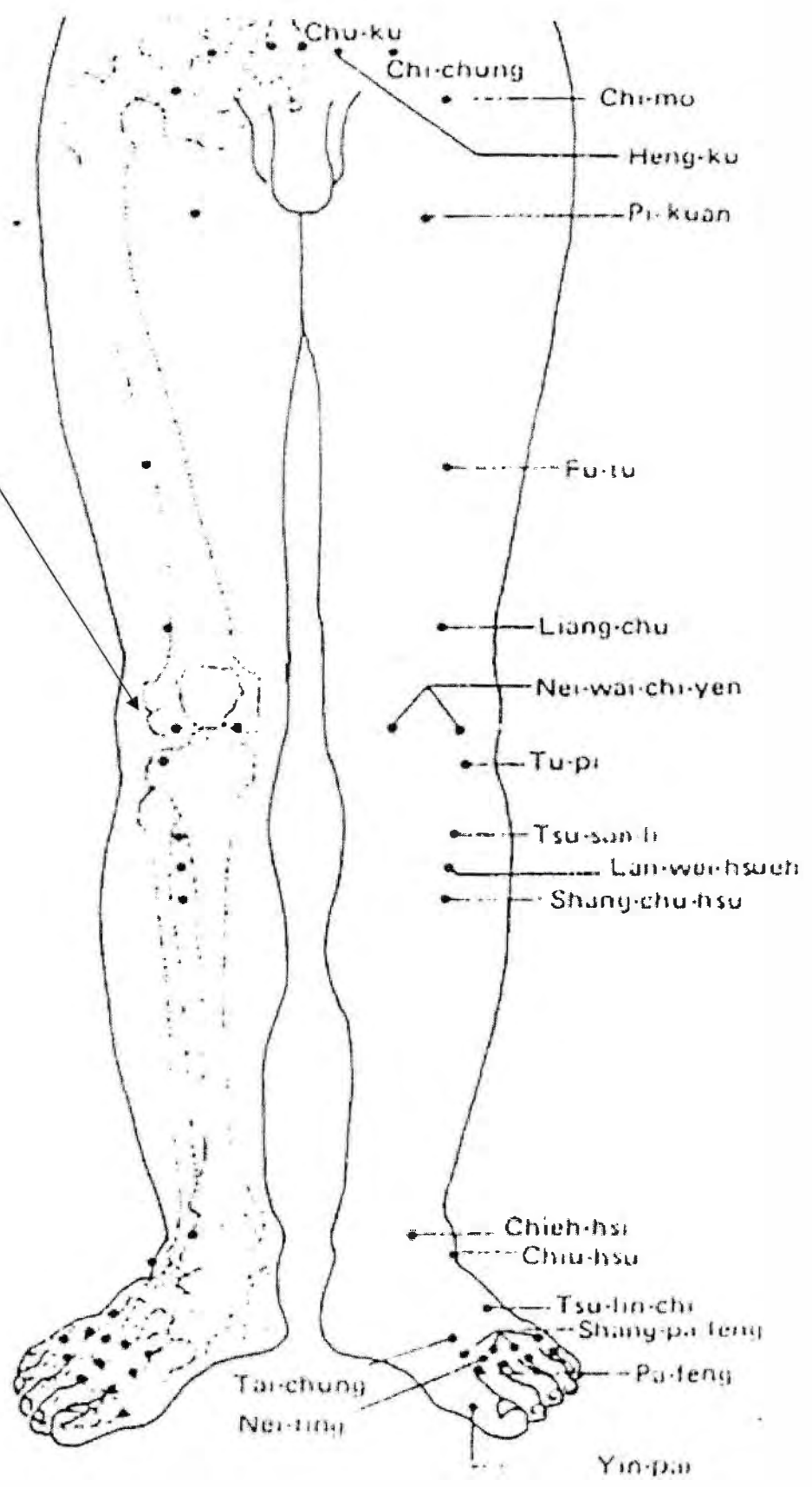
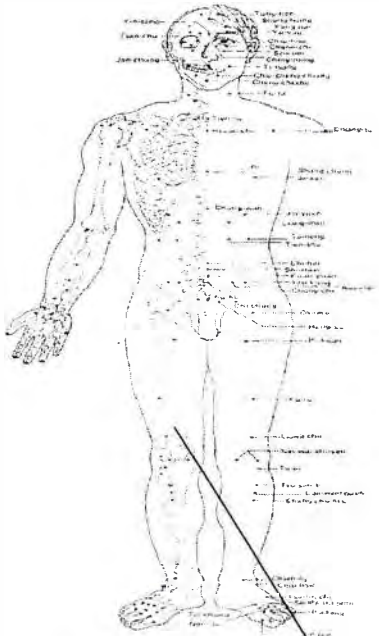
Triple Warmer

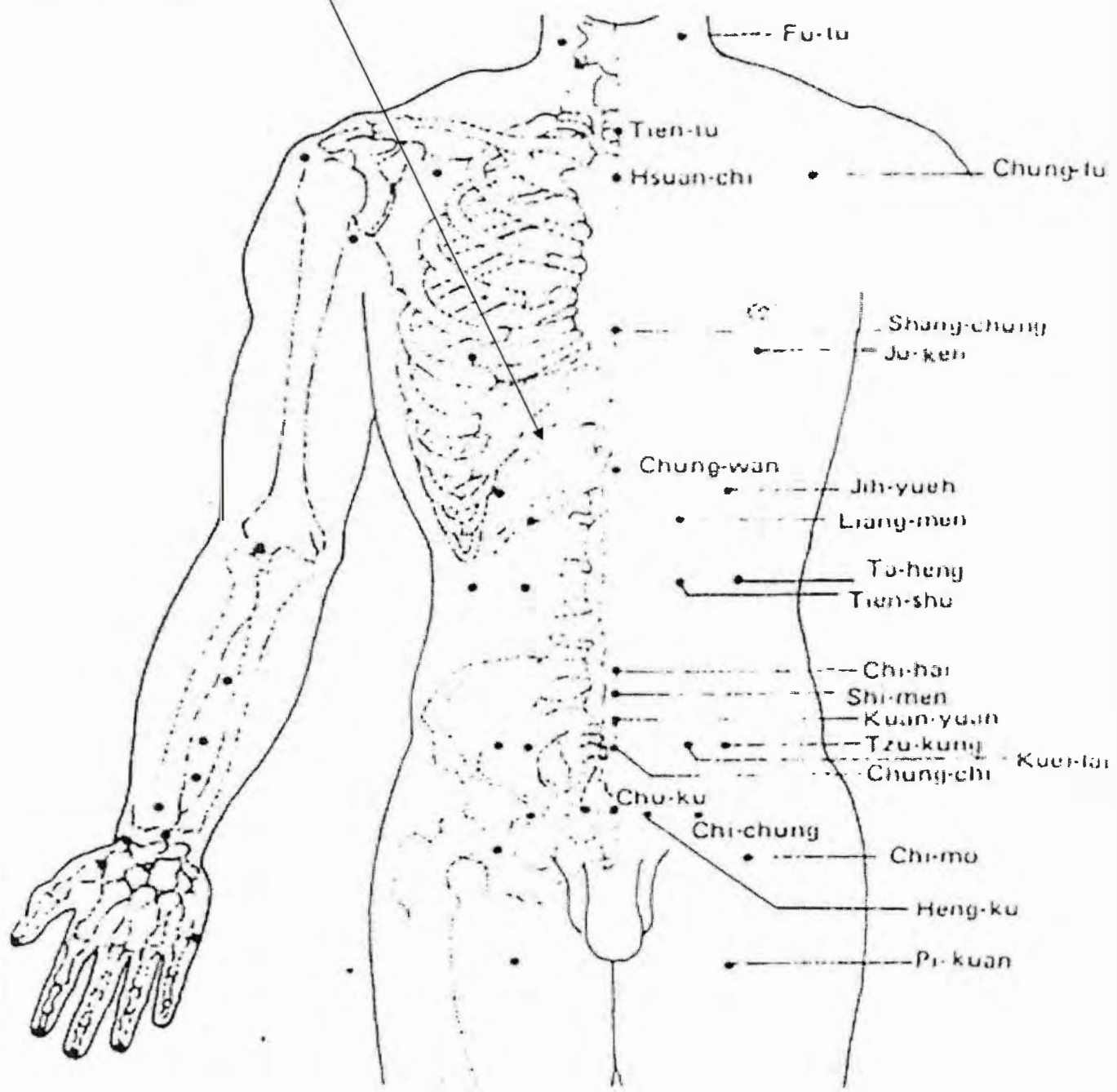
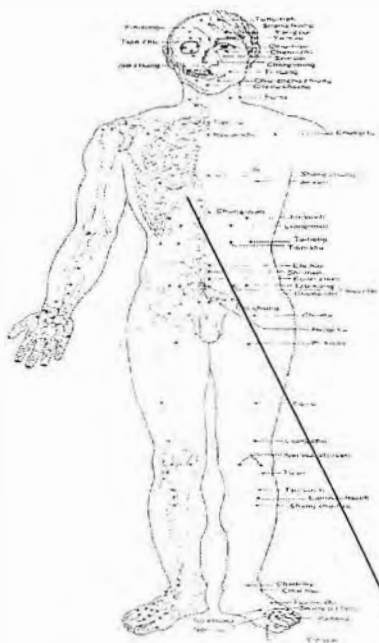
1	T 1	6610 . 779
2	T 2	665862
3	T 3	665902
4	T 4	663364
5	T 6	6675710
6	T 10	667111

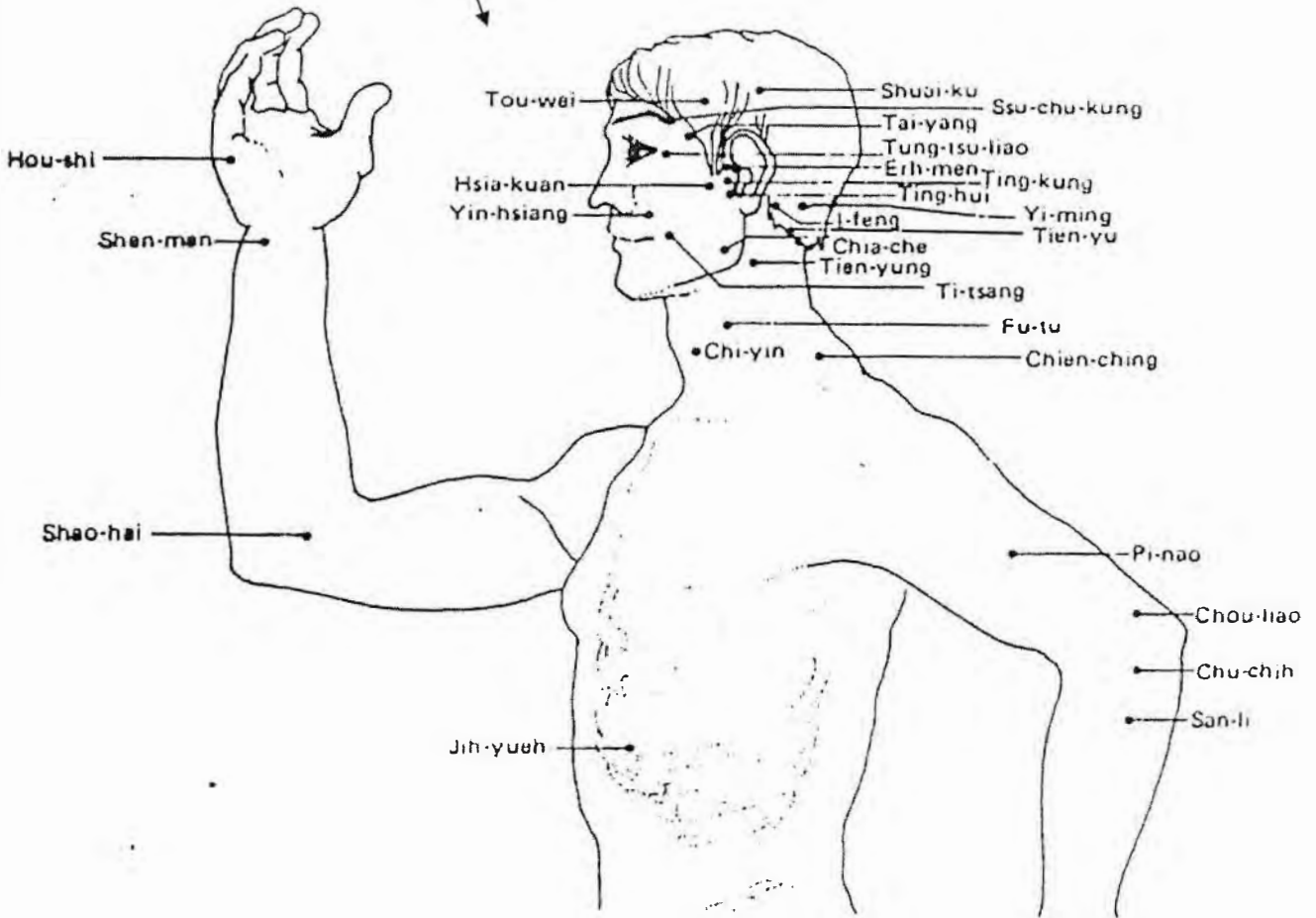
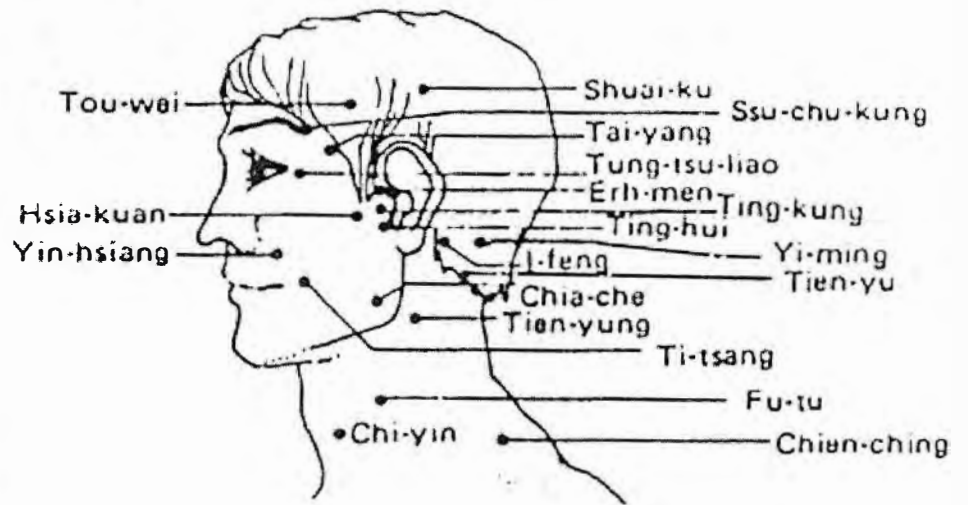
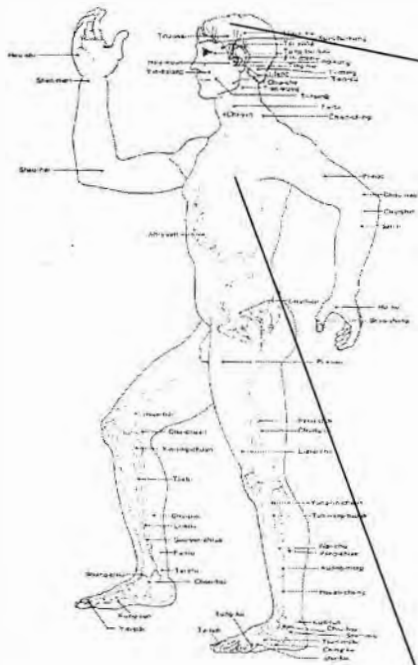
Gall Bladder

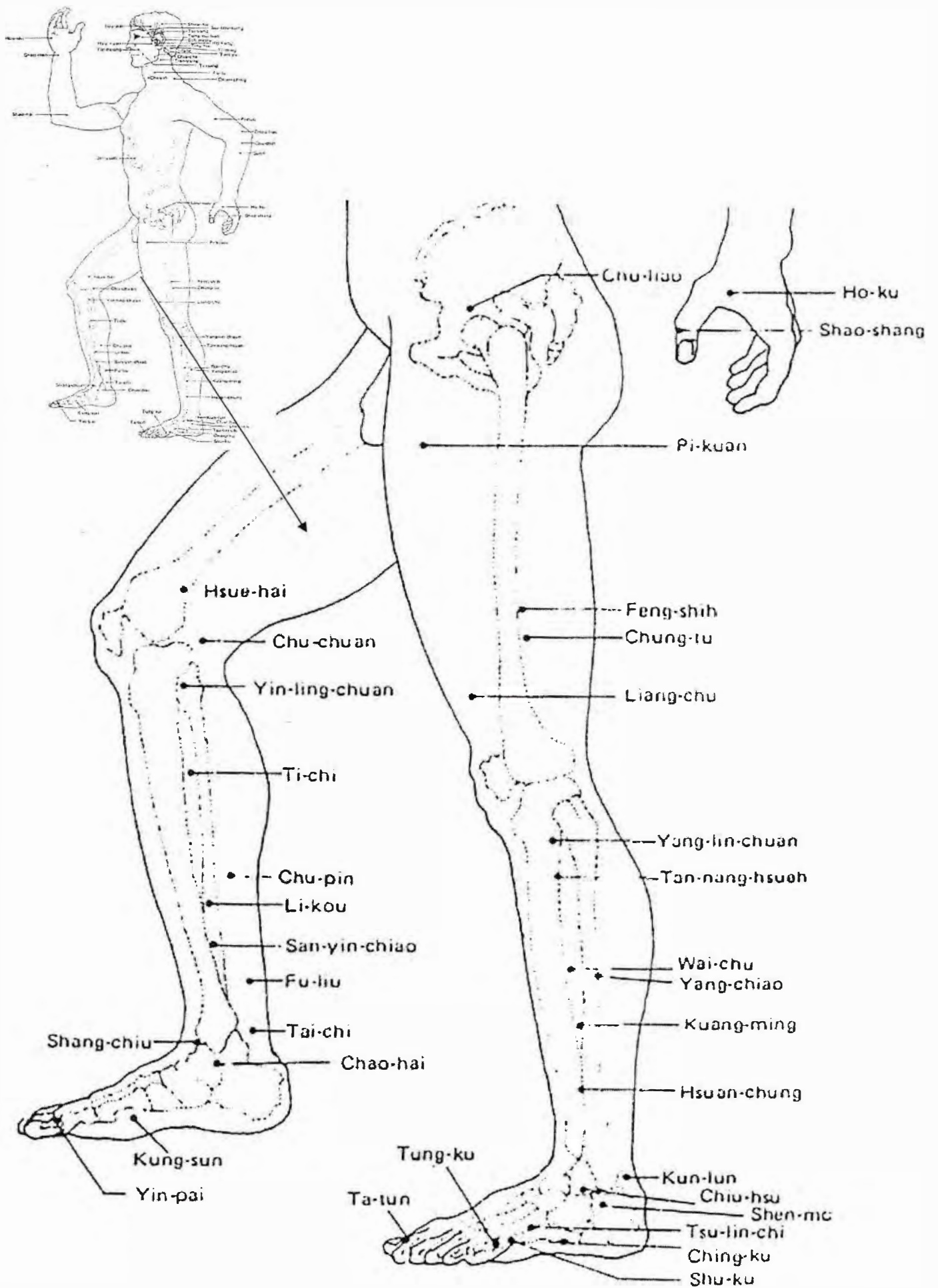
1	G 44	773438
2	G 43	775525
3	G 41	777331
4	G 40	775710 . 5
5	G 38	771278
6	G 34	775574

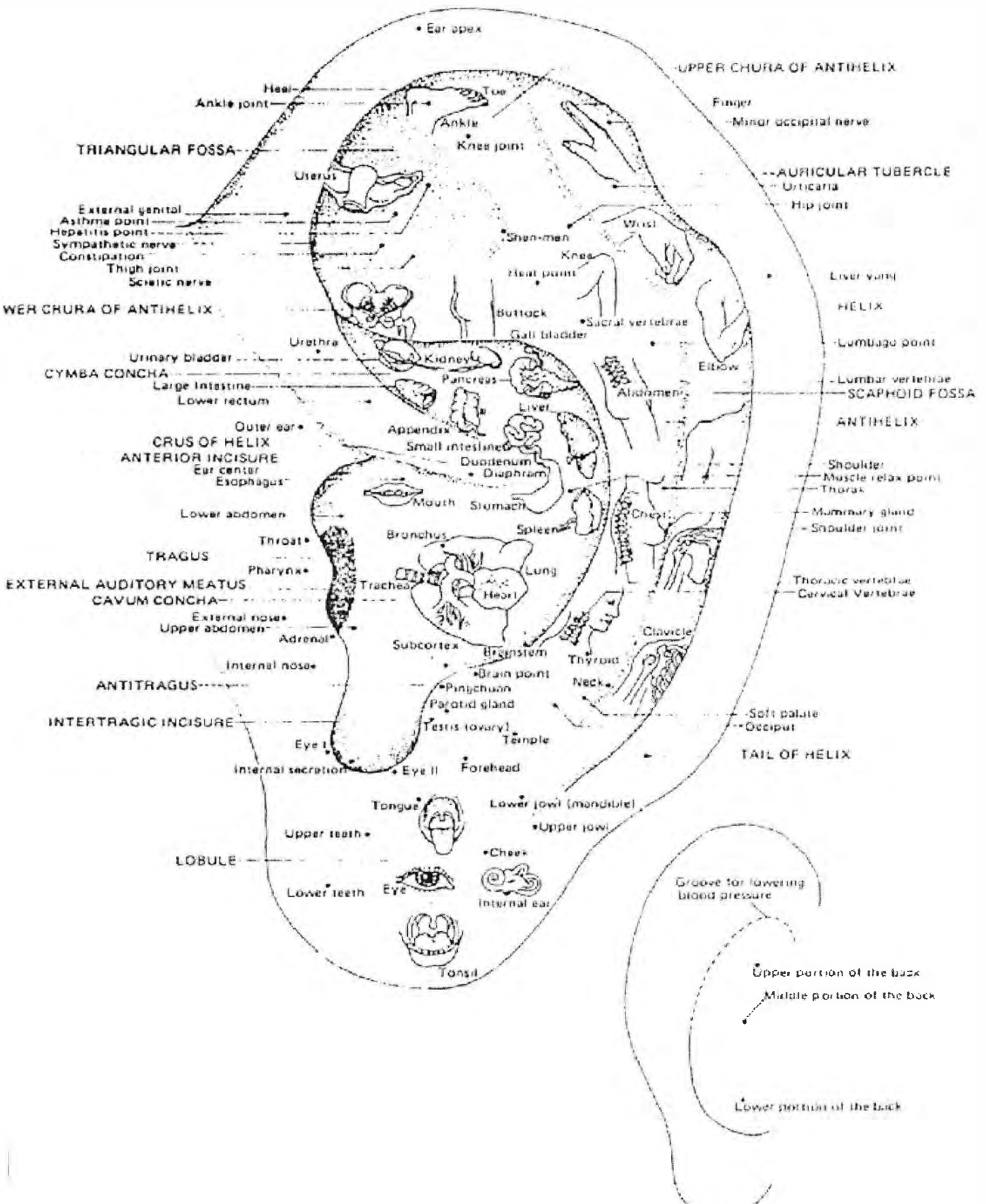












OUR CONTACT DETAILS

**Head Office, Manufacturing and Customer Services;
Bruce Copen Laboratories Limited**

Lindfield Enterprise Park, Lewes Road, Lindfield, West Sussex, RH16 2LX. United Kingdom
Tel; ++44 (0)1444 487 900, Fax; ++44 (0)1444 483 555
Internet; <http://www.copen.co.uk>
E-mail; salesbrucecopen@aol.com, info@copen.com

UK Support & Training

Brigitte Nix-Kuner

Tel; ++44 (0)1926 401 329
E-mail; bnix@copen.com

European Office;

Bruce Copen Laboratorien (Europa)

Harald Rauer

Hainbuchenring 4, Neuried, D-82061, Munchen, Germany
Tel; ++49 89 79 199 113, Fax; ++49 89 79 199 642
Internet; <http://www.copen.de>
E-mail; info@copen.de, hrauer@copen.com

American Office;

Bruce Copen Laboratories (PSITECH)

Barry Craft

P.O. Box 734, Mount Vernon, Illinois, 62864, USA
Tel; ++1 618 242 4215, Fax; ++1 618 242 4219
Internet; <http://www.copenlabs.com>
E-mail; copen@voyager.net

Austrian Office;

M.T Kosmus

Werner Kosmus

Tel; ++43 3142 25 548, Fax; ++43 3142 255 485
E-mail wkosmus@copen.com

Netherlands Office;

Anita van den bedem

Tel; ++31 35 603 2900, Fax; ++31 35 603 5714
E-mail abedem@copen.com