



The Journal of Borderland Research

VOLUME XLII, No. 2

MARCH-APRIL 1986

TABLE OF CONTENTS

UNDERSTANDING THE ROTATING MAGNETIC FIELD by Eric P. Dollard.....	1-6
COSMIC BLUEPRINT, Part 1 by Trevor James Constable.....	7-10
ADVANCED ELF PULSE GENERATOR by Peter A. Lindemann.....	11-14
THE SECOND CHANCE by Albert Zock.....	15-17
MYSTERIOUS RAYS FROM HUMAN EYE Reprinted from Popular Science, January, 1922.....	17
INTEGRATRON II by William F. Hamilton III.....	18-19
PARASENSORY TESTING by J.G. Gallimore.....	20-25
CLIPS, QUOTES & COMMENTS POLLUTION * THE INNER SMILE * EDITOR- AT-LARGE * AN EXPLANATION * COSMIC HUMANISM * THE LIGHT BULB * THE BARAN PAPERS * SHAVERTRON * AUTHORITIES * INNER CIRCLE * KARMA, THE GREAT TEACHER * RAYS IN PHOTOS TELL WHETHER SUBJECT LIVES * OUR NEW COVER * AN OCCULT APPROACH * FEAR * DINSHAH'S PLATFORM * CONTACTS * SCIENCE CORNER * 1985 ANNUAL REPORT *.....	26-36

THE JOURNAL OF BORDERLAND RESEARCH

THOMAS JOSEPH BROWN
Editor-Publisher

RILEY HANSARD CRABB
Editor-at-Large

ALISON DAVIDSON
Art Director
Staff Writer

ERIC P. DOLLARD
Science Director

THE JOURNAL OF BORDERLAND RESEARCH is the official organ of Borderland Sciences Research Foundation, PO Box 549, Vista, CA 92083-0190. The Journal is published six issues a year (bi-monthly) with the assistance of the Associates, at the Director's home, 1103 Bobolink Drive, Vista, California 92083.

BORDERLAND SCIENCES RESEARCH FOUNDATION is a non-profit (California state charter) organization of people who take an active interest in unusual happenings along the Borderland between the visible and invisible worlds.

SUBSCRIPTION to the Journal is \$15.00 a year and is included in a Foundation Membership fee of \$20.00 a year which also includes a discount of %15 on all Borderland Publications. SUPPORTING Membership is \$25 or more per year. FOREIGN Membership/Subscriptions are \$20 surface or \$30 airmail.

BORDERLAND SCIENCES RESEARCH FOUNDATION is now under the directorship of Thomas Joseph Brown. Alison Davidson is the Secretary-Treasurer. Eric Dollard is the Foundation Vice-President. The Foundation is incorporated under California law, May 21, 1951, #245263, and has been in continuous existence since then. Correspondence is addressed to PO Box 549, Vista, CA 92083.

THE MAIN FUNCTION of BSRF is to act as a clearinghouse for information. Donations of material are welcome in letter, article or book. We openly soliciting research material from the Associates of Borderland.

NO MEDICAL CLAIMS ARE MADE!! We present information for research purposes only. Do not come to us for a diagnosis or treatment. We WILL supply our membership with the best information possible, without prejudice or preconcieved notion, on subjects such as Ether Physics, Radionics & Radiesthesia, Dowsing, Tesla Technology, Hollow Earth & Underground Races, Fortean Falls, Occult and Psychic Phenomena, Photography of the Invisible, and UFOs.

DONATIONS and bequests toward Foundation research programs and expenses are welcome.

A LIST of BSRF Publications is available on request, please send a self-addressed-stamped-envelope.

Borderland Sciences Research Foundation was founded by N. Meade Layne. in 1945.

UNDERSTANDING THE ROTATING MAGNETIC FIELD

by ERIC P. DOLLARD

© 1986

TESLA, PHYSICS AND ELECTRICITY

Research into the works of Nikola Tesla reveals electric phenomena that behave contrary to the theory of electricity in present use. Explanation of Tesla's inventions has been given from the standpoint of physics, yielding many misconceptions. The science of physics is based on the phenomena surrounding particles and mass, which finds little application in the study of electric phenomena.

The explanation of Tesla's discoveries are to be found in the science of electricity rather than the science of physics. The science of electricity has been dormant since the days (1900) of Steinmetz, Tesla and Heaviside. This is primarily due to vested interests which we may call the "Edison Effect."

Charles Proteus Steinmetz

To assist in the understanding of Nikola Tesla's discoveries, thereby putting his inventions to work, a theory of electric phenomena applicable to these discoveries must be developed.

A starting point of such a theory has been developed by C.P. Steinmetz. Steinmetz was employed by the Edison/Morgan Company, General Electric, to decipher the Tesla patents, thereby evading these patents. With unlimited funds for research and a keen insight into electric phenomena, Steinmetz is a most significant contributor to the knowledge of electricity. His work is presented in three volumes:

- I) "Theory and Calculation of Alternating Current Phenomena", third edition, 1900, McGraw Hill, New York.
- II) "Theory and Calculation of Transient Electric Phenomena and Oscillations", third edition, 1920, McGraw Hill, N.Y.
- III) "Electric Waves, Discharges and Impulses", second edition, 1914, McGraw Hill, N.Y.

These serve as an introduction to the theoretical understanding required.

INTENT OF PAPER

This paper serves as a preface to a theoretical investigation of N. Tesla's discoveries by the examination of the rotating magnetic field and high frequency transformer. It is assumed that the reader is acquainted with the commonly available material on Tesla, and possesses a basic knowledge of mechanics and electricity.

THE ROTATING MAGNETIC FIELD

THE GENERALIZED ELECTROMECHANICAL TRANSFORMER

In the general electromechanical transformer energy is exchanged between mechanical and electric form. Such an apparatus typically employs a system of moving inductance coils and field magnets. It is

FIG 1

SINGLE POLE

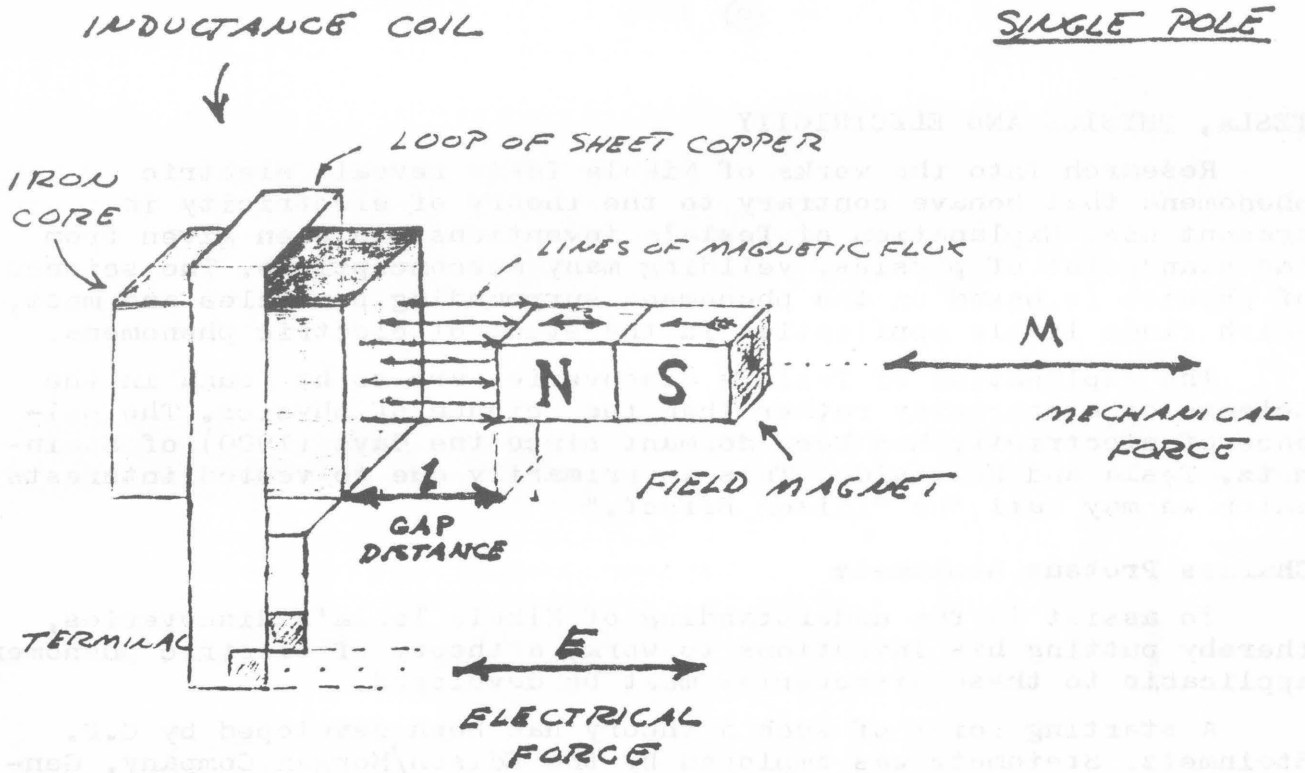
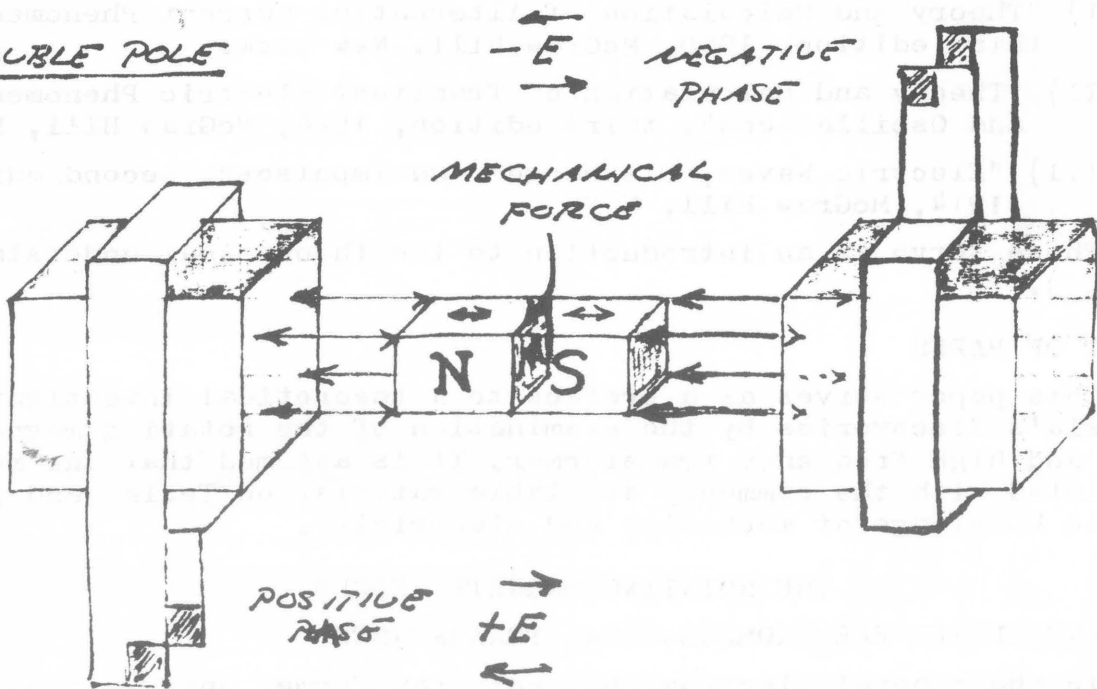


FIG 2

DOUBLE POLE



desirable that the mechanical energy produced or consumed by of rotational form in order to operate with pumps, engines, turbines, etc. The method of producing rotary force, without the use of mechanical rectifiers known as commutators, was discovered by Nikola Tesla in the late 1800s and is known as the rotating magnetic field.

ELEMENTAL PRINCIPLES

An examination of the rudimentary interaction between inductance coils and field magnets will provide some insight into the principles behind the rotary magnetic field.

Consider a simple electromechanical device consisting of a piece of iron with a copper loop winding around it along with a small bar magnet (Fig. 1). Any variation in the distance (1) between the pole faces of the inductance coil and magnet produces an electromotive force (voltage) at the terminals of the copper loop resulting from the field magnet's lines of force passing through the iron core of the inductance coil. The magnitude of this E.M.F. is directly proportional to the speed at which the distance (1) is varied and the quantity of magnetism issuing from the field magnet pole face.

Conversely, if an electromotive force is applied to the inductance coil terminals, the distance (1) varies at a speed directly proportional to the strength of the E.M.F. and the quantity of magnetism issuing from the field magnet pole face. Thus electrical force and mechanical force are combined in this device.

If a flow of electrical energy (watts) is taken from the coil terminals and delivered to a load mechanical resistancy (friction) appears at the field magnet as a result of magnetic attraction and repulsion between the magnet and iron core. Mechanical force applied to the field magnet in order to move it results in power flow out of the coil. This flow of power generates an oppositional or counter electromotive force which repels the field magnet against the mechanical force. This results in work having to be expended in order to move the magnet. However this work is not lost but is delivered to the electric load.

Conversely, if the field magnet is to deliver mechanical energy to a load, with an externally E.M.F. applied to the coil terminals, the field magnet tends to be held stationary by the resistancy of the connected mechanical load. Since the field magnet is not in motion it cannot develop a counter E.M.F. in the coil to meet the externally applied E.M.F. Thus electrical energy flows into the coil and is delivered to the field magnet as work via magnetic actions, causing it to move and perform work on the load.

Hence, mechanical energy and electrical energy are rendered on and the same by this electromechanical apparatus. Connecting this apparatus to a source of reciprocating mechanical energy produces an alternating electromotive force at the coil terminals, thus a linear or longitudinal A.C. generator. Connecting this apparatus to a source of alternating electric energy produces a reciprocating mechanical force at the field magnet, thus a linear A.C. motor. In either mode of operation the field magnet reciprocates in a manner not unlike the piston of the internal combustion engine. Rotary motion is not possible without the use of a crankshaft and flywheel.

FIG 3

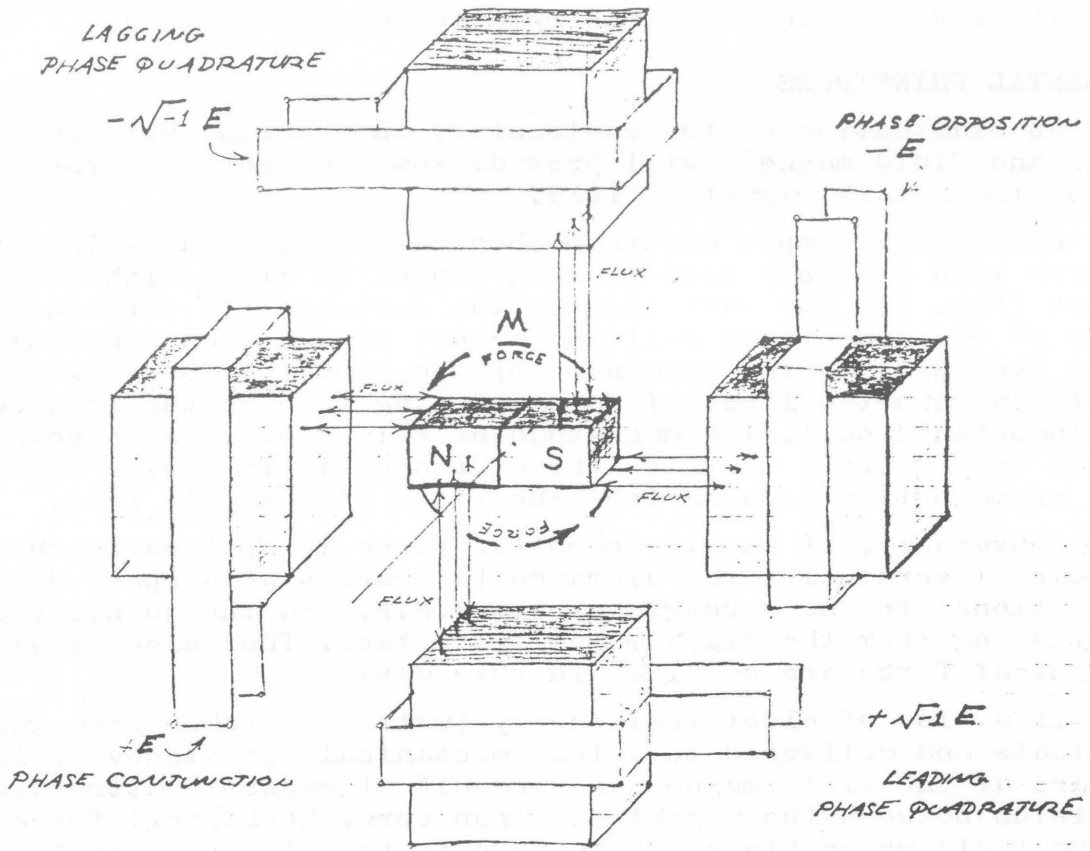
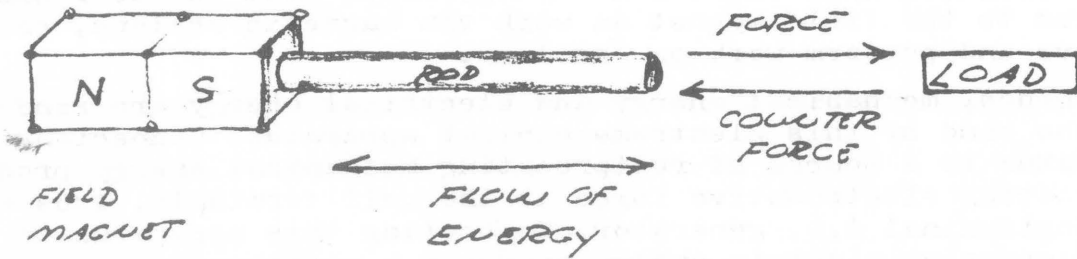


FIG 4



Arranging two inductance coils in a line as shown in Fig. 2 and connecting these coils to a pair of alternating E.M.F.s that are out of step by $1/2$ of an alternating cycle with respect to each other results in the mechanical force being directed inwardly into the molecular spaces (inner space) within the field magnet. The field magnet is alternately stretched and compressed by magnetic action and no external force is evident except as vibration and heat. However, arranging two of the pairs shown in Fig. 2 at right angles to each other, connecting each to a pair of alternating E.M.F.s that are out of phase or step by one quarter cycle (quadrature) with respect to each other produces a rotating travelling wave of magnetism, that is, a whirling virtual magnetic pole. This virtual pole travels from one pole face to the next during the time interval of one quarter cycle, thus making one complete revolution around all the pole faces for each cycle of alternation of the E.M.F.s. The field magnet aligns with the virtual pole, locking in with the rotary magnetic wave, thereby producing rotational force.

An analogy may assist in understanding this phenomena. Consider that the sun appears to revolve around the earth. Imagine the sun as a large magnetic pole and your mind's view of it as the field magnet. As the sun sets off in the distant horizon, it seemingly disappears. However, the sun is not gone but it is high noon 90 degrees, or one quarter, the way around the planet. Now imagine moving with the sun around the planet, always keeping up with it so as to maintain the constant appearance of high noon. Thusly, one would be carried round and round the planet, just as the field magnet is carried round and round by the virtual pole. In this condition the sun would appear stationary in the sky, with the earth flying backwards underfoot. Inspired to thinking of this relation by the poet Goethe, Tesla perceived the entire theory and application of alternating electric energy, principally the rotating magnetic wave.

"The glow retreats, done is the day of toil;
it yonder hastes, new fields of life exploring;
Ah, that no wing can lift me from the soil,
upon its track to follow, follow soaring..."

ROTATIONAL WAVES

The fundamental principle behind the production of the rotary magnetic field serves as the principle behind all periodic electric waves. It is therefore of interest to investigate the discovery a little further.

The apparatus shown in Fig. 1 develops mechanical force along the axis of the field magnet as shown in Fig. 4. Likewise, mechanical counterforce is applied along the axis of the field magnet. Hence, if work is to be drawn or supplied respectively to the field magnet from an external apparatus, a connecting rod is required between the two machines. The flow of energy is along the axis of the rod and thus is in line (space conjunction) with the forces involved. A simple analogy is a hammer and nail. The hammer supplies mechanical force to the nail, the nail transmitting the force into the wood. The counterforce tends to make the hammer bounce off the nail. However, the wood is soft and cannot reflect a strong counterforce back up the nail and

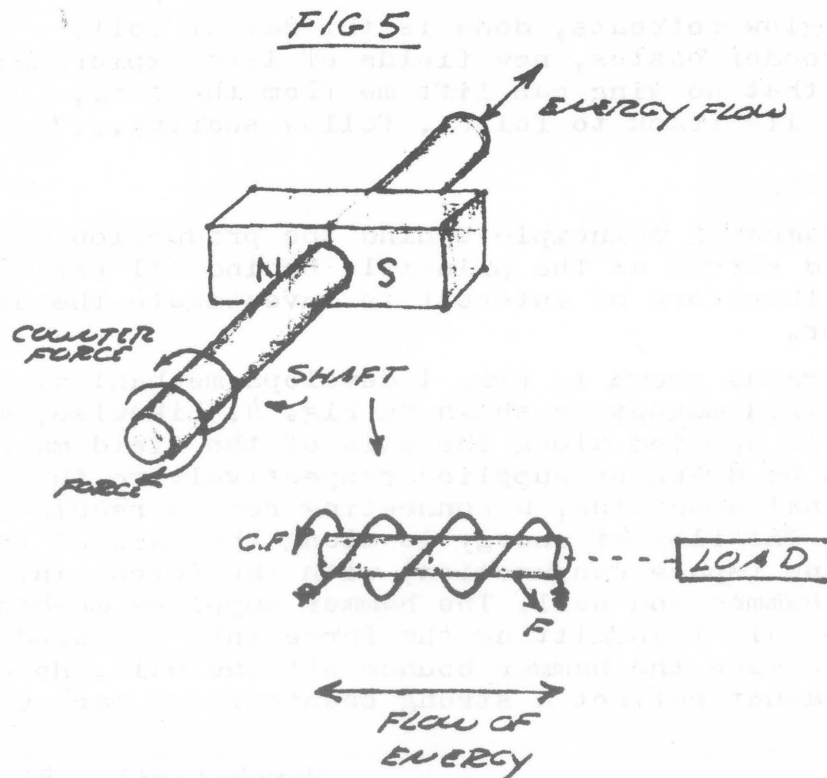
into the hammer. Thus the nail slides into the wood absorbing mechanical energy from the hammer which is dissipated into the wood.

The apparatus of Fig. 2 develops mechanical force axially also, but it is entirely concentrated within the molecular space. Any counterforce must push back along the same axis. Thus the work is also along axis like Fig. 4 and is delivered to the molecular structure. The analogy is two hammers striking a steel block from opposite sides, pounding the block and producing heat and vibration within it.

The apparatus of Fig. 3 produces a quite different wave form (Fig. 5). The mechanical force delivered to the shaft is applied at a right angle to the axis in clockwise direction. The counterforce is applied in the opposite rotational sense or counter-clockwise direction at a right angle to the axis. The flow of mechanical energy is still along the shaft as in Fig. 4, however, it no longer pulsates in magnitude with the cycle but it continues, quite like the flow of electric energy in a direct current circuit.

An analogy is a screw and screwdriver. The screwdriver is forced rotationally clockwise by the hand or other motive force. The counterforce appears in opposition, that is counterclockwise, thereby arresting the rotation of the screwdriver. However, the wood is soft and cannot reflect the counterforce back into the screwdriver. Thus the screw travels longitudinally into the wood, perpendicular to the rotation of the screwdriver.

The form of this wave has been of great interest to a wide variety of fields of endeavor. It has been called the Caduceus coil, spinning wave, double helix, solar cross, and of course the rotating magnetic field. Applications are as wide ranging, from sewage treatment plants and guided missiles all the way to the Van Tassel Integratron and astrology.



COSMIC BLUEPRINT

Part I

Chapter Eleven of

The COSMIC PULSE OF LIFE

by Trevor James Constable

"A man's mind stretched by a new idea can never go back to its original dimensions." Oliver Wendell Holmes

In attempting to provide a thumbnail sketch of the spiritual-scientific conceptions of Dr. Steiner, and of those who followed the pathway he broke, one is sharply conscious of a certain impertinence. Steiner's work is destined to change the character of modern knowledge, as well as expand the means of its acquisition. These are weighty matters. There are at present in print, in the U.S. and in the English language, at least 250 separate books and collections of lectures by Dr. Steiner. (Anthroposophic Press, Inc., 211 Madison Ave., New York, NY 10016). Let the following pages therefore be regarded as an outline sketch of those aspects of Steiner's work that enabled me to approach UFO phenomena in a new way.

Anthroposophy provides insight into the changes of consciousness that have taken place during human evolution, in various regions and periods of the past. Popular conceptions of ancient man present him as just like us, but lacking automobiles, electronics and similar modern appurtenances. Our belief today is that people did not really know anything before the rise of modern science and its measurement techniques.

Prior to the development, in the immediately recent past, of modern natural science, human beings held completely different views of cosmic and planetary evolution from those that are considered scientifically valid today. In earlier cultures, extending as far back as written records take us, men expressed their conceptions of cosmic workings in the "mythologies" that are an integral part of the cultural history of early humanity. Scientists lend no credence to these views of early men. Evolution and creation as seen by the ancients arose out of religious ideas and inspirations influencing humans in those early epochs.

Steiner has pointed out in many of his lectures, that all these varying cosmologies and cosmogonies--regardless of the geographical region, ethnic rooting or time period in which they were developed--attest to a mode of consciousness in their formulators markedly different from that of modern man. Spiritual beings were held to stand behind natural processes. These spiritual entities were deemed to be interwoven with earth life in a way that modern scientific consciousness can only regard as absurd.

Dr. Steiner recognizes and accepts the power and clarity of modern scientific thinking. At the same time, he repeatedly states that the particular type of brain-bound consciousness that has given rise to present material science, is a transitional form of consciousness. In short, changes of consciousness in the past

evolution of mankind are a fact. Changes of consciousness in the future are a certainty.

Breaking through all prior limits of knowledge drawn by earlier philosophers, Steiner himself demonstrated in the breadth and depth of his own life's work what the scientific mind of the future will be like. The scientist of tomorrow will have exact perception of the spiritual worlds, and of their processes and denizens. Present-day material science may be considered a sort of prototype of a future science that will understand the laws of the spiritual worlds with the same precision and clarity of thought now attending its physical endeavours.

As we move toward the increasing encounters with other-world intelligences and forms that are arising out of UFO manifestations, we do well to remember two things concerning the orthodox knowledge with which we are presently attempting official investigations of UFOs:

1. Modern natural science has been on the world scene only about a century and a half.
2. Until the advent of modern natural science, the mythico-religious conceptions of creation were the only conceptions entertained by humans. Their history extends back for millenia.

When technical data has been offered by non-terrestrials in contact with earthmen, as in the Van Tassel communications mentioned earlier, this technical advice has two main characteristics:

1. Advanced scientific concepts are employed that indicate technological mastery of etherian physics. These concepts have been largely execrated by official science when advanced theoretically by highly intelligent earth men. To the "spacemen" they are facts, far into technical application.
2. The entities involved speak of spiritual laws and forces with the same precision that we can apply only to "hard" technical fields like chemistry and optics.

The importance of Steiner's pioneering work - showing humanity the pathway to such superior cognition - should already be evident. He showed us how to get to where the UFOs and their controlling intelligences already are. We have to do the job ourselves. We do it in freedom.

Steiner gave mankind the basic means and methods for acquiring the powers of cognition necessary to extend our scientific understanding of creation. The extension must inevitably be into the supersensible realms that stand behind the manifested world. Such glimpses of the New Knowledge in technical application as the UFOs have given us, leave little doubt that 21st century science is going to be radically different to that of today. So will be the consciousness of its scientists.

The time to set such changes on foot is now.

The contemporary deracination of any kind of spiritual or soul force as active in earth life is a recent thing in the evolution of humanity. Through all prior time, man maintained cosmic connections. The impact of UFOs on scientific consciousness - their arousal of technical curiosity and their inaccessibility to existing methods -

has been immense. The UFOs have confronted us with the need to change ourselves. The direction of change will be as Dr. Steiner indicated - the systematic acquisition of superior cognitive and perceptive powers - and by the means he defined.

Thousands of young science students in the past decade took "trips" with LSD and other psychedelics, blasting open centers of higher perception with this powerful drug. Out of this pathological but nevertheless devastatingly real contact with mind-stuff and emotion-stuff, has come a general impulse toward spiritual renewal. The science student who has seen the working of the ethers while under drugs becomes a candidate for their theoretical study, and for the intelligent application of his will to his own inner development. The strong souls will develop in themselves the same perceptual and cognitive powers as Dr. Steiner.

Modern materialistic science and its specialized consciousness have reached back into earlier earth life in the course of scientific investigation. Writings, drawings and records arising from human inner wisdom have been classified as mere superstition. This attitude stems from the impossibility of our viewing the cosmos with the consciousness of a Chaldean star-worshipper or an Egyptian priest. There is justification for the attitude of modern science, but it is essentially one-sided, and that is its weakness.

Cosmologies predating modern science had Man as the center and purpose of earth evolution. He was seen as worked upon by spiritual beings, powers and forces in an upward path to perfection. Modern materialistic science, by contrast, regards man as the end product of a series of bio-chemical accidents and arcane distillations, and there is as yet no coherent theory of evolution capable of withstanding the mounting torrent of scientific discoveries. Science is adrift in this field largely because it has not yet learned to read correctly the facts it has found. As with UFOs, the problem is not a lack of hard data, but a question of perception and consciousness.

The ancients conceived of the world and man as being built up over the eons by divine workings. In the sciences of the future, we will regain a similar knowledge of human origins, according to Dr. Steiner. This future science will develop its understanding of evolution by fortifying its external work with exact supersensible perceptions, scientific discipline, and a firm knowledge of the four basic ethers whose formative powers rule physical creation. Ancient men felt themselves intimately membered into these etheric weavings, and out of this relationship arose what we regard today as ancient mythologies.

Modern materialistic science extinguishes all such intuitive feelings in its votaries. The systematic biasing of otherwise free minds is the bedrock of higher education, which George Bernard Shaw appropriately described as a "budget of lies". The religious conceptions that survived the rise of modern science were relegated to the philosophical domain of faith - the bailiwick of ministers, mystics and the multitudes who followed them. As science multiplied its power of investigation, the religious field came to be regarded as essentially for the misguided and ill-informed.

For the old conceptions of divine workings, science substituted the Kant-La Place theory of evolution. Synthesized out of the conceptions of philosopher Immanuel Kant (Natural History of the Heavens) and the theories of Napoleon's astronomer Pierre La Place, this was an approach to evolution wholly in tune with the juggernaut of Mechanism. Stripped of all soul, spirit and kindred influences, the Kant-La Place theory presented a lifeless, sterile picture of the origins of the earth.

A glowing, revolving gas ball is deemed to have slowly condensed, under this theory, spinning off the planets into their orbits. The whole thing eventually settled into the configuration we see today. Verifiable mechanical laws rule the whole happening. Soul and spirit become superfluous to what are regarded as the hard, physical facts. Life on earth is a later, seemingly accidental addition to the basic sterility of the earth's origin. To this day, scientists have been content with this theory. As this is written, it is being crammed anew into the heads of yet another hapless generation of youngsters.

Evolution thus came to be regarded scientifically as something starting from inert substance, proceeding from below upwards. The basic astronomical mathematics of Johannes Kepler were an indispensable step in the consolidation of these modern scientific ideas of evolution, but were divested of Kepler's conception of the universe as the body of a gigantic spiritual being. Any suggestion of spirit in the new concepts was left with the mythological notions of ancient men, amid the dust and junk of long-dead civilizations.

The searingly hot Kant-La Place gas ball is a mechanist's delight. Physical man or other life - either as an extant entity at the time or as a prior contributor to evolution - was totally eliminated. My discovery of the plasmatic bioforms - heat critters - undoes the idea that great heat and life are incompatible and paves the way for a new empirical beginning. Since Kant-La Place, however, notions of when and how life on earth started, have in formal circles, occupied some of our brightest minds. These varying notions have also triggered some of the fiercest arguments between scientists.

The sterility that is seemingly inseparable from that glowing gas ball, and the mechanical notions of evolution constrained by its acceptance, have blocked generations of thinkers from reaching any valid conceptions about the origins of the earth. Dr. Steiner's indications, based on exact supersensible perception, open all the necessary doors. What he has provided is in harmony with basic natural scientific findings. All this, in turn, reaches with illuminating power into some of the central riddles of ufology.

(To be continued)

© 1976, reprinted with permission of the author. Trevor has donated 24 copies of COSMIC PULSE OF LIFE to Borderland Sciences Research Foundation. A copy can be had for \$12.95 plus \$1.00 p & h. These are on a first come first served basis. Don't miss this opportunity for this out of print classic.

ADVANCED ELF PULSE GENERATOR

by Peter A. Lindemann

If you are interested in some serious research into the "entrainment" effect without attaching electrodes to your body, here is a new pulse generator to work with. It's called the JLN-100, Jet Lag Neutralizer, but it has many, many uses other than the elimination of jet lag.

DESIGN PROBLEMS

Most other ELF oscillators suffer from a serious deficiency. The frequency of the pulse produced by the oscillator is dependent on the exact voltage supplied by the battery. As the battery wears down, the frequency generated at a specific calibration usually drops proportionately. This means that the calibrations are only TRUE when the battery is fresh. I realized that if I wanted to find out the long term effects of a specific frequency, I couldn't do it with these devices. I would have to calibrate the unit daily or connect it to a non-battery constant voltage source. Either way of making the unit reliable limited its portability. A reliable, portable unit was not available to Borderland Researchers.

TOTALLY NEW APPROACH

Unlike the 555 IC and other timer type chips, the heart of the JLN-100 is the twin op-amp LM10CLN. The LM10 operates a "reference voltage" of only 200mv, obtainable from the deadest battery. Since the LM10 uses such low voltage, the whole unit can run on 3 volts instead of 9 volts. That way the battery pack can store more amperage for longer operating times between battery changes.

As the battery voltage drops from 3.12VDC (new) to 1.6VDC (dead), the frequency of the oscillator rises slightly from 100% to 104% of calibration. The low end operating limit is about 1.7 VDC due to the LED. This is truly a reliable, portable unit. The oscillator is calibrated for 7.83 Hz but is stable from 3 to 25 Hz.

ANTENNA DESIGN

Magnetism has been a fascination for me since the mid-70s. I have played with a lot of ways to stimulate the human aura magnetically. In every case, the magnetic field, whether produced by a permanent magnet or a pulsing ELF device, caused an irritation I call a "magnetic burn." Any simple ELF pulser that converts an electric pulse into a magnetic pulse by running it through a solenoid of some kind produces this irritation along with the beneficial effects.

NEW THEORY YIELDS NEW ANTENNA DESIGN

All the research I have seen written on ELF magnetic pulse devices and the entrainment effect of the human nervous system suggests that the body is responding to the "B" field. I do not

Believe this is the case. The only "field" that the body is totally inter-connected with is the envelope of LIFE FORCE that surrounds the planet. Dr. Wilhelm Reich, in his many treatises on the ORGONE ENERGY describes its unique interactions with magnetism and electricity. My hypothesis is that the Life Force Field is stressed in some way by a magnetic field turning on and off. Our bodies respond to the rhythmic waves in the Life Force Field that surrounds us. If this is true, then the antenna of an ELF pulser does not have to propagate a "B" field to cause the entrainment effect. It only has to "stress" the Life Force!

After considerable thought, I decided that a coil designed to propagate "B" fields in both directions simultaneously was the key. The magnetic fields superimposed and cancelled the effects of each other, but the "stress" in the Life Force and the entrainment effects remained present! A simple, flat spiral of 3 turns inward and 3 turns outward pulsed with only .35ma produced a "stress" wave with over a 3 meter radius. The pulse of this antenna cannot be measured magnetically even at close range. It cannot INDUCE electric or magnetic effects in other appliances in the vicinity, yet it does propagate the necessary entrainment carrier wave. It is easy on the human aura and leaves no irritating side effects like the "magnetic burn."



This antenna is really amazing. You can measure the electric pulse that the oscillator is producing on a frequency counter. You can measure the predominant brainwave entrainment of a person nearby on an EEG machine, but there is nothing measureable in-between the person and the antenna.

MODIFY YOUR SYSTEM

I hope that other Borderlanders start some experiments based on this work. You can at least compare the performance of this new antenna with the one you are now using. I imagine that some of you will make antennas with many turns in both directions. You might just see how powerful a few turns is first, I hope.

THE NATURE OF JET LAG

Jet lag is a complex condition. Although modern medical studies are focussing on the psychological effects of time zone changes, diet and metabolic adjustments, there are other components to the problem. I am a healer by profession. When my abilities first appeared, 10 years ago, I started treating people suffering from jet lag. One such client described her condition as follows. "My symptoms of jet lag include feeling 'hollow' and 'stretched out' inside my body, experiencing fatigue but unable to rest, having difficulty thinking clearly and coordinating details, and sometimes feeling dizziness, disorientation and headaches." As I saw more people who had just gotten off a plane, I saw that they all had the same basic conditions. Each had a specific disruption in the outer levels of the aura. Whereas a healthy human aura is characterized by a soft, smooth outer edge, these jet lag people each had a crinkled and embrittled layer at the outer most edge of their energy field.

There was also something else. Every cell in the body had a slight shock in it. Over the years, I came to this hypothesis. The damage to the outer aura resembled the "magnetic burn" I had seen from the magnetic stimulators I was testing, except that it was all over the body. I eventually concluded that it was caused by the very rapid movement through the magnetic field of the earth. This component of the jet lag picture was always worse for east and west flights and less for north and south flights. This seemed to make sense. Cutting across the magnetic lines of force was harder on the energy field than moving parallel to them. The diffused shock in the body was the "cellular memory" of the physical vibrations generated by the huge jet engines during flight. These two components, the "magnetic burn" and the "cellular memory," seemed to account for almost 95% of the difference between a normal persons condition and the jet lag sufferer. I asked myself, how could these problems be prevented?

When I started out, I had no idea how to prevent jet lag. A few years later I stumbled into the information concerning ELF magnetic pulse generators and decided to look into it. All of the pulsers that I have worked with do reduce jet lag symptoms considerably. They also had the other problems I have mentioned previously. I wanted to develop a whole new system to solve these problems.

THE JLN-100 AS A JET LAG NEUTRALIZER

The JLN-100 eliminates or reduces most of the debilitating effects of jet lag. A jet traveller who has used the JLN-100 does not have any "magnetic burn" in the aura or residual "cellular memory" of the physical vibrations of the plane. Exactly why this is so I cannot say. The brain wave entrainment effect could not explain these other effects satisfactorily. These ELF pacers seem to have a number of other fundamental normalizing effects on the living organism besides controlling neuron firings. Just exactly what these units do will take many years to fully determine. In the meantime, it is good to know that jet lag is for the most part a thing of the past. So, with the major components of jet lag eliminated, the other psychological effects and time zone changes are easier to handle, as well.

MORE WORK TO BE DONE

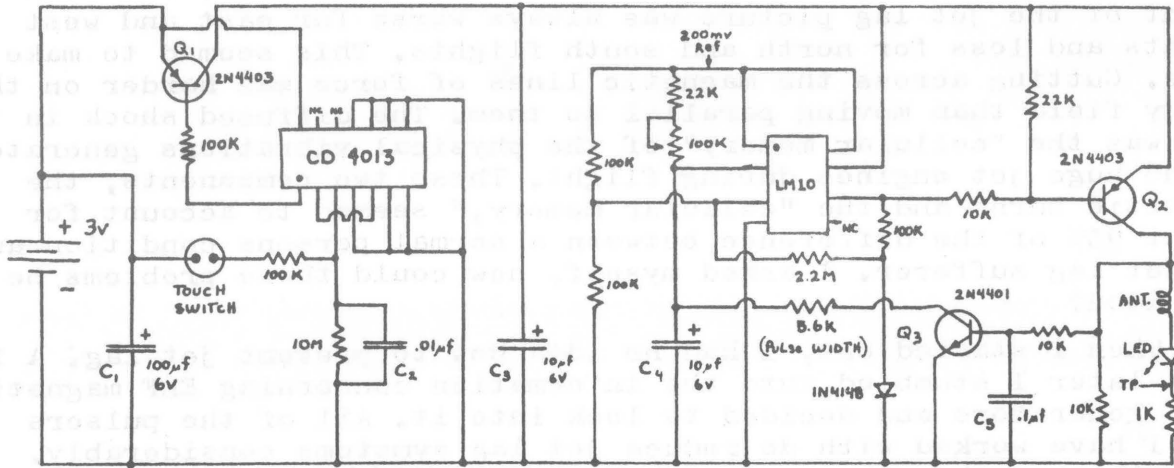
This field of research is wide open and much more work needs to be done. It would be great if someone could figure out how to directly measure the field effect generated by my new antenna. I encourage anyone with an interest in this field to try some experiments of your own. It took me a year to develop the JLN-100. I hope my work can inspire and maybe point the way to even greater discoveries.

The JLN-100 is available now. It is calibrated at 7.83 HZ but can be set for any frequency between 3 HZ and 25 HZ. The five frequency JLN-Multiplex is also available. The settings on that are: 4.9 HZ - Theta rhythm, 7.83 - earth resonance, 9.26 HZ - deep Alpha, 10.5 HZ - Alpha rhythm and 14.0 - a Beta rhythm. Prices are \$100 and \$150 respectively, available through Borderland Headquarters.

For all you DO-IT-YOURSELFers, here's the schematic and parts list of the JLN-100. GOOD LUCK!!

Schematic Diagram:

DRAWING BY:
Peter A. Lindemann



Voltage Stabilized Oscillator with touch sensitive switch for the JLN-100

CIRCUIT DESIGN BY:
ROGER A. MODJESKI
APRIL 12, 1985

PARTS LIST:

C ₁	100mf	1 diode 1N4148	1 twin 'AAA' battery holder
C ₂	.01mf	1 LED	2 'AAA' batteries
C ₃	10mf	1 Trim Pot 100K	#22 wire, solder, flux solvent
C ₄	10mf (20%)	½ watt resistors	super glue
C ₅	.1mf	5 100K	
		3 10K	
Q ₁	2N4403	2 22K	
Q ₂	2N4403	1 10M	
Q ₃	2N4401	1 2.2M	
		1 5.6K	
IC ₁	CD4013	1 1K	
IC ₂	LM10CLN	case, screws, etc.	Assembly time is approximately 1½ to 2 hours.]

The touch switch can be any momentary contact switch or simply two electrodes in close proximity to each other that can be touched simultaneously with your finger. The units I sell use two rounded head brass tacks ¼ inch apart.

THE SECOND CHANCE
by Albert Zock

Gone with the wind are Dr. Ruth Drown's contributions to the medical science in the thirties. As a student and co-worker of the Dr. Albert Abrams, M.D., of San Francisco, she invented the Radio-Vision Instrument which could be used to diagnose a patient's malady from only a drop of blood. This was based on the theory that the crystals within the blood acted like a Galena crystal in an old radio set, having and giving all information needed for diagnosis. The medical profession in her day laughed at this because it was too simple. Today, they are again confronted with a similarly simple phenomenon.

PICTURES IN THE BLOOD

Mrs. Hannelore Auras-Blanck, assistant to her husband Dr. Karlheinz Blanck in Germany, found a new and suprisingly accurate method of diagnosing complaints, long before they can be detected with methods used today. Almost from the beginning when she started to examine blood samples under a microscope, Mrs. Auras-Blanck noted a repeating of certain outlines within the blood picture of a patient which disappeared when the patient got well again. This phenomenon made her think. Did these contours have a meaning? To satisfy her curiosity, she improved the technique for bringing out the picture more clearly by adding a dye, the formula she has kept secret up to now. With this new process, she successfully diagnosed over 3,000 patients within 20 years.

The Auras-Copy, as it is called, has an accuracy of 90%, it not only puts a new and better tool in the hand of a physician, it can revolutionize the whole medical approach. The method is simple. Three to four drops of blood are treated and spread over the entire surface of a small glass plate, allowed to dry and fixed with alcohol. After that, Mrs. Auras-Blanck puts a dye on top of it. However, Mrs. Auras-Blanck noticed particular outlines at the beginning of her work, at a time when she was not using a dye, which means it should be visible even without knowing her formula.

DIAGNOSIS VIA CRYSTALIZATION

The examination was done under a microscope with a magnification of 1,000 times. Suprisingly, blood pictures will show outlines of inner organs and injured or affected body parts on this narrow glass surface, measuring only a few centimeters. When the narrow glass plate lies crosswise to the observer as is usual, the top of the long side corresponds to the head, eyes, nose, mouth, etc. and the bottom of it represents the legs, feet and abdomen; the short edges represent the left and right sides of the body. An outline of an organ within the topographical plane means it needs attention.

A second phenomena is the size of the outline: the larger it is, the more diseased is the organ, and surrounding area. Since the blood smear always gives a holistic view of the body's condition, a physician can at any time observe the degree of sickness or progress in healing. But that's not all! According to Mrs. Auras-Blanck, a Auras-Copy tells what lies ahead up to four months in advance. For example;

in one case, the Auras-Copy diagnosed thrombosis in the right thigh of a patient which was clinically proven four months later. In an other instance, Mrs. Auras-Blanck diagnosed a cancer seven years prior to its outbreak, at a time when the patient was still healthy. Because of her experience, Mrs. Auras-Blanck can diagnose cancerous conditions even in a blood smear without the addition of dye.

SIGNS AND SYMBOLS

Besides organs, there can be other signs and symbols appearing in certain locations, or over the whole body picture. Initially, Mrs. Auras-Blanck did not know whether or not they had any meaning. Then she got a hunch, that this might be pointing to disturbances in that region. After patient observations, her hunch proved to be right. A reddening around a trouble spot caused by the increase of erythrocytes (red blood corpuscles) shows the grade of an infection, which disappears when the condition improves. It is well known that a hyperactive thyroid gland often causes stomach disorders, but the Auras technique of diagnosing makes it visible for the first time, showing not only the shape of the stomach, but the nerves within the surrounding area, and the thyroid, since they are involved as well. An abdomen disturbance will give a similar picture. Beside the symbols of the affected organs, the outline of the thyroid appears also. The interpretation of the symbols is founded on Mrs. Auras-Blanck's 20 years of practice. This method can save a physician time and errors since the holistic diagnosis will give him an indication of how the applied remedy is working.

During the long years of experimentation, Mrs. Auras-Blanck and her husband tried to be as scientific as possible. She never knew more than the name of the patient until all treatments were completed. Even though her method of diagnosis has been tried curing these 20 years on over 3,000 patients, and proven to be 90% accurate, Mrs. Auras-Blanck is still reluctant to meet the public. A few reports have been published, but she feels the time is not ripe yet, because for one thing it represents a massive provocation of orthodox medicine, and secondly, her whole work could be jeopardized through the errors or negligence of a physician. Mrs. Auras-Blanck prefers to progress slowly by getting more and more earnest physicians interested in trying the method on their patients, letting her do the evaluation of the blood smears, until others have learned to do it as well as she. In this way the risk is minimized. Furthermore, her experience with physicians so far has shown, that many of them refuse to accept the outlines of organs and symbols of the blood picture even though this can be seen on photos as well. This rejection is mostly a psychological one, a subconscious fear of becoming useless, which is of course unfounded.

Mrs. Auras-Blanck foresees some difficulty in teaching others to read the symbols as she considers this to be the hardest part of the technique. As for a new illness she only needs to examine 3 to 5 cases to find the meaning of a new configuration, but a neophyte would of course lack the prerequisite expertise. A person capable of processing blood samples can acquire this skill; no psychic ability is involved, it is only a question of time and accuracy. The only mystery is why and how these miniature pictures of organs appear at all? Other difficulties are the high price of optical equipment, and the lack of

reliable co-workers. Since she doesn't have the necessary funds to hire assistants, her husband is the only help she has. The Auras-Copy may pose a challenge to the physician of today, yet it should be accepted as it puts a new tool in his hand, capable of both lightening his task and stretching his capabilities, as well as drying many tears. Will the medical profession grasp this opportunity, or will they reject it as before and continue to sleep on their laurels.

Yet the possibilities inferred by the Auras-Copy should not come as a surprise to practitioners who have witnessed the development of DNA research. This phenomenon is only another example of nature's holistic way and should not surprise us as it is known that each cell carries a blueprint which enables it not only to duplicate itself, but to build a whole new body from whence it came.

Mysterious Rays from Human Eye Move Solenoid

WILL science soon reveal the nature of a mysterious power of the human eye more amazing than sight itself?

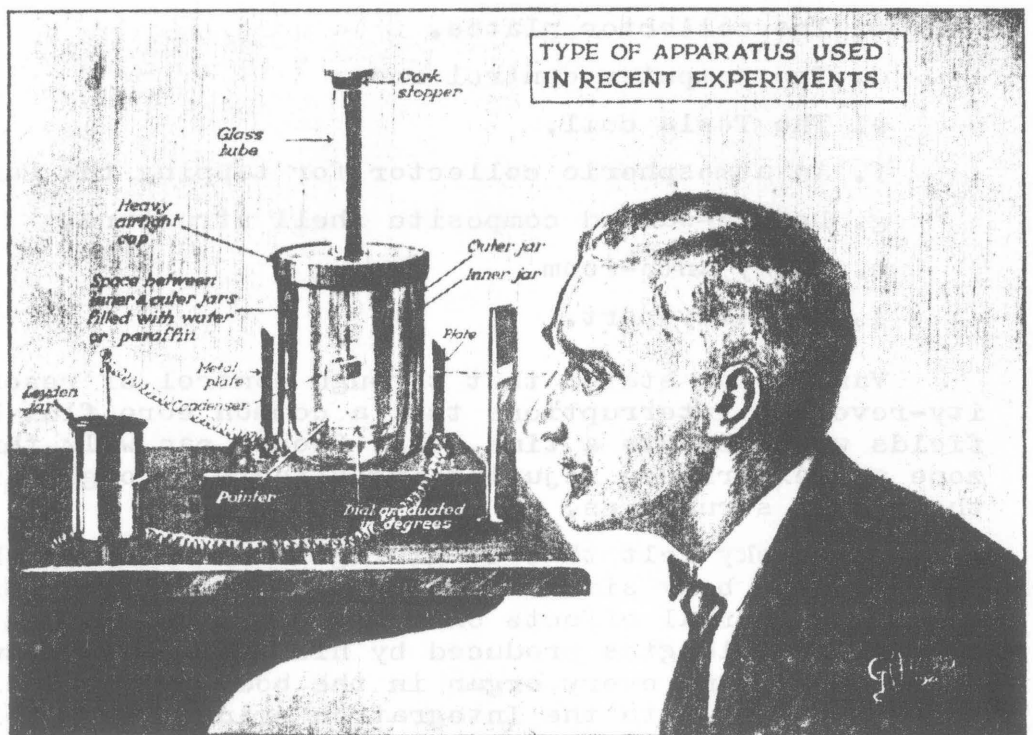
Probably every one has experienced an almost intolerable sensation under the prolonged stare of another person's eyes. If one person looks into another person's eyes, one of them must at last avert his gaze.

Dr. Charles Russ, an eminent British bacteriologist, has constructed a device which he believes conclusively proves that the human eye possesses an invisible energy, powerful enough to move objects.

A delicate solenoid of fine copper wire wound on a celluloid cylinder is suspended from an unspun silk fiber fourteen inches long. The upper end of the silk is attached to a cork placed in the end of a long glass tube and the lower end is fastened in a metal yoke near a small electromagnet. The object is to bring the solenoid to rest after it has been set in motion.

The entire system is enclosed in a double glass jar, covered with metal leaf. The space between the jars is filled with water or paraffin lest the bodily heat of the experimenter should influence the result.

On each side of the vessel the metal coating is scraped from one small spot. These openings are faced by insulated metal plates connected with a Leyden jar, which places an electrical potential



© Modern Publishing Company

Drawing by G. H. Davis

Dr. Russ's apparatus consists of a double glass jar containing a solenoid that is free to turn when the vision is directed through the slit

across the air space inside the double vessel. Another opening is made for the eye.

If the experimenter looks at one end of the solenoid as soon as the plates are charged, it will turn away from him, says Dr. Russ. If he looks at the other end, that end will move away. No motion results if the eyes rest on the center. To enable the observer to more easily watch the effect, a pointer hung

from the solenoid moves over a dial graduated in degrees.

Dr. Russ believes there is a ray of force propelled from the eye in the act of vision, which produces a tiny electric charge on the swinging solenoid. Of the nature of this energy he is not certain, although, since no effect is obtained in the dark, he thinks that the "emanation" is a refraction or a concentration of some unknown ray in light.

INTEGRATRON II

by William F. Hamilton III

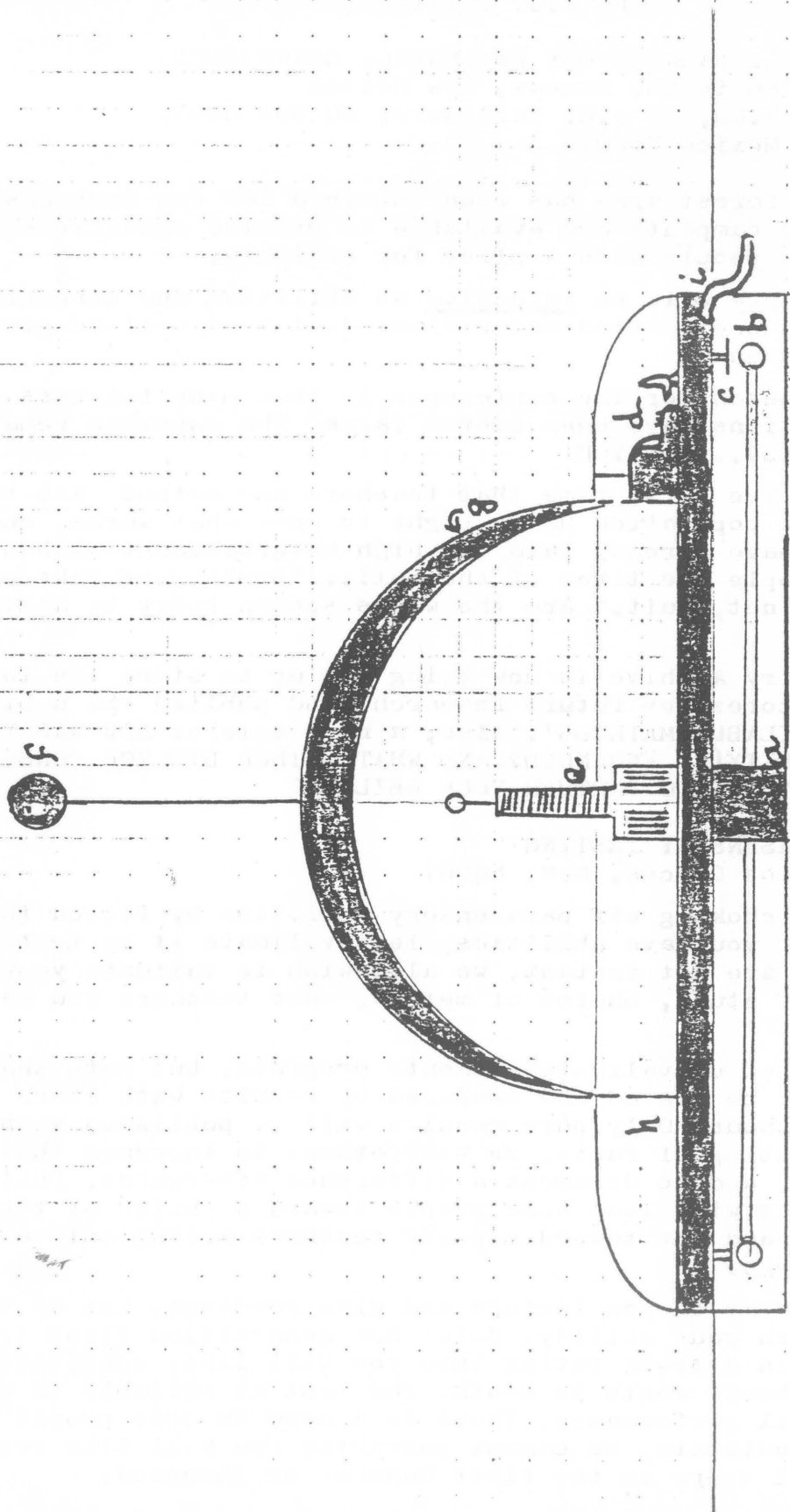
Since George Van Tassel left little in the way of specific technical data on the Integratron and the blueprint of its design and operation, much has to be gleaned from his published writings. The basic principle of the machine is related to the interaction of electrostatic fields and magnetic waves based on the works of Lakhovsky and Tesla in the main.

The following is a component description of a new computer-controlled Integratron designed to carry out experiments with time and cell regeneration:

- a. The electrostatic drive motor.
- b. The generator rotor configuration.
- c. The collector plates.
- d. The computer control room.
- e. The Tesla coil.
- f. An atmospheric collector for tapping the Earth's potential.
- g. Double-walled composite shell structure.
- h. Entry ante-room
- i. Humidity port.

Van Tassel stated that through control of resonance and polarity-reversal interruptions that a common core flux between resonant fields would create a time zone. People can walk through this time zone and experience rejuvenating effects through direct action on their cell structures.

Lakhovsky felt that by giving an oscillatory shock to all the cells of the body simultaneously via damped electrostatic waves, injurious thermal effects on cells could be avoided and all of the multiple wavelengths produced by his device would tune every cell, every nerve, and every organ in the body. Van Tassel went further in this theory with the Integratron principle. Model II of my design improves on the original Integratron in a number of ways. First, with today's processes and materials, we do not need to construct a dome out of wood. Instead it can be constructed from some of the new composite materials which are united into shape. The generator itself can be housed under the ground in an insulated housing and be driven mainly by the Earth's own electrostatic gradient. With today's computers and process control systems, a fine regulation of system operation can be achieved. Perhaps models can be constructed for experiments in order to derive some specific operational measurements.



COMPUTERIZED INTEGRATION II'

William F. Hamilton III
10/8/84

PARASENSORY TESTING
by J.G. Gallimore

THE FIRST NATIONAL PARASENSORY EVALUATION CONFERENCE
Coming August 1986 in Los Cruces, New Mexico
Registration \$218.00, to J.G. Gallimore, PO Box 6265,
Los Cruces, New Mexico 88001

A National Forest area has been obtained for ten inexpensive days. Cabins and campouts are available to provide sensitives and other interested people with a place for solitude.

The conference will be intensive as abilities and screening methods are discussed, tried and evaluated. A test will be given to each in attendance.

The main reason for the conference is that many teachers and types of meditations have been proven false. The question remains: WHAT METHOD WORKS?....ON YOU!

It will be the first time that teachers and methods are tested for results. The population has a right to know what works, and what does not. Many have already paid for high advertisement without results, and people are tired of the bull..."Don't just take up my time, TEACH! If not, quit." are the words spoken today by almost all people.

A Parasensory Archive is now being set up to store the individual test scores for future research, and publish the unbiased testing of 'AVAILABLE METHODS'. Also, a need exists: HOW WAS YOUR OWN NATURAL ABILITY(\$) ENHANCED? AND WHAT METHOD DID YOU CONSCIOUSLY OR UNCONSCIOUSLY USE TO FURTHER YOUR ABILITY?

ARCHIVES OF PARASENSORY TESTING
P.O. Box 6265, Los Cruces, N.M. 88001

Society is choking off parasensory abilities by forced thinking patterns. If you have abilities, lets validate it by testing. Since abilities are not instant, we also wish to validate your private means of study, choice of method, what teachers you have had, etc.

Teachers: Let us validate students progress, but note that your method will be listed and compared by results with other teachers and methods. Only pure results will be published without any bias or twisting of facts. We WANT others to increase their innate abilities, and to document a difference afterwards. Publication of results will lead some people toward a choice of top ranking schools and not toward rip-off teachers acting only as figureheads of ego.

Psychics: Some of you lecture and give readings. Let us validate and publish your ability. Note: Our generalized first test will score you in a lower rating than you will like. Sensitives change hour to hour, month to month. The test is reliable in determining overall performance. There is a need in some people to be the best immediately. We cannot guarantee you will like results, or that you will score in the first hundred or thousand.

Sensitives, Researchers, and students: The top one hundred and one thousand will be published at least twice yearly by ability, name or psuedo name, or a numerical code depending on date of arrival of results. Some may wish their identity kept confidential and we will do so without question.

Conference: A conference is being planned for the 1986 year in New Mexico. It is an invitation open conference with a planned one thousand sensitives. Speakers are needed and on different aspects of sensitivity.

How do I take the test? The following pages define a condensed but complete test. Get out extra sheets of paper and answer each question which applies to you or your experience. Write so others can READ your answers. A value is given to each question, so please be complete. A value is also given for the honesty of a person answering "NO experience with this." as the test covers different abilities for different people.

Finish the test and look over your answers. Mail it with eighteen dollars (which is a yearly fee) to:

J.G. Gallimore,
POB 6265, Los Cruces NM 88001

An answer will be forwarded to each as to the total score which will be less than one thousand points. You may have to wait to find out whether you have made the top thousand. The fee charged is for time and costs, publications and paid help. Also, an emergency phone service is being planned as a hotling for sudden sensitive problems. Who has an exorcist on tap when one is really needed? Other problems exist which are just as necessary. Willing help from the top one hundred may be asked for as specialized problems arise. No one is obligated to volunteer, but some people have specialized abilities which may just help someone else in an hour of need.

Now, on to the test. Good luck!

SELECTIVE TEST FOR SENSITIVES

Circle definite yes numbers, write in maybe, leave NO questions blank.

- A. I have had a few personal experiences, but do not consider myself psychic, sensitive, or any of the other names for paranormal sensitivity.
- B. My experiences are often, and a way of life.
- C. I feel or sense others when there is a need.
- D. I feel more secure with soil, trees and animals than people.
- E. I am empathic (feelings of others).
- F. I can feel certain pains of others.
- G. I see or sense an aura around others, that reveals to my inner senses information about them.
- H. I can feel/hear the m nd of another calling for help.
- I. I feel/sense the life force of others.

- J. I have healed others without any hope of a favor returned.
- K. I feel the love of others, and enjoy being in their company.
- L. I have hidden my natural abilities for fear of being found different, or just plain found out.
- M. I am seeking for something without name that is in the sensitive area.
- N. I have talked at least once to my superconscious, which has answered and advised me what to do about a problem.
- O. I have had conversations with the subconscious.
- P. I have altered the weight of something by lifting it.
- Q. I have met people with higher powers in dreams.
- R. I sometimes feel a surcharge of energy run through me.
- S. I sometimes feel whole, and other times feel fragmented.
- T. I long to really release my abilities, for whatever reason.

PARASENSORY TEST

1. Do you have a religious affiliation? (or preference?)
2. Do you consider yourself a sensitive as opposed to someone who has had a few parasensitive experiences?
3. Write no more than three sentences describing your very first parasensory experience. (and when it took place.)
4. Have you ever used aids such as pendulums, Radionic instruments, crystals, spirit boards, cards? define which, how? why?
5. Have you experienced out-of-body travel? at what ages? and how often or how many times in your life?
6. Have you experienced clinical death? define.
7. Do you believe in reincarnation?
8. Have you ever experienced a past life? define.
9. Have you ever fallen into a trance? if so, were you immobile or incapable of moving your body?
10. Would you describe yourself as a hearing person, seeing person or feeling person as regards sensitive abilities?
11. Would you make another class in question 10? if so, what?
12. How much work or time have you expended in developing your abilities? in hours, days, weeks, years?
13. Was your development private or with someone else's help?
14. What courses have you taken? (for ESP)
15. What teacher most helped you? (if any)
16. Is there any pattern of 'when' you are sensitive in any way?
17. Have you yourself been a teacher of the paranormal?
18. Have you ever attended out-of-body classes in instruction of anything? define when and what subject.

19. Have you ever met a super-conscious being? or more than one?
20. Have you ever seen a flying saucer? more than one?
21. Have you ever met a spaceman?
22. Have you ever heard the Sun talk?
23. Have you tried different drugs for awareness?
24. Have you ever controlled another person by para-abilities?
25. Have you ever felt different or inhibited because you were different? (sensitive)
26. Have you ever quit using an ability because of others? or from a fear of being different, or of hurting others?
27. Has your presence ever induced a trance in others by you simply being in the room?
28. Are you considered 'flakey' or 'strange', and are you?
29. Have you hurt others by parasensory abilities?
30. Have you killed by para-abilities?
31. Have you experienced psychic attacks?
32. Could you defend yourself? define how.
33. Have you ever moved an object by mind power?
34. Have you ever levitated? (suspended yourself in the air)
35. Have you ever seen an unusual animal, or a normal animal which talked?
36. Have you ever seen objects that glowed with an inner light?
37. Have you ever seen animals or objects change form to something else?
38. When was your last para-normal experience? (how long ago?)
39. Are you considered intelligent by others? By yourself?
40. Have you ever seen auras around people?
41. Have you ever mind-talked with others? More than once? How would you rate your own ability?
42. Are you a dowser? or able to dowse by any method?
43. Have you ever been healed by another using paranormal energy?
44. Have you ever tried to heal another?
45. In 44, were you successful? more than once?
46. Have you ever heard voices from people that were not there.
47. Did voices ever tell you to do anything? explain.
48. Have you ever had a pyramid experience?
49. Have you ever had a Biblical experience?
50. Have you ever seen God or Jesus?
51. Have you ever sat on a power spot on the earth? (or stood?)
52. In 51, how was it located?

53. Can you tell if other people are para-sensitive?
54. Do you use para-normal abilities in choosing friends?
55. Do you have any experience in witchcraft?
56. Can you, or have you drawn wild animals to you?
57. Can you handle rattlesnakes without holding their head?
58. Have you ever walked on fire or a bed of coals?
59. Have you ever seen a ghost?
60. Have you ever seen a demon?
61. Have you ever acted as an exorcist? or talked to a ghost?
62. Have you ever smelled a stench from hell?
63. Have you ever felt sensitive to plants or known abilities to use them in which you were never taught?
64. Have you ever seen a paranormal light?
65. Have you ever seen animals or people from another time?
66. Are there any para-normal abilities that you use in everyday life? define.
67. Have you ever seen possession? or yourself experienced it?
68. Did you ever attempt to establish a feedback system with your subconscious and superconscious? successful?
69. Did in 68, either ever talk to you by voice?
70. Have you ever been tested by Rhine cards? How did you do?
71. Have you ever suffered damage from a psychic attack?
72. Have you ever teleported or moved your body to another location?
73. Have you ever experienced epilepsy?
74. Have you ever experienced time distortions?
75. Did you ever have an out-of-body teacher?
76. Have you ever made an object appear that was not there before?
77. Have you ever seen a Deva or little energy person?
78. Have you ever found a power object?
79. Have you ever created a thought form?
80. Have you ever seen white or black spheres of intelligence?
81. Have you ever experienced a rush of energy up the backbone that ran to the top of the head and altered perception?
82. Have you ever entered another dimension?
83. Have you ever had an initiation -- out of body?
84. Have you ever suddenly spoke in another language?
85. Did you ever experience metal or other objects twisting or bending in your presence?
86. Did you ever affect electrical circuits or appliances?

- 87. Did you ever induce energy into an object or fluid and have it change? explain.
- 88. Do you use a meditation? a technique? (to enhance ability)
- 89. Do you have another experience not covered here? define.

The test is finished. You may think it unfair or incomplete as single talents were not evaluated in depth. We have found that one talent developed automatically calls forth others as the person advances in sensitivity. By now your main ability is known and a second test may be provided later to explore the depth of that one single ability. Considering that at least twenty-seven different paranormal abilities are known, we think the all-inclusive test to be the most valuable.

You experience over years can be summed quite easily along with effort expended to get where you are today. That is the intent of this test. Since your mood swing and sensitivity changes daily, we cannot be accurate without repeated testing on one single ability, or possibly compare it with another person. Your remembered experiences are reliable tracks you have left in your history, and that can be summed.

We need a truthful response to the former questions to establish where you are today. And that.... is the reason for the test. A built in lie detector is inherent because some talents beget other specified talents. Pick the wrong ones and see what our return letter says.

Last. Do you want your name published?

Please photocopy the test and send it to a friend!

Sincerely,
J.G. Gallimore

* * * * *

"There slumber in every human being faculties by means of which he can acquire for himself a knowledge of higher worlds. Mystics, Gnostics, Theosophists - all speak of a world of soul and spirit which for them is just as real as the world we see with our physical eyes and touch with our physical hands. At every moment the listener may say to himself: that, of which they speak, I too can learn, if I develop within myself certain powers which today still slumber within me. There remains only one question - how to set to work to develop such faculties. For this purpose, they only can give advice who already possess such powers. As long as the human race has existed there has always been a method of training, in the course of which individuals possessing these higher faculties gave instruction to others who were in search of them."

Rudolph Steiner, from 'KNOWLEDGE OF THE HIGHER WORLDS AND ITS ATTAINMENT.'

CLIPS, QUOTES & COMMENTS —

"ALL POLLUTION IN THE WORLD TODAY COMES FROM THE MIND OF MODERN MAN."
Rolling Thunder

Our world is dying and no plans are in sight to stop the huge amounts of waste generated by our 'do-it-now' society. Eat a burger and throw away the bag. Plastic containers? Why just use them once and they'll float in the ocean forever. Not to mention the garbage in the food! Most Americans are more concerned with the make-believe lives on TV than they are with the nemesis waves that are toppling our earth-detrimental society. Viral yuppie-tecture sprouts like a cancer across what is left of natural areas. Garbage pervades our air, circles our cities and saturates our waters. One third of all Americans will die of cancer, and fast food use is on the rise. We are polluted in body, mind and spirit. How will it all end?

If we, as a planetary life wave, are concerned with advancement, we must realize that no advancement will come unless we all take responsibility for our actions. Reliance on authority is a useless path taken by most. Either time will supposedly mold us into a world government or some divine entity will spew forth from the sky and save us all. I don't believe that it is that easy. We must begin with ourselves. Internal cleansing, living food and life oriented thought and action are essential. External sources may guide, but the truth will come only from within. No one will save you but yourself, linked in truth and in the clear light of the Creator.

THE INNER SMILE

"The complexity of global problems can be so overwhelming that most people simply give up trying to understand the whole picture of their life. Our heads reel from an overload of information that spews out from television, newspaper, radio and computers. The challenge is to simplify all this information into digestible form. This process of literally 'digesting' reality is made difficult to the extent that we've separated our minds from our bodies.

"If the body is healthy, it can easily assimilate the stress of modern living and even find it a creative challenge. But many people ignore their natural balancing mechanisms between the body and mind. They attempt to digest the world with their minds, piling up concepts, thoughts, and desires like giant mounds of mental garbage.

"Have you ever walked down the street grumbling or worrying about things you have to do, your relationships, your job, your whole life? When you glance up someone smiles at you, and before you know it you are smiling back. In only a split-second you've dropped your troubles, you stand up a little straighter, and walk on knowing everything is going to be okay. A genuine smile has tremendous power.

"Why, for instance, if a smile is associated with health, aren't there doctors who specialize in smiling? If Saturday Review editor,

Norman Cousins, used old Marx Brothers films to laugh away his rare connective disease, then why can't doctors and nurses use smiling energy to help heal their patients? Perhaps our hospitals should hire clowns and jesters to make their patients smile. More important, why hasn't smiling been used as preventive medicine? In smiling at our friends, families and loved ones, why have we not learned to smile to ourselves?

"In ancient China, the Taoists taught that a constant inner smile, a smile to oneself, insured health, happiness, and longevity. Why? Smiling to yourself is like basking in love: you become your own best friend. Living with an inner smile is to live in harmony with yourself.

"One look at our western society shows that we do not know the secret of smiling. The lack of Harmony within ourselves is tragically apparent. We are plagued with an increase in physical and emotional illness that ranges from cancer to anorexia nervosa. Our loves are always shadowed by a world filled with violence and self-destruction. Both the individual and the collective society are threatened by rampant drug abuse and nuclear waste. Somehow, somewhere, we've lost sight of the Tao. We've broken the natural flow of life, and with it the power to heal ourselves."

Quoted from AWAKEN HEALING ENERGY THROUGH THE TAO by Mantak Chia. (\$10.95, Aurora Press, 205 Third Ave. 2A, New York, NY 10003). This book is an important addition to the literature on meditation. To many people, meditation consists of stopping thought or visualizing light around the body. These are steps along the way, but rarely can one find a book such as Mantak Chia's to truly show the inner way. The chakras can be seen as just a portion of the entire system of internal circuitry. I have searched through Taoist texts, Kung Fu books, etc. searching for this system that I felt rudiments of in various available literature, and now Mr. Chia has put it all together in a clear volume (first of a series). Certainly something to smile about!

EDITOR-AT-LARGE

Riley Hansard Crabb has settled down in New Zealand while on a round-the-world journey. He has married down there and has found his happiness. We all wish him well on his path and we welcome the help that he is still giving. Riley sends us the most interesting newspaper clips from down under, and is always available for an honest opinion. In light of his work here for 26 years and his sincere interest in the future of the Foundation he is now our Editor-At-Large, a function he is sure use productively to all our benefits.

I have gotten much response while taking over here from Riley. Several people have pointed out that after all those years of work he should have had more of a mention or tribute. I quite agree, but I acquiesced to Riley's wishes of a short mention. I hope to get some articles from him in the future and perhaps more on his work. His viewpoint is still most informative because he looks into the occult (hidden) forces that make up this phenomenon we term reality. Riley will be with us for a while, of that I'm certain. He is all smiles both inner and outer. For his many friends who wish to contact him: Riley Crabb; 2/16 Tamariki; Orewa, Hibiscus Coast; NEW ZEALAND. Wish him and his new wife Phyllis all the best!

AN EXPLANATION

In the last issue I mentioned that I had changed my name to Thomas Maxwell Thompson. Well I did for a while but now realize that it was a false path and now go by my birth name of Tom Brown. I changed it for several reasons. For one, I wanted to become an underground writer pointing out the criminal aspects of our sciences and religions. When I took the name I didn't know that I would soon be in the spotlight, giving lectures, editing this journal and such tasks. I may still write under that name and also use it for a cover for other writers who want to tell the truth but don't want the violent reaction that sometimes accompany truth telling.

Secondly, I wanted to see what kind of a change in consciousness I could manufacture by becoming another person. The change did me good. I took over Borderland and am now doing what I enjoy most - reading, writing and publishing. Along with the beneficial results I also experienced detrimental effects - confusion, misunderstanding, sleeplessness over identity, etc. All in all I found it a worthwhile experiment in ego consciousness and I'm glad that its over.

The spiritual path teaches that one must transcend the ego. Jesus taught this, though one would never know it by reading modern translations of his ideas. Buddha taught this, though Buddha is now worshipped as a god, as is Jesus. The Christ-Buddha level of consciousness is something to be experienced within, not some entity from without. Read this and learn. This is the error behind religious thought. The truth can be found by one's self but spiritual guides such as Jesus, Buddha, Krishna, etc. are an essential part of the path. We need teachers, not saviours. The guru imparts more than words, the radionic interaction of chackra systems between guru and chela is where the true information flows. We can look at this as initiation physics and will probe this phenomenon in the future.

COSMIC HUMANISM

We have just been donated a copy of Oliver Reiser's book, COSMIC HUMANISM. I have not had time to go through it yet but a brief scan shows it to be quite a tome covering philosophies from Plato to Fuller. More than a philosophical treatise this book appears to be a metaphysical masterpiece covering practical applications of advanced viewpoints. Multi-dimensional universe construction is charted out in an eight dimensional graph and our human life-wave's path along this graph is studied.

"Dr. Oliver L. Reiser's view of the role of philosophy in the modern world of fragmented culture and ideals is 'based on the conviction that the overarching need in our world is for a far-reaching synthesis of knowledge and action which shall provide a world view, an integrated synthesis of man and society, to act as a guiding field for human evolution.' Reiser's answer to those who question the place of philosophy in modern society is 'the historic one of Plato: Philosophy should provide wisdom, synoptic vision, and guidance. It is all the more necessary to restore philosophy to this definitive role because wisdom is so lacking in our modern world.' Philosophy must be more than an abstract, removed system but 'a way of life, as the Greeks and Romans thought of philosophy. We need to recapture that attitude and outlook - especially since the traditional religions of the world

are no longer instruments of social control and moral guidance.'" From the liner notes in Cosmic Humanism. This out-of-print book is available for \$65 (marked down from \$100) from Steven Patascher, Ph.D., 3202 N. 67th Place, Scottsdale, Arizona 85251.

THE LIGHT BULB

If you are an active Borderland Researcher and have a project that you want protected then you should contact the Inventor's Workshop International Educational Foundation, P.O. Box 251, Tarzana, CA 91356. The IWIEF is a non-profit membership organization crusading for the rights of inventors. It is the largest and most dynamic of the ethical invention companies in this country and perhaps the world. The IWIEF helps and guides the individual inventor in the development of his product from idea inception to the market ready stage. Services include invention analysis, patent searches, meetings and expositions, and a bi-monthly magazine titled THE LIGHTBULB which keeps the members informed of current information on obtaining patents and licensing and marketing of new products.

THE BARAN PAPERS

Michael Baran, author of ATLANTIS RECONSIDERED, INSIGHTS INTO PREHISTORY and TWILIGHT OF THE GODS has just released his newest book entitled THE BARAN PAPERS. In this book he presents a groundbreaking scientific model, able to deal rationally with diverse phenomenologic mysteries: spontaneous human combustion; the Kirlian "phantom leaf" effect; psychotronic energy themes, including Tesla devices, "pyramid energy," and psychic phenomena; Time and gravitation, including its possible role in all the above. Dr. Baran's study of sources he believes pertain to ancient catastrophism (including the writings of the late Immanuel Velikovsky) and "lost lands" has led to new perspectives about energy-systems deep in the earth. The general energy-model derived from these concepts fits a very wide range of phenomena. The book is \$4.00 plus \$1.00 postage and handling (.50¢ for each additional copy) from - The Baran Papers, 89 Mass. Ave, Suite 292, Boston MA 02115.

SHAVERTRON

I first noticed the work of Michael Baran in a small, but quite interesting, magazine - Shavertron, edited by Richard Toronto. This publication is a hollow earth oriented magazine based on the works of Richard Shaver, a man who supposedly ventured into the inner earth and brought out some ancient knowledge. Shaver's works appeared as fiction in AMAZING STORIES in the 1940's and early 50's. He then announced that the stories were true, and came from the racial memory of man. While hard to swallow as a whole, the mystery has some intriguing facets and I certainly agree with its general tendencies. Recent articles came from early BSRF Journals (then titled Round Robin) and concerned themselves with serious aspects of the Shaver Mystery. Don't expect the whole magazine to be serious, but it has clips from newspapers around the world and usually has some very interesting articles. Certainly a must for hollow earth researchers. SHAVERTRON is \$9.00 a year (3 issues, check payable to R. Toronto) and can be gotten from Rich Toronto, PO Box 248, Vallejo, CA 94590. Back issues are available.

AUTHORITIES

"What do they want for proof? There is no proof. There are no authorities whatever. No President, Academy, Court of Law, Congress or Senate on this earth has the knowledge or power to decide what will be the knowledge of tomorrow. There is no use in trying to prove something that is unknown to somebody who is ignorant of the unknown, or fearful of its threatening power. Only the good, old rules of learning will eventually bring about understanding of what has invaded our earthly existence. Let those who are ignorant of the ways of learning stand aside, while those who know what learning is, blaze the trail into the unknown.

"Quest for knowledge is Supreme Human Activity.

"Nothing but the rules of learning can or should ever govern it."

Wilhelm Reich, April 1956

INNER CIRCLE

"Helpful and promising data from any source should never be rejected a priori through prejudice and ignorance." Meade Layne

In the mid 1940's Mark Probert came to Meade Layne for help in understanding the phenomena of various voices speaking through Mark while sleeping. Being an active researcher Meade began to question the voices and the first contact with the Inner Circle was begun. The Inner Circle provided Meade with the Mat and Demat explanation of Ether Ships (later called UFOs), an explanation that BSRF stands behind till this day.

While mediumship is not my forte, I find it a useful tool if one does not judge information by where it comes from but by how useful it is. Riley Crabb helped put together 43 brochures of transcripts of the Inner Circle. Presently it is not feasible for BSRF to keep the Inner Circle material in print. I am looking for a group or church who is interested in carrying on the publication of these deep trance transcripts. BSRF will donate what material we can to those who are seriously interested in this material. We will then forward any requests for the material to them. Contact Borderland headquarters if you are interested or know someone who is.

KARMA, THE GREAT TEACHER

At present we do not have the human resources to review all the material that comes into Borderland headquarters, but I will try to mention what I can so that you can look into some of these things yourself. Two very interesting books have come to us from the Religious Research Foundation of America (Box 208, Grand Island, FL 32735). The first is "CROSS-CORRESPONDENCE AMONG THE LOEHR-DANIELS LIFE READINGS, by Horton W. Amidon. It is listed as a "factual, mathematical, scientific research of the awesome cross-check verification of the largest body of Life Readings in the world." The other is KARMA, THE GREAT TEACHER by Dr. Helen Roberts. This book is sub-titled 'Reincarnation - What it is - Why it is - How it works.' It contains more than 100 Illustration-Excerpts from the Loehr-Daniels life readings. "In my judgement, KARMA, THE GREAT TEACHER is simply the best book ever written on reincarnation." Dr. Frank Dunn, President, Radio Church Associates of America.

RAYS IN PHOTOS TELL WHETHER SUBJECT LIVES

"Sensitive Device Records Emanations from Picture, Which Cease When Death Comes.

"By William Hinman, c 1933 by Universal Services, Inc.

"LONDON, Mar. 29, 1933.-Science is capable of determining from a photograph whether the subject of the snapshot has died since the picture was taken.

"Invention of an instrument which detects the movement of 'life waves' or 'Z waves' on a photographic plate, and the stillness of these waves after the death of the subject was reported today by E.S. Shrapnell-Smith, one of Britian's noted scientists.

"Shrapnell-Smith, an authority on chemistry and a government expert on transportation, said the inventor of the instrument is a German scientist, whose name is being kept secret.

"NEAR GREAT DISCOVERY

"The German, it was said, is engaged in research which has brought him to the verge of discovering the structure of the atom and a new conception of organic matter.

"Entrusted by the inventor to conduct full tests and researches regarding his sensational 'life-wave detector,' Shrapnell-Smith revealed to Universal Service (news service) that he has experimented with more than 700 photographs in tests. He said:

"Life, or specifically, the human brain, like a radio station, emits a distinct type of wave which we call the 'Z wave.'

"These human life-waves or z-waves are transmitted to and fixed in a photographic plate, just as the atomic rays of the sun alter the plate and are fixed in it."

"HAS SCIENTIFIC BASIS

"We are able to measure these life-waves. Through the instrument, these waves are amplified and become visible through their movement.

"This movement measures between a half-inch to three inches on the instrument recorder.

"While the subject of the photograph is alive, movement of the waves is lively. The moment the person dies, no matter how far distant from the photograph, the life-waves or Z-waves cease to emanate from the plate.

"I am unable to reveal at present just what the instrument consists of. But it is based and depends on first, radiation; second, magnetism; third, static electricity, and fourth, current electricity.

"There is nothing psychic or mysterious about it. It is the result of a new application of the laws of science."

Quoted from the New York American, Thursday, March 30, 1933. Thanks to associate David Marks for sending this clipping in. We are most interested in getting clippings from around the globe on subjects such as earthquakes, scientific researches that go beyond standard explanations, sea and lake monsters, UFOs, cave exploration, etc. Even if you have old clippings around we could use them in our files.

OUR NEW COVER

Associate Lawrence Blazey has put together this new cover for the Journal. It is the combined idea of myself (TB), Eric Dollard and Lawrence with Lawrence doing the artwork. Included in the design are pictures depicting areas of work that BSRF is interested in. The original pattern came from the old Electrical Experimenter table of contents page. We sent Lawrence our ideas and you can see what he sent back.

Many thanks, Larry. We highly recommend him to anyone who needs design or artwork done, be it books, business cards or stationary. He can be contacted at: 537 Juneway Drive, Bay Village, Ohio 44140.

AN OCCULT APPROACH

"The material on ELF rays, insects, and the Bimini Bulge, etc. is of great interest. I cannot help thinking that all the heavy machinery involved in these and similar researches is unnecessary. That is to say, I favour an 'occult' approach to these matters. As I see it, the gravest danger we face at present is the sudden re-activation in humanity of '3rd'-Eye activity. The comparatively recent and massive sightings of ufos, 'monsters', etc., indicate an acceleration of psychic functioning that is resulting in alarming 'appearances' & numerous 'disappearances', in the sense that certain peculiarly constituted people are being sucked behind the Tree of Life (from almost any point on it) and are straying in the Tunnels of Set. Most of them are quite unprepared to meet what they do meet, and they will eventually be flushed out of the system into the Qliphoth below Malkuth. I see this as an imminent danger for many, and there would seem to be an urgent need for sensitive individuals (sensitive, I mean, in this very limited and specialised sense) to acquaint themselves with the dangers and the techniques for dealing with these situations in the light of the magical methods evolved by Typhonian adepts who have more than a nodding acquaintance with the Tunnels. Riley Crabb was, I think, correct in seeking an occult solution to these problems, and I was pleased with his strong rebuke (Sept-Oct 1985 RR) to a correspondent who complained that the Journal was veering increasingly to the occult approach." K.G. London

Borderland Sciences has always stood behind the occult approach to explaining physical phenomenon. Meade Layne and Riley Crabb were both occultists and I myself prefer to look to the finer forces to explain the grosser. Nice minded people will not accept the truth inherent in the occult, and New Agers have made it 'groovy' and have missed the point totally! In my studies I have found a link between the Western Mystery Tradition and Eastern Occultism. In conversations with Eric Dollard I have learned that the electrical waves correspond to the shapes of Tibetan ritual tools. It is my firm belief that the majority of people who look to the hidden side of life help maintain the unbalanced status of Mother Earth because they ignore a full half of the equation. As a tree has branches, so it has roots. It is near impossible to find any books on the Qabalah that cover the entire pattern of manifestation. Kenneth Grant, who wrote the above, has published at least six books covering the deeper aspects of the Qabalah and he has tied in the energies of the Tantrics of the Orient. Now look back two pages and read again the quote from Meade Layne.

FEAR

"Fear is the mind-killer. Fear is the little death which brings total obliteration. I will face my fear. I will allow it to pass over me and through me. And when fear has gone past, I will turn to face it's path. Where fear has gone there will be nothing. Only I will remain."

Litany for Fear from Dune by Frank Herbert

DINSHAH'S PLATFORM

"The Boundless Oscillatory Ocean Of Thought Is Essentially Universal And All-pervading; It Is The Individualized Monopoly Of NO Person And Is The Common Heritage Of Humanity's Evolution; Thus, What A Development Of Of Unrevealed Ages Has Given Unto Me In The Form Of Knowledge In My Present Incarnation Is No Distinctive Acquisition Of Mine For My Sole Use, Benefit Or Elevation, But Is All For Thee And Is Thine Without Condition, Without Obligation, Without Expectation. I Fear No One; Only God Above And Conscience Below And From Them I Have Nothing To Fear." Dinshah P. Ghadiali

CONTACTS

As a regular feature of CQC I am going to list various sources for information, books, products, etc. which I feel will be of interest to the membership. Feel free to enlighten me of further addresses to bring to our reader's attention. This is being done because we don't have the space to write up all of the various contacts we are dealing with. If you want to be listed send your name, address, products or projects, etc. This can be a great way to find fellow Borderlanders in your area. We can then grow into a large family of contacts.

Health Research; PO Box 70; Mokelumne Hill, CA 95245 - The best source around for hard to find alternate health books. A tremendous job has been done by them in getting over 1000 books into print!

Tesla Book Company; 1580 Magnolia Ave.; Millbrae, CA 94030. The one stop shop for all your Tesla needs. Mail order only. John Ratzlaff has spent the later part of his life referencing Tesla material and his work has enlightened many along the way.

Tesla Coil Builders Association; RD 3, Box 181; Glens Falls, NY 12801. Good networking newsletter for those into active research.

International Fortean Organization (INFO); PO Box 367; Arlington, VA 22210. Publishers of The INFO Journal keeping track of unusual and unexplained phenomena. Sample copy \$3.00.

Fortean Times; 96 Mansfield Road; London NW3 2HX, UK. Listing themselves as 'the Foremost Journal of Strange Phenomena.'

Delta Spectrum Research, INC.; 2100 Mediterranean Ave. Suite 16; Virginia Beach, Virginia 23451. Publishers of 'Sympathetic Vibratory Physics', dedicated to the work and discoveries of John Ernst Worrell Keely.

Threshold; 409 Santa Monica Blvd. #212; Santa Monica, CA 90401. Source for brain tuners, mood enhancers, out-of-body tapes. Write or call (213) 393-9405.

Rudolph Steiner Research Foundation; PO Box 1760 Redondo Beach, CA 90278. Dedicated to the preservation of the work of Rick Mansell, who is well known in anthroposophical circles. Rick Mansell established the Foundation in 1965. He dedicated the last thirty years of his latest incarnation to the translation of numerous Steiner lectures not previously available in English. Tapes of these lectures and the Foundation newsletter are available. For the serious student.

The SOL-Net Prosperity Newsletter; 207 Birch St. SE; Topeka, KS 66609. A twice-yearly networking newsletter for the Sanctuary of Light and former subscribers to the New Atlantean Journal. Good source of contacts.

FRY'S; 22511 Markham; Perris, CA 92370. Al Fry has put together a great source list of Borderland type books. He covers subjects from Tesla, intelligence increase, etc. to UFOs and Schauburger. Also available are video tapes on various subjects, for sale or rent.

Joseph Jochmans; 366 Kelton-Jennerville Rd.; West Grove, PA 19390. Publisher of the Meri Magi's CRYSTAL PLANETWORKS, a newsletter on the subject of earth grid research. Covers many angles, very good.

E.F. Skilling, Inc.; PO Box 61; Buhl, Idaho 83316. Best all around source for TENS type ELF instruments. Constant updating of products.

International Tesla Society, Inc.; PO Box 150; Colorado Springs, CO 80901. Sponsoring a Tesla Symposium this summer, July 30-August 3. Write for more details. Some of the best speakers in the field.

Fair Witness Project, Inc.; 4219 W. Olive St.; Suite 247; Burbank, CA 91505. Publishers of FOCUS, edited by William L. Moore, a monthly newsletter directing inquiries into paranormal events, UFOs, etc.

Mutual UFO Network; 103 Oldtowne Rd; Seguin, Texas 78155. Publishers of the MUFON Journal, a perusal of current UFO research.

The National Health Federation; 212 West Foothill Blvd.; Monrovia, California 91016. Everyone should support this fine organization battling for everyone's freedom to choose their own method of health care. Publishers of Health Freedom News.

Bruce Copen; Highfield Dane Hill; Haywards Heath, Sussex RH17 7EX; U.K. Comprehensive catalog of radionic equipment. Catalog \$2.00

Cancer Control Society; 2043 N. Berendo St.; Los Angeles, CA 90027. Books, movies, conventions, clinic directory. Prevention is the best method, these people can supply you with good information.

Pyramid Research Center; Casilla 445; Pucallpa, Peru. Newsletter, \$12.00 US funds, large number of study folios, active project with pyramid greenhouse, geodesic dome, unusual agricultural advances, mental and physical development, non-conventional energy, etc.

Coalition for Alternatives in Nutrition and Healthcare (CANAH); PO Box B-12; Richlandtown, PA 18955. Non-profit, grass-roots coalition, established to educate the public in nutrition and alternative health-care. Publications, public awareness presentations, lobbying and membership.

We hope that this section will be of some service to our members. Be sure to let them know where you saw their address. Maybe they'll give us a mention and help spread our word.

"SCIENCE CORNER"

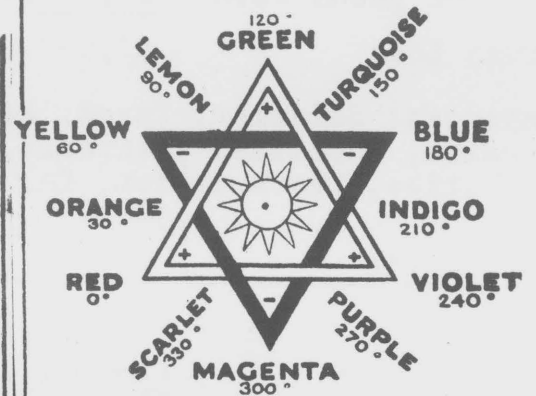
COMPILED AND EDITED
BY SAROSH "NICK" DINSHAH GHADIALI

THE ELECTRO-MAGNETIC SPECTRUM - in Octave and Powers-of-Ten format
(Covering Sound, Radio, Micro-Waves, Television, Infra-Red, Visible Spectrum, Ultra-Violet, X-Rays, Gamma-Rays, Delta Rays, Magnetism and Cosmic Rays).

(C) COPYRIGHT 1986 - DINSHAH EDUCATION SERVICE

(FOR MORE PARTICULARS WRITE: NICK'S ENTERPRISES, 811 ST. LOUIS, FERNDALE MI 48220)

MATHEMATICAL AND GEOMETRIC PRECISION-
BROUGHT TO THE HEALING ART BY DINSHAH



Reprinted with permission.

Sarosh "Nick" Dinshah Ghadiali, Fifth son of Col. Dinshah Ghadiali, called to say how pleased he was with the response from BSRF members. There is quite a bit of interest in using God's Rainbow to bring harmony into our lives.

I have been reading the three-volume color encyclopedia by Col. Dinshah and find it a great lesson plan. It should be required reading in high-school physics class. The 3-volume set is available for Nick for \$45.00 postpaid. He also carries "The Compendium of Light and Color" (\$5.00pp) which is a perfect complement to the encyclopedia.

The chart printed to the left is from Nick's Natural Living featurette to the Ferndale News. Since most of our readers aren't vitally concerned with the local news of Ferndale, you can get the Nat. Living supplement for \$9.00 a year.

We will reprint the chart in the future with additions for ELF, Radionic waves, etc. Please send in any corresponding information to BSRF.

March-April 1986 JBR, Page 2

OCTAVE NUMBER	POWERS OF TEN	OSCILLATIONS PER SECOND	TYPE OF ENERGY IN FORWARD MOTION
SOUND	1	2	Lowest Inaudible Sound
		4	*(Battery/Commuted DC)
		8	Low Inaudible Sound
	10(1)	10	*Power Rotating Machinery (Low)
		16	Lowest Audible Sound
		32	C -3 Lowest Piano Range
		64	C -2 Lower Piano Range
		100	*Power Rotating Machinery (High)
		128	C -1 Low Piano Range
	10(2)	256	C Middle Piano Range
		512	C +1 Upper Middle Piano Range
		1,000	*Electronic Power Devices
	10(3)	1,024	C +2 High Piano Range
		2,048	C +3 Higher Piano Range
		4,096	C +4 Highest Piano Range
		8,192	Ultra-Musical Sound
		10,000	*Induction/Heating/Electronic Devices
		16,384	Entomonic (Insect) Buzz
	10(4)	32,768	Highest Audible Sound (Human)
65,536		Lowest Etherial Sound	
100,000		*Long-Wave Radio	
131,072		Low Etherial Sound	
262,144		Middle Etherial Sound	
524,288		High Etherial Sound	
10(5)	1,000,000	*Amplitude Modulation (AM Radio)	
	1,048,576	*Higher Etherial Sound	
	2,097,152	-U/C	
	4,194,304	-U/C	
	8,388,608	-U/C	
	10,000,000	*Short-Wave Radio	
10(6)	16,777,216	-U/C	
	33,554,432	-U/C	
	67,108,864	-U/C	
	100,000,000	*Interstellar Hydrogen T/V-F/M Radio (Frequency Modulation)	
	134,217,728	-U/C	
	268,435,456	-U/C	
10(7)	536,870,912	-U/C	
	1,000,000,000	*Radio Detecting and Ranging RADAR	
	1,073,741,824	-U/C	
	2,147,483,648	-U/C	
	4,294,967,296	-U/C	
	8,589,934,592	-U/C	
10(8)	10,000,000,000	*Microwaves-High Radar	
	17,179,869,184	-U/C	
	34,359,738,368	-U/C	
	68,719,476,736	-U/C	
	100,000,000,000	*Microwaves-Lowest	
	137,438,953,472	-U/C	
10(9)	274,877,906,944	-U/C	
	549,755,813,888	-U/C	
	1,000,000,000,000	*Farthest Infra-Red	
	1,099,511,627,776	-U/C	
	2,199,023,255,552	-U/C	
	4,398,046,511,104	Longest Photic Rays	
10(10)	8,796,093,022,208	Lowest Thermal (Heat) Rays	
	10,000,000,000,000	*Low Infra-Red	
	17,592,186,044,416	Low Thermal Rays	
	35,184,372,088,832	Invisible Light (Heat)	
	70,368,744,177,664	Most Destructive Infra-Red Rays	
	100,000,000,000,000	*Infra-Red Rays	
10(11)	140,737,488,355,328	Mild Infra-Red Rays	
	281,474,976,710,656	Mildest Infra-Red Rays	
	Averaged 562,949,953,421,312	(In)Visible Light-Color	
	Color Wave Length	Angstroms	
	Red	37,000	7,000
	Orange	40,125	6,500
Yellow	43,250	6,000	
10(12)	Lemon	46,375(A)	5,750
	Green	49,500(B)	5,500
	Turquoise	52,650(C)	5,250
	Blue	55,750	5,000
	Indigo	58,875	4,500
	Violet	62,000	4,000
10(13)	Purple	65,125	-
	Magenta	68,250	-
	Scarlet	71,375	-
	1,000,000,000,000,000	*Visible Spectrum	
	1,125,899,906,842,624	1st Invisible Light	
	2,251,799,813,685,248	2nd Invisible Light	
10(14)	4,503,599,627,370,496	3rd Invisible Light	
	9,007,199,254,740,992	4th Invisible Light	
	10,000,000,000,000,000	-U/C	
	18,014,398,509,481,984	5th Invisible Light	
	36,028,797,018,963,968	Shortest Photic Rays	
	72,057,594,037,927,936	Destructive Ultra-Violet Rays	
10(15)	100,000,000,000,000,000	*Ultra-Violet Rays	
	144,115,188,075,855,872	Softest X-Rays	
	288,230,376,151,711,744	Soft X-Rays	
	576,460,752,303,423,488	Hard X-Rays	
	1,000,000,000,000,000,000	*X-Rays	
	1,152,921,504,606,846,976	Hardest X-Rays	
10(16)	2,305,843,009,213,693,952	Radium Emanation	
	4,611,686,018,427,387,904	Gamma Rays	
	9,223,372,036,854,775,808	Delta Rays	
	10,000,000,000,000,000,000	-U/C	
	18,446,744,073,709,551,616	Magnetism	
	36,893,488,147,419,103,232	-U/C	
10(17)	73,786,976,294,838,206,464	-U/C	
	100,000,000,000,000,000,000	*Cosmic Energy (High)	

LEGEND: * = International Classifications
+ = Unclassified

1985 ANNUAL REPORT

Receipts from Book Sales, Mem-
berships, Donations \$20,945.65
Cost of goods sold \$28,905.48

Gross Loss \$7,959.83

Expenses: Salaries, Taxes, Rent,
Repairs, Supplies, Insurance,
Utilities, Depreciation, Car
\$17,793.41

Net Profit 0

Balance Sheet, End of 1985

Current Assets:

Cash on Hand \$753.03
Inventory \$3381.70 \$4134.73

Fixed Assets:

Equipment and
Furniture \$2113.72
Ref. Library \$5850.00 \$7,963.72

Total Assets \$12,098.45

Current Liabilities

Notes Payable \$1226.00
Accounts Payable
Accrued Rent \$18,111.00
Accrued Sal. \$111,160.00
 $\frac{1}{2}$ of 420 un-
fulfilled Subs \$3,195.00
Total Liabilities \$133,692.00

THE JOURNAL OF BORDERLAND RESEARCH

A Publication of:

BORDERLAND SCIENCES
RESEARCH FOUNDATION
P.O. Box 549,
Vista, California
USA 92083-0190

FWD & RET Postage
Guaranteed - ACR

BULK RATE
U. S. POSTAGE
PAID
VISTA, CALIF.
PERMIT NO. 42